

OLICANA MUSEUM & HISTORICAL SOCIETY

NEWSPAPER CUTTINGS OF LOCAL HISTORICAL
INTEREST

VOL XV JAN 1981 - SEP 1981

G-16

1/2

REVIEW OF THE YEAR FOR ILKLEY DISTRICT

(1980)

2 JAN 1981

GENERAL NEWS

January

One of Ilkley's longest established children's playgroups, The Grove Playgroup, was forced to close down after ten years because of lack of accommodation.

Ilkley Chamber of Trade organised a petition supporting Ilkley Parish Council's mounting campaign to squash proposals for a Co-operative departmental store in the centre of the town.

Ilkley Parish Councillors with their husbands and wives enjoyed their third annual dinner at an Ilkley restaurant.

A special school train service taking children from Ben Rhydding to Ilkley came into operation in order to reduce requirements for school buses. The West Yorkshire Passenger Transport Executive said the marginal cost of providing the special train reflected a considerable saving over the cost of providing a school bus.

Work progressed on a scheme to transform an area of land near the Old School, Main Street, Addingham, into an attractively landscaped public garden.

Fears for the future of Addingham Gaia were expressed at a meeting of Addingham Parish Council, when concern over a lack of support for the organising committee was outlined.

February

Two members of Ilkley and District Motor Club, Gary News and Malcolm Smithson finished as class winners and third overall in the "Joe Goodwin" motor rally.

Eighteen trees in Ilkley's town centre were cut down as part of a phased programme of work carried out by West Yorkshire County Council and Bradford Metropolitan Council to replace the trees in Brook Street and along The Grove.

A twenty-seven year-old woman died and a mother and six day-old baby were injured when the mini car in which they were travelling was involved in a collision at Manor Park, Burley.

A controversial proposal to build a £70,000 dam across Marchup Beck, Addingham, received the approval of a parish meeting in the village.

A resident at Heather Court, Menston, Mrs. Elizabeth West, celebrated her 101st birthday.

Work progressed on supplying Addingham Cricket Club with water mains pipes and electricity, for the first time since they were elected to the Aire and Wharfedale League forty years ago.

Ilkley professional photographer Richard Beckwith, of Leeds Road, was awarded the national title in the Kodak Bride of the Year Competition, 1979, at a presentation in London.

March

Ilkley artist Leslie Simposon and his son, Nigel, held a joint exhibition of their paintings at the Victoria Gallery, Harrogate.

Burley Ladies' Circle staged their first fashion show and raised £180 for St. Gemma's Hospice, Leeds, a nursing home caring for people suffering from serious illnesses.

Ilkley's second, Abbeyfield House, in Riddings Road, was officially opened by Cr. Mrs. M. Renton.

A report on the conditions applying to the operation of Ilkley Abattoir was sought by Ilkley Parish Councillors following many complaints about the number of cattle being slaughtered there.

Bolton Abbey's new £64,000 village hall was officially opened by the Duke of Devonshire, who congratulated everyone on a fantastic achievement.

April

A couple, Mr. and Mrs. A. Beecroft, who spent their honeymoon at the Cow and Calf Hotel, Ilkley, 39 years ago during the black-out of World War Two, enjoyed another stay there free of charge.

Seven Guides from the 2nd Ilkley Company took part in a 'Great Britain Swim-around' with David Wilkie, when sponsored swims were held at various centres throughout the country to raise money for the National Children's Home.

A one and a half day furniture and fine art sale by Dacre, Son & Hartley at their Ilkley salerooms, raised a total of £42,000.

Warm, dry sunny weather gave Ilkley one of its busiest Easter holidays for a number of years. The moors were packed with visitors and at times traffic stretched a mile back from the traffic lights in the town centre.

A survey, published by the Transport and Road Research Laboratory, revealed Bolton Abbey as the most popular place for visitors to the Yorkshire Dales, most of whom came from Leeds and Bradford.

An inscribed silver tray was presented to Addingham Parish Councillor, James Hadley, to mark his 40 years as a member of the council.

May

Mr. Charles Bainbridge, who trained and conducted the Ilkley Choral Society since he formed it in 1948, retired. The society is now a flourishing one with over 100 members.

Claytons, the Ilkley butchers, were awarded first prize in the Speciality Section of the National Sausage Competition at the National Meat Traders Fair at Brighton, another in a long string of awards and prizes for their famous pork sausages.

The town of Ilkley took on a carnival atmosphere on Bank Holiday Monday afternoon for the Centenary cricket match, Black Hats versus White Hats. The event, or-

ganised by the Ilkley and District Chamber of Trade, was a resounding success.

The Ilkley office of Bradford Metropolitan Social Services Department was officially closed down.

The seven day Wharfedale Music Festival provided good competition and achieved some remarkably high standards, with plenty of promising young performers.

The heatwave experienced during the earlier part of May failed to last until the Bank Holiday weekend, with cloud replacing the bright sunshine.

June

A hosepipe ban on watering private gardens or washing cars in the Ilkley district was imposed, due to virtually no rainfall in the preceding nine weeks.

An Ilkley mother of two, Mrs. Christine Dance, returned home, to Sunset Drive, to find her semi-detached home ablaze. The fire gutted nearly all the rooms.

Criticism was made of the use of Ilkley's central car park for a display of Opel cars, the second time in just over a year that complaints have been received about the use of the car park for trade exhibitions.

Prospecting for oil in the Ilkley and Addingham areas was given Government approval.

July

St. John's Church, Ben Rhydding, held one of their most important events in a year of celebrations to mark the 75th anniversary of the church—a garden party.

Members of the "La Volante" Folklorique Group, of Coutances, visited Ilkley as guests of the Ilkley Scottish Country Dance Club.

Model railway enthusiasts gathered at Ilkley to stage the annual summer show, organised by the Yorkshire Dales Railway Trust, in the Kings Hall and Winter Gardens.

After doubts about its future earlier in the year, Addingham's annual gala proved as successful as ever in dry and sunny conditions.

Planning permission was given for a Co-operative departmental store and a motor cycle showroom on the controversial site on Ilkley's central car park.

Nearly 2,000 people visited Roadwheels '80—the Ilkley Car and Bike Show, staged by local car and motorcycle dealers to raise money for Childsplay. Over £500 was raised.

August

Parents, friends, teachers and present and former pupils enjoyed an afternoon of entertainment at a garden party held to mark the 50th birthday of Moorfield School, Ilkley.

Extensive damage was caused to the Calvary at the entrance to the Monastery of the Passionist Fathers, at Middleton Lodge, Ilkley, during a fierce storm.

Victors from Holland, Denmark, U.S.A., Italy and Australia were among the 550 entries for Ilkley Lawn Tennis Club's 84th annual tournament.

About 300 students took part in the sixth residential ballet seminar at Ilkley College.

A successful year at Ghyll Royd School, Ilkley, was outlined by Headmaster, Mr. Leslie Moorhouse, at the school's end of term service.

A list of suggestions aimed at improving road safety in Addingham was drawn up by the village's Civic Society.

Six people were hurt when two cars were involved in a head on collision in Main Street, Addingham.

Ilkley enjoyed a warm, dry Bank Holiday period, with almost 12 hours of bright sunshine on the Sunday and nine hours on Monday. Temperatures reached 19 degrees centigrade.

The 27th Ilkley Flower Show produced a high standard of exhibits, although the weather affected the number of entries in some classes.

September

A parish survey launched to establish the views of residents on proposals for the redevelopment of land adjoining Ilkley's central car park was unique to Ilkley.

A jubilee booklet was published to mark the 75th anniversary of the founding of St. John's Church, Ben Rhydding.

The Cow and Calf Hotel, on the edge of Ilkley Moor, was sold by private treaty by Dacre, Son & Hartley, Estate Agents, of Ilkley.

A new test bakery for their Food Machinery Division was opened by Spooner Industries Ltd., at their works in Railway Road, Ilkley.

Despite the poor gardening season, the previous high standards were maintained at the eighth annual vegetable and flower show held by Addingham Allotments and Gardens Association at the Memorial Hall.

With construction work on the Nell Bank Training Centre built as part of Bradford's Queen's Silver Jubilee project, completed, the keys were officially handed over to the Trustees of the centre.

No one was hurt when an explosion wrecked part of an unmanned electricity substation at Ilkley, cutting off power supplies to the town for several hours.

Former pupils of Ben Rhydding Secondary Moern School 25 years ago held a re-union at the Craiglunds Hotel, Ilkley.

October

An ambitious £300,000 appeal was launched to save the 800 years old Priory Church at Bolton Abbey, falling victim to the ravages of weather and the stress of old age.

Heavily rated Ilkley traders gained support in their campaign to drive out of the town one day and two day trade sales.

A call for the shelter at the bottom of Mill Ghyll, Ilkley, to be removed as it is "now becoming a teenage vice centre" was received in a survey conducted by Ilkley Parish Council.

Members of Addingham Civic Society organised a second clean-up of the village beck as a follow-up to an earlier campaign which removed tons of long-immersed rubbish.

"The Green Frog" restaurant opened after conversions of rooms at Ilkley Railway Station were completed.

About 300 people were entertained with a mixture of music movement and materials at the Ilkley and District Ladies Circle's "Welcome Winter" fashion show, at the Craiglunds Hotel, Ilkley.

The offices of Wharfe Valley Engineering Services Ltd., Brook Street, Ilkley, and Greenwood's men's outfitters shop immediately below the office were badly affected by fire.

Torrential rain caused severe flooding in the Ilkley area, with one of the worst hit areas being the grounds of Ilkley Lawn Tennis Club, where flood water reached depths of nearly four feet as the River Wharfe burst its banks.

The Conservative majority of 3,000 in 1977 was out to 340 in the County Council by-election, in which Liberals were second with 1,677 votes.

November

Ilkley Rotary Club held their 43rd Charter Anniversary dinner at the Craiglunds Hotel, Ilkley.

All ten representatives appointed by Ilkley Parish Council to serve on Governing Bodies of local Voluntary Schools were sacked by Bradford Metropolitan Council.

Lady Hill opened the new James Hill travel agency in Brook Street, Ilkley, sparking off complaints from local councillors and residents about the brightness of the illuminated sign.

For the first time in many years, Church Street, Ilkley, was closed to traffic while resurfacing work was carried out.

An appeal for at least £20,000 for the restoration of its organ was launched by St. Margaret's Church, Ilkley.

Ilkley Chamber of Trade appealed for money to help provide decorative street lighting for Ilkley at Christmas.

December

A total of £480 was raised at poppy collections and money-raising events in Menston, while Burley's collection broke last year's record of £702.

A party of crew members from Ilkley's adopted submarine, H.M.S. 'Osiris', arrived in Ilkley for their annual pre-Christmas visit.

Plans to extend the Civic Cinema, which got off to a successful start when it was launched in March, 1978, were put forward by Bradford Metropolitan Council.

£400 was raised for the N.S.P.C.C. at a charity auction held by Andrew Sharpe and Partners at their Ilkley Galleries.

Father Christmas toured the area on a brightly lighted float to the amplified sound of carols and seasonal music, by courtesy of Ilkley Round

Table, who enjoyed providing the excitement for local children and at the same time arranged a collection towards Christmas parcels for needy old folk.

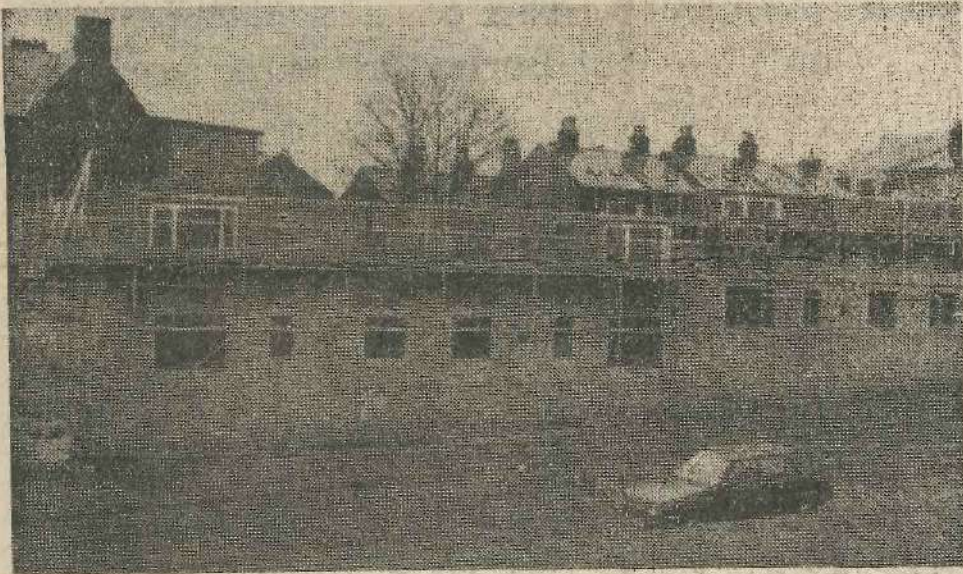
Ilkley Choral Society gave their annual performance of "Messiah", under the baton of their new conductor, Marcus Huxley.

An Ilkley firm, Quarby Construction Co. Ltd., of Howbar Hill, Langbar, won a major contract for extensions to Silcoates School, Wakefield.

A loss of £3,400 over the year was reported at the annual meeting of Ilkley British Legion by Treasurer Mr. S. Dixon.

At the annual meeting of Ilkley Cricket Club, the Treasurer, Mr. R. P. Bott, reported that despite an increase in expenditure incurred by work on the new dressing rooms and the clubhouse, the club was still in a healthy financial position.

New Development Of Flats At Ilkley



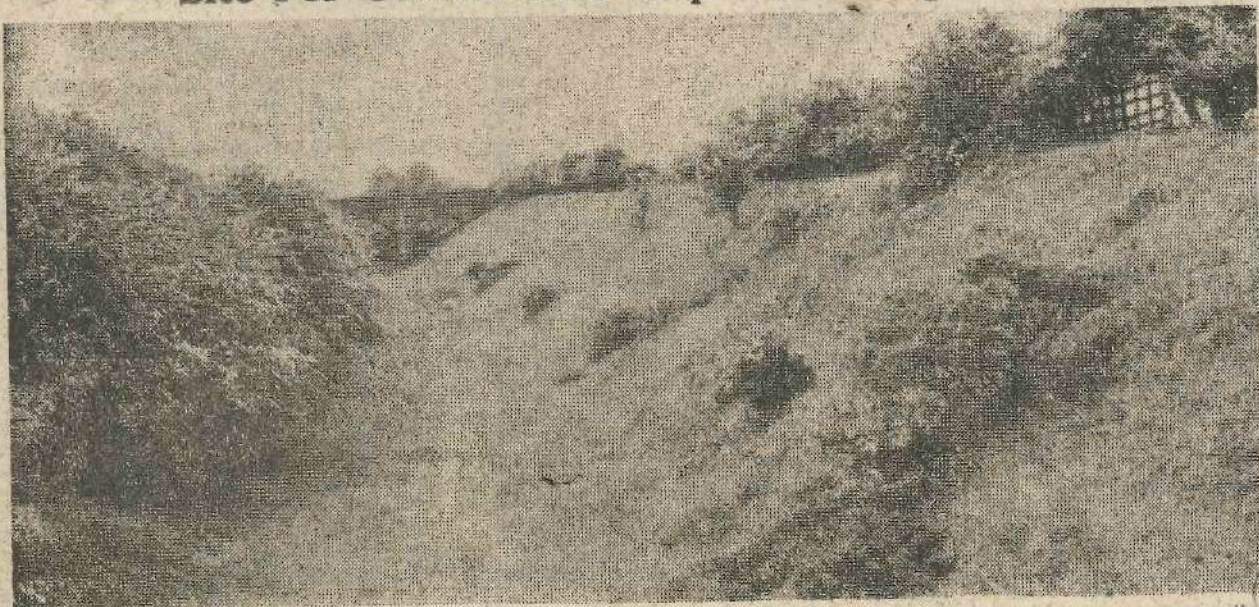
Building of a new development of seventeen two-bedroomed flats began on land at the junction of Castle Road and New Brook Street, Ilkley. Picture by Richard Beckwith, Ilkley.

Improvements Sought For Corner Of Burley



Ilkley Parish Council sought improvements to the triangle of land near the junction of Station Road and Main Street, Burley, which it was felt could be tidied up without too much cost. Picture by Philip Bambridge, Addingham.

Site For Controversial Tip At Addingham



The former railway cutting off Stockinger Lane, Addingham, which was the site put forward by the county council for tipping of domestic, commercial and industrial waste — plans which caused a storm of protest in the village. Picture by Philip Bambridge, Addingham.

Moorland Bridleway Comes Into Use

Selection Of

Pictures

From 1980

2 JAN 1981



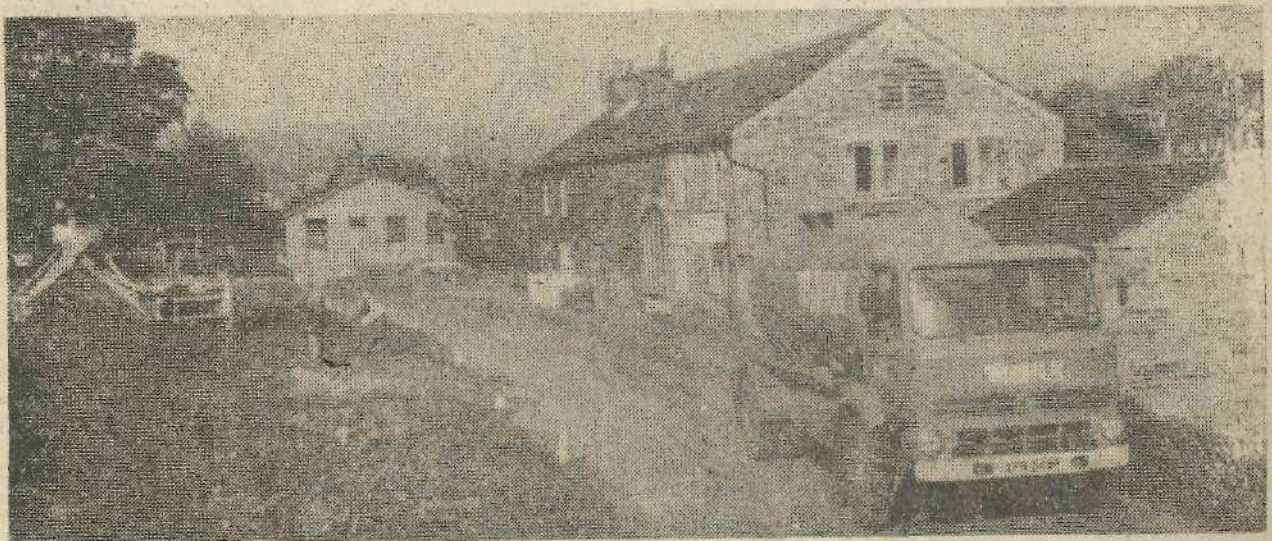
Young horse riders were able to take advantage of the new bridle way across Ilkley Moor, which officially opened at Easter for a trial period of twelve months. Picture by Richard Beckwith, Ilkley.

Ilkley Deputation Given "Brush-Off" At Bradford



A deputation of Ilkley Parish Councillors who took the results of a survey they had carried out to Bradford were given the "brush-off" at City Hall. Their survey concerned controversial plans for a departmental store on land next to Ilkley's central car park.

Major Improvement Scheme At Addingham



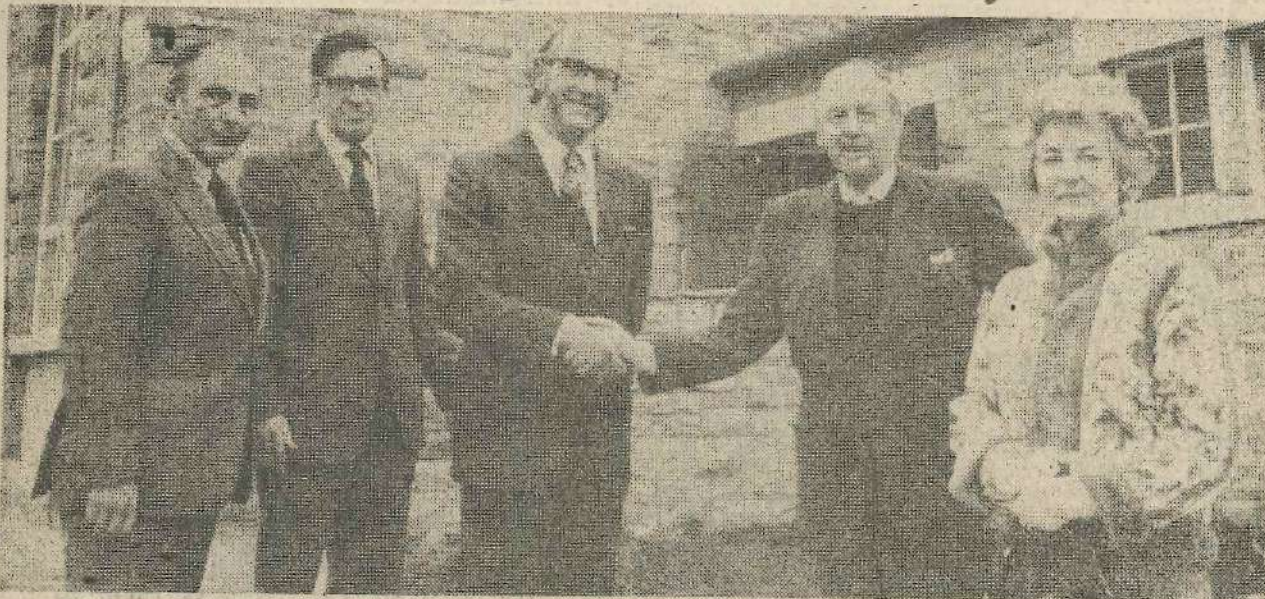
Accommodation works in preparation for a major improvement scheme at Church Street, Addingham, got under way in October. They included pulling down walls and rebuilding them further back in preparation for widening and re-alignment of the road. The main scheme will be completed in two phases. Picture by Philip Bambridge, Addingham.

Trees Replaced To Maintain Ilkley's Attraction



Eighteen trees in Ilkley town centre were cut down as part of a phased programme of work by the county council. The trees, eight in Brook Street and ten on The Grove, were replaced with similar type trees more suited to their situation. Picture by Philip Bambridge, Addingham.

New Village Hall At Bolton Abbey



Bolton Abbey's new £64,000 village hall was officially opened by the Duke of Devonshire at a special reception in March. The Duke had instigated the fund raising scheme, had taken part in a sponsored walk and given a generous donation. Picture by Philip Bambridge, Addingham.

New Public Garden At Addingham



An area of land next to the Old School at Addingham was transformed into an attractive public garden after the Parish Council obtained a 99 year lease from its owner. Picture by Philip Bambridge, Addingham.

Explosion At Electricity Sub-Station



No-one was hurt when an explosion wrecked part of an unmanned electricity sub-station at Easby Drive, Ilkley, causing damage estimated at £15,000. It was believed to have been caused by an overhead cable fault and cut off power supplies to the town for several hours. Picture by Richard Beckwith, Ilkley.

E N D S

BROOK STREET STREAM EXPOSED DURING REPAIRS TO CULVERT

2 JAN 1981

Repair and reinforcement work on the surface-water culvert, in Brook Street, Ilkley, between the junction with Railway Road and the junction with The Grove, is now about half-way towards completion.

The West Yorkshire Metropolitan County Council began work on the culvert which is about 100 years old, early in November. It should be completed

by February.

The Council says the cost of the work is not known, as it forms part of a block amount being spent on highway repairs.

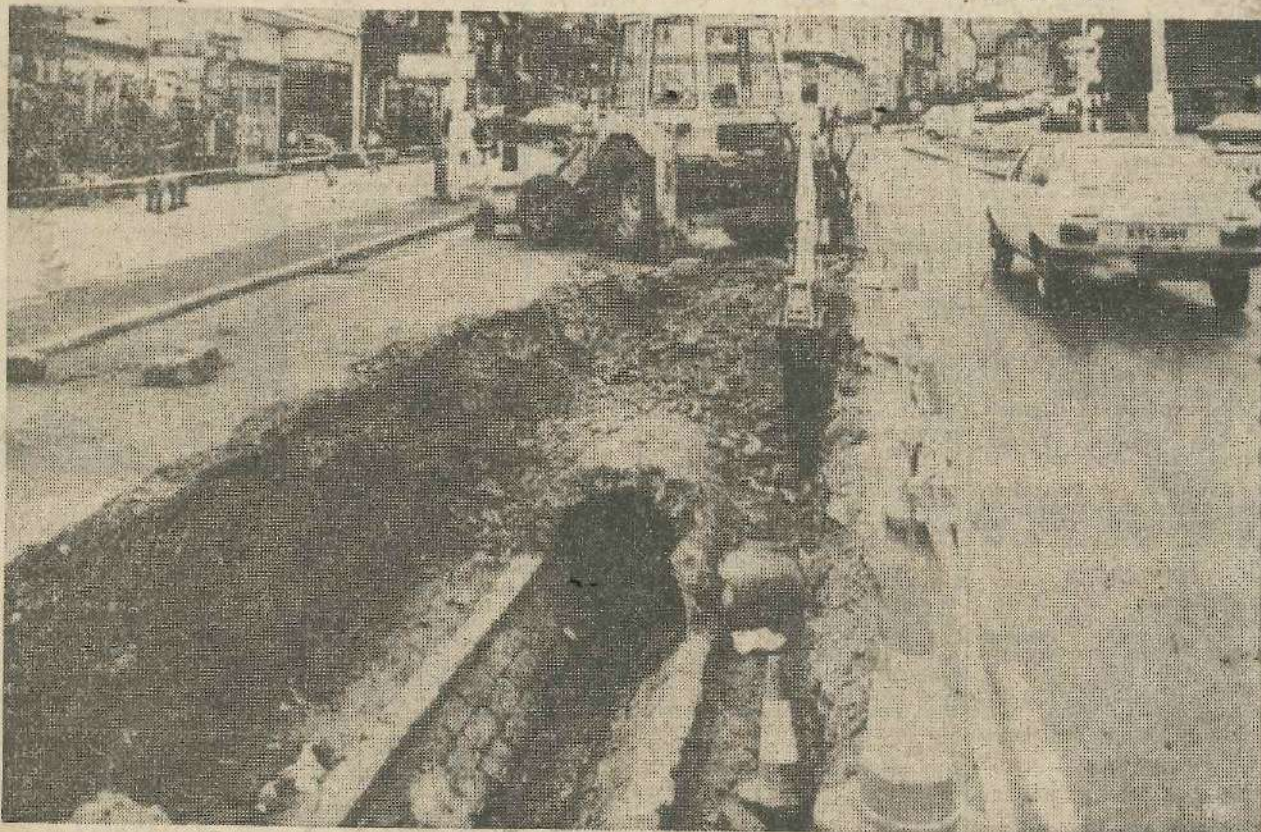
During the last century when the stream ran openly down Brook Street between a carriage bridge at the top of Brook Street and the Wharfedale Inn at the bottom the sides of the stream for nearly one half the way

down were steep grassy slopes. In summer the slopes were full of wild flowers.

There was a footbridge across the stream and this consisted of two massive slabs of stone, the ends of which rested on a rough pier in the centre of the stream. As there was no protection on the sides, the old folk's lanterns on dark and stormy nights did not always prevent them from falling

off. On one occasion a man subject to fits fell into the stream and was drowned.

At one point the stream was crossed by stepping stones and where the Crescent Hotel now stands there was a footbridge similar to the one above. There was a footpath of irregular width and character on the east side of the stream, the carriage way being on the western side.



PLANNING DECISIONS AFFECTING ILKLEY'S FUTURE TO BE TAKEN DURING NEW YEAR

ON SUMMER EXPEDITION TO ICELAND

Robert Andrews (17½) of Wens Walk, Ilkley, has been selected from over 300 applicants from Sixth Forms throughout the country to join a party of 60 for the British Schools Exploratory Society's expedition to Central Iceland in the summer of 1981.



Each member of the expedition has been given responsibility for raising the £850 necessary to cover his expenses, so Robert will be approaching local businessmen and travel and educational trusts hoping to gain sponsorship for the project, which is being organised under the auspices of the Royal Geographical Society. A genuine and important programme of geological and botanical research will be conducted, and most of the work will be done while camping on glaciers at high altitude near the Arctic circle. Robert, who attends Warwick Boarding School came to Ilkley with his family from the Midlands five years ago, and hopes to make a career in the Army. 2 JAN 1981

The New Year for Ilkley holds promises of another eventful and interesting period when the controversy over the siting of the proposed Co-operative Store will be settled and planning decisions taken on the redevelopment of the railway goods yard.

The past year has been a memorable one, says Ilkley Parish Council's Chairman, Cr. Kenneth G. Johnson who, in his New Year's Message, wishes all residents of Ilkley, Burley and Menston a happy and hopefully more prosperous year in 1981.

Looking back over the past year Cr. Johnson says it was remarkable how eventful it had been.

"Within two days of being elected Chairman, my wife and I were on our way to Coutances, France, on the civic visit along with eight representatives of other Ilkley organisations. We shared the experiences of the journey by mini-bus and the wonderful friendly and warm reception from the people of Coutances.

"I am sure that the continuation of these exchange visits with our twin town brings rich rewards in the promotion of contacts with groups and individuals from both towns," says Cr. Johnson.

Changed Attitudes

"Shortly after our return, the District Council elections were held with the result that political control of the Bradford Metropolitan District Council changed hands. This resulted in changed attitudes and relationships throughout the whole spectrum of local government in our area.

"Following fairly soon on the heels of these events, we had the abandonment of the formal Town Centre Plan for Ilkley and in its place an 'ad hoc' less specific policy. Further, we had the matter of the planning application by the Co-operative Society for a store on land adjoining the central car park and the insistence of Bradford Metropolitan District Council that this was desirable against much well voiced local opinion. A Parish Survey was carried out with the help of many dedicated people which showed an overwhelming vote against the Co-op or any store on that site and the result was presented to Bradford Council by a delegation at Civic Hall," says Cr. Johnson.

"Some of the energy and frustration from this event was carried over to a meeting held for the public by some local traders in October to give vent to local feelings about the Traffic Management Scheme. Unfortunately, the opportunity to harness some of the energy was lost but the attendance illustrated the depth of feeling at the time.

Pleasant Occasions

"There have been many and pleasant occasions during the year which included hospitality from the Soroptimists, Business and Professional Women, the Lord Mayor of Bradford, the Ilkley Flower Show and the Sound of Music, to mention a few," says Cr. Johnson.

"At very short notice, we had a visit from ten members of the crew of H.M. Submarine 'Osiris' during December, an association which goes back to the days of the Second World War.

"The sad events of the year were the deaths of Mr. Bertram Townend, for many years Town Clerk of the former Ilkley Urban District Council, and also of Mrs. Forrest, wife of Cr. Walter Forrest.

"The New Year holds promise of continuing activities and interest. Unfortunately, our Parish Clerk, Mrs. P. Fisher, has found the joint pressures of family commitments and parish affairs too great to be able to continue and we are to lose her excellent services at the end of January.

Traffic Scheme

"The implementation of the Traffic Management Scheme can not be much longer delayed and it will be interesting to see the effects of increased pressure on available car parking space together with the introduction of parking charges in the central car park.

"A public inquiry is to be held into the planning application for the Co-operative Store on the car park site. This will involve the Parish Council in finding ways and means of being properly represented and of raising sufficient funds to cover the expense of engaging counsel," says Cr. Johnson.

"Tourism is going to play a greater part in the life of Ilkley and we are the first town in the district to have a new Tourist Enquiry Office, an acknowledgement of our singular importance to the district in this respect.

"The future development of the railway goods yard site is also going to be a very important topic for discussion and decision. Relations between the Parish Council and the Bradford Metropolitan District Council can only improve from the low point reached in 1980. Let us hope we can look forward to better things in 1981," says Cr. Johnson.

ACROSS THE YEARS 2 JAN 1981

RIVER FREEZES AFTER SEVERE FROST

100 Years Ago

Severe temperatures were reported in the district over the period following Christmas — there were 21 degrees of frost with a light sprinkling of snow. This meant a number of people were able to take advantage of skating on the tarn. Even the river was frozen over from Burley to Otley and above the old bridge towards Addingham.

There was a large attendance at the annual soiree at the Grove schoolroom of the Congregational Mutual Improvement Society. The schoolroom was attractively draped with scarlet hangings with illuminated shields on the walls, and the refreshments were beautifully set out and occupied the whole of one side of the room. The programme consisted of music, songs and recitations.

75 Years Ago

Looking at 1905 in retrospect, it was said to have been a remarkable year locally in more than one respect. The year had seen the completion of Brook Street, the demolition of the Star and Wharfedale Hotels and the erection of the new bridge across the river, a start made on the new Public buildings, the erection of the chancel and nave at Ben Rhydding Church, and the construction of walks and promenades around the bandstand in West View Park, as well as the murder of a woman in service in the town.

Following an unusually mild spell of weather, the New Year opened more seasonably with frost. New Year's Day was a bright, frosty day with many townspeople taking advantage of the weather.

The annual entertainment for children given by members of the Ilkley Constitutional Club took place at St. Margaret's Hall. Three or four hundred children assembled to enjoy a

programme of conjuring, ventriloquism, gramophone selections and comic lantern slides which were manipulated by Mr. F. Bontoft, and the gramophone by Mr. J. H. Bryant. The children were each given an orange at the close.

50 Years Ago

Skating was in full swing on Ilkley Tarn after a week of keen frosts. The council employees trimmed and swept the ice, and the electricity department laid a temporary cable across the moors from the main in Cowpasture Road and from two high poles the tarn was illuminated brightly. There was an enormous crowd in the evenings, and motorists visited from all parts of the West Riding.

A suggestion to place an altar in each of the cemetery chapels led to much discussion at the meeting of Ilkley Urban District Council. Many members thought there were more pressing matters to be attended to, whilst others thought the provision of altars should have high priority. In the end it was decided to ask for estimates for an altar to be provided in the Church of England chapel only and this was carried by five votes to three.

Complaints were made at this meeting regarding mischievous hobbledoys in the town who threw seats and boulders into the local streams and into Middleton Woods. The public were asked to assist by reporting all acts of vandalism.

25 Years Ago

Apart from a few traces of snow remaining on the hilltops from the heavy snowfalls before Christmas, Christmas Day proved to be the mildest for many years.

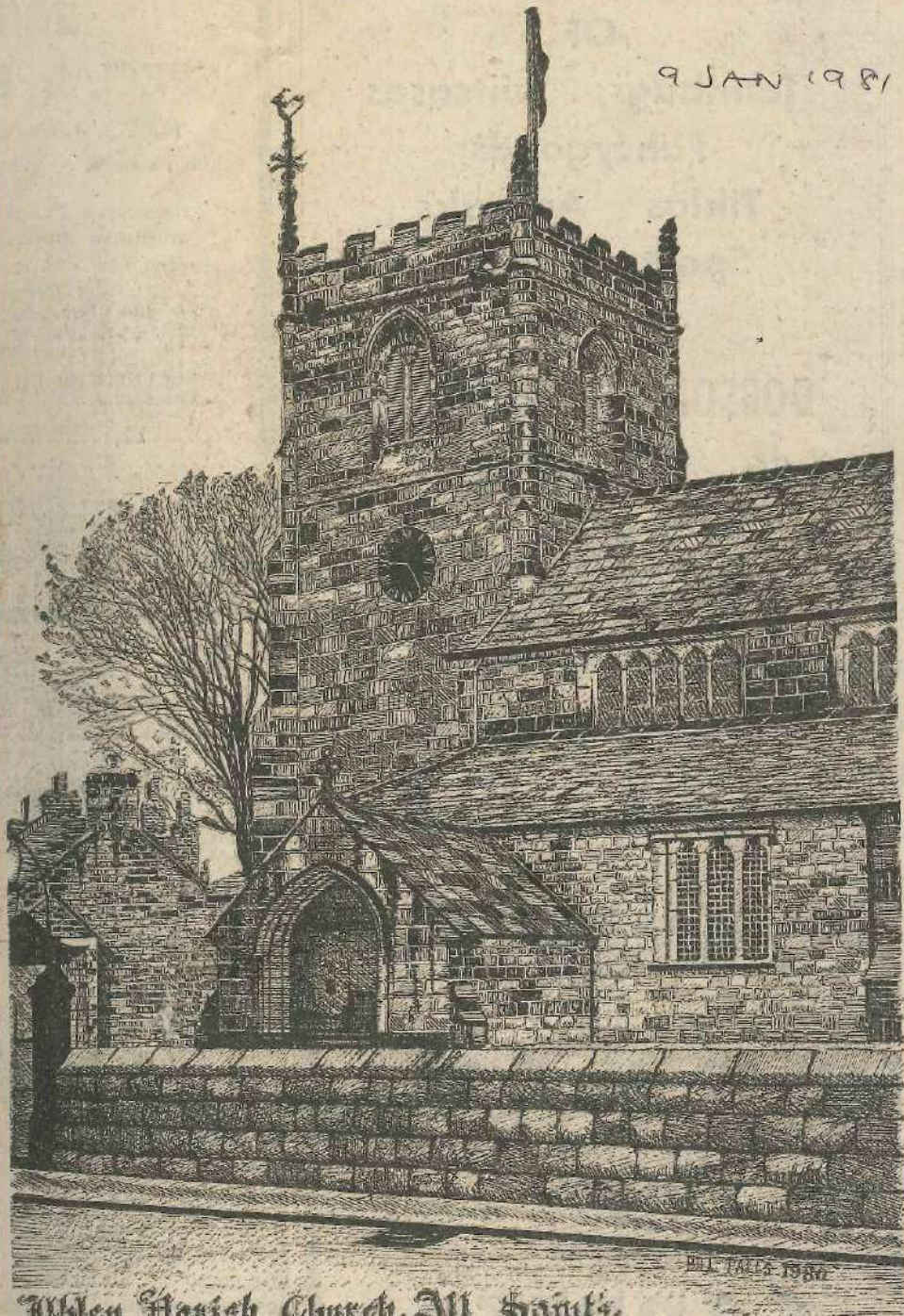
Ilkley Churches reported large congregations for their Christmas services and the festival of the Nine Lessons and Carols was held in the Ilkley Congregational Church with the choir conducted by Miss A. A. Babidge. A patient in the Coronation Hospital over Christmas paid tribute to the staff who had helped to make her Christmas a very happy time. Hotels were fully booked over the entire period and had a full programme of dinner dances for the New Year.

Spooner Dryer and Engineering Co. Ltd. whose works were in Railway Road had had their most successful year to date. This was reported by Mr. N. Scrouther, a director of the firm, at the 10th annual staff dinner at Craiglands Hotel. Guests of honour included the Chairman of Ilkley Council, Mr. W. Hill, and Mrs. Hill. Mr. W. Spooner, managing director, was presented with a television set as a token of appreciation of the fact that the firm's prosperity had had its

place of
its attr
looking
has a
history
his bo
Church
church,
have be
in the
there
this ear
built, of
nothing
happen
the onl
features
building
was t
which l
thirteen
At so
the fou
present
were b
fifteen
built, o
built.
In t
Mr. H.
Yorkshi
lived in
the Pa
opened
restorat
It wa
that t
Church
been so
been so
it was
the pa
church
this p
worn f
and wa
gested
ground
what i
Crown
suppos
When
tion" t
was co

Ilkley Parish Church Has Long And Interesting History

9 JAN 1981



Ilkley Parish Church, All Saints.

Part of the site of the Roman Fort at Ilkley as for centuries been a place of worship.

Its attractive setting overlooking the River Wharfe has a long and interesting history. John Le Patourel in his booklet "Ilkley Parish Church" available at the church, says there must have been a church in Ilkley in the eighth century and there were indications that this early church was in fact built of stone. There was nothing to suggest what happened to this church and the only early architectural features in the present building that could be dated was the south doorway which belonged to the early thirteenth century.

At some date, possibly in the fourteenth century, the present arcades of the nave were built and during the fifteenth century the tower was built, or more probably rebuilt.

In more modern times Mr. H. N. McCall, a noted Yorkshire archaeologist who lived in Ilkley, recorded that the Parish Church was reopened in 1861 after "drastic restoration."

It was interesting to note that the church wall in Church Street had never been so near to the church as it was after that restoration. The pavement outside the church human remains when this pavement became too worn for safety in the 1930's and was replaced. This suggested that the church burial ground was much nearer to what is now the Rose and Crown Hotel than generally supposed.

When the "drastic restoration" took place in 1860 and was completed the following

year the nave and aisles of by 16 feet with an additional the church were lengthened bay being added. The chancel, which may have been very much as all now see it, was taken down and re-built. The work took ten months, and cost £1,300, but before the day of the re-opening on 6 May, 1861, the whole of the cost had been raised.

A stained glass window in memory of Mr. B. B. Popplewell, of Beamsley was inserted in the West end of the edifice in 1874, and four years later another stained glass window was inserted in the window overlooking the font, in memory of the Rev. John Snowden, Vicar of Ilkley for 36 years.

A further restoration took place in 1880. Formerly the walls were decorated with scroll work and passages of script work. The plaster was removed from the walls and roof and the stone was pointed. New clerestory windows were introduced on the North side, and the lighting and heating of the building was improved. A new vestry was subsequently added, bringing the church building to the point at which it may be seen today.

On Tuesday, 12 September, 1882 the consecration of a new organ took place. The costs of the organ and fitting amounted to nearly £1,000. No record exists of an organ before 1830.

There were further improvements to the church in 1886 when the chancel was relaid with mosaic marble and several additional gas lamps were instal-

led. An old oak cover to the font which for some time had been kept at the vicarage had been restored to its place and at this time it was proposed to erect a reredos.

In 1892 plans were put forward to improve the bells and bellry as the peal of bells then were out of tune and damage was being caused to the tower. Improvements in this respect have been carried out in following years.

From time to time repairs and renewals were made at the church and in 1930 the old Saxon font, believed to be over 1,000 years old, was again restored to use in the church. Seven years later a new vestibule and doors in panelled oak were dedicated in memory of King George V. In this year extensive repairs were carried out to the roof which was leaking in parts during heavy rains.

The dedication of a new organ and its memorial cases by the Bishop of Ripon took place in 1953. It cost about £7,500.

In 1970, work was carried out on converting the old buildings adjacent to the church now used as the Church Hall.

In 1977, the Church commemorated the 1,350th anniversary of the coming of Christianity to Ilkley. Among the guests received during the year were the Archbishop of York, the Bishop of Bradford, the Roman Catholic Bishop of Leeds and the Lord Mayor and Lady Mayoress of Bradford Metropolitan District.

Sketch by Bill Pates, of Addingham.

ACROSS THE YEARS 9 JAN 1981

Conservative Association holds first annual meeting

100 Years Ago

The first annual meeting of the Ilkley Conservative Association was held in the College Hall, and was remarkably successful. The speaker was the Rt. Hon. James Lowther (former Secretary of State for Ireland) and the meeting was also addressed by Viscount Lascelles, W.M., Fison Esq. and Francis Darwin Esq. Mr. F. W. Fison, the chairman, was received by the assembled members with ringing cheers.

A ball was held at Ilkley Wells House for the employees and tradesman of this establishment. There was a plentiful repast a superbly decorated hall for dancing, and sweet music. The hostess was Miss Lowe, who was responsible for the general arrangement of domestic affairs in the large mansion. The genial host was Dr. J. F. Leeson, the proprietor.

In the advertisement columns The Ladies' School, Belle Vue, Ilkley recommended the teaching of Mrs. D. Brear and daughters assisted by resident governesses, who were ready to receive young ladies to board and educate and could offer "a separate room for little boys."

75 Years Ago

A serious accident occurred at a house in the course of erection in Grove Road for Dr. Hearder. Several men, employed by Messrs. Dean Bros. (Builders), were engaged on the building when a scaffold pole broke and four of them including Mr. Tom Dean fell 20 feet. Mr. Dean, together with Robert Emmott, George Rushworth and Leonard Wall were taken to the Coronation Hospital to have their injuries attended to by Dr. Milne, Dr. Hearder and Dr. Richardson.

Mr. Sidney Kellett presided over the prize distribution ceremony at a ball connected with the F (Ilkley) Company, 2nd West

Yorkshire Royal engineer Volunteers at Wells House Hydro. The Commander, Capt. H. E. Aykroyd presented a report of the year's work, including the camp under canvas at Bridlington.

With a view to helping the funds of the Coronation Cottage Hospital a social was held at St. Margaret's Hall, Ilkley, promoted by the Ilkley Female section of the St. John's Ambulance Brigade who sold over 400 tickets. Miss Myldred Johnson gave a clever impersonation of Miss Vesta Tilley.

50 Years Ago

Plans were in hand for a concert to be broadcast from the New Cinema, Ilkley on 27 January, 1931. The proposal originated from a member of the Ilkley Police Force, P.C. Hatt, and the concert was to be held in aid of the Police Orphanage. It was planned that Mr. Richard Wilson would take the solo part in the singing of "On Ilkley Moor 'Bant' at" the chorus being the Vocal Union.

Ilkley Winter Gardens echoed with the laughter of happy children when two hundred youngsters were entertained by the Ilkley Royal and Ancient Order of Buffaloes. Sweets and crackers were presented by Mr. Gray Sutcliffe and the Misses Sutcliffe, Bros. H. Roe, J. Turner, J. Young, R. H. Wood, J. Brooksbank and J. A. Atkinson were in charge of the games. A fine tea was provided by members of the Ladies' Committee and a dance was held for the adults in the evening.

Keen frosts were responsible for very bad road conditions in the area, producing road surfaces like glass.

25 Years Ago

About one hundred and forty children attended a party to celebrate the New Year given by the Ilkley and District Chamber of Trade. Children of the traders acted as hosts and hostesses and Mr. Hedley Fawcett the conjuror, gave an entertainment followed by a film show by Mr. T. Cawood.

Mr. Henry Hargreaves of Longton House, Main Street, Menston, announced his retirement from public life after serving the Menston community for 25 years. Mr. Hargreaves, aged 77, retired to give way to a younger man. He was Chairman of Ilkley Council from 1941-2 and had also been chairman of many committees.

Ilkley Young Conservatives held their annual dance at the Ilkley Moor Hotel. An added attraction was a beauty contest "Miss True Blue", the winner being Miss Beryl Taylor of Ilkley. The judges were Mr. M. Glover, Mr. and Mrs. F. O. Till and Mr. W. H. Lee.

Senior Citizens At New Centre 9 JAN 1981



A group of senior citizens are pictured enjoying afternoon tea in the spacious coffee lounge of the James Clarke and Sarah Foley Day Centre for the Elderly, in Cuntliffe Road, Ilkley, due to be officially opened on 17 January. An increasing number of senior citizens are making use of the tea and coffee service provided by the Centre between 12 noon and 4.00 p.m. every week day and enjoy the opportunity to mix with others in a relaxed atmosphere.

ALLOTMENT HOLDERS TOLD TO QUIT LAND WANTED FOR DEVELOPMENT 9 JAN 1981

Four allotment holders of land in Whitton Croft Road, Ilkley, have been given notice to quit by Bradford Metropolitan District Council. The Council who own the land have applied for planning permission so that a residential or office development may be built on

that site which has been used as allotments for over 16 years.

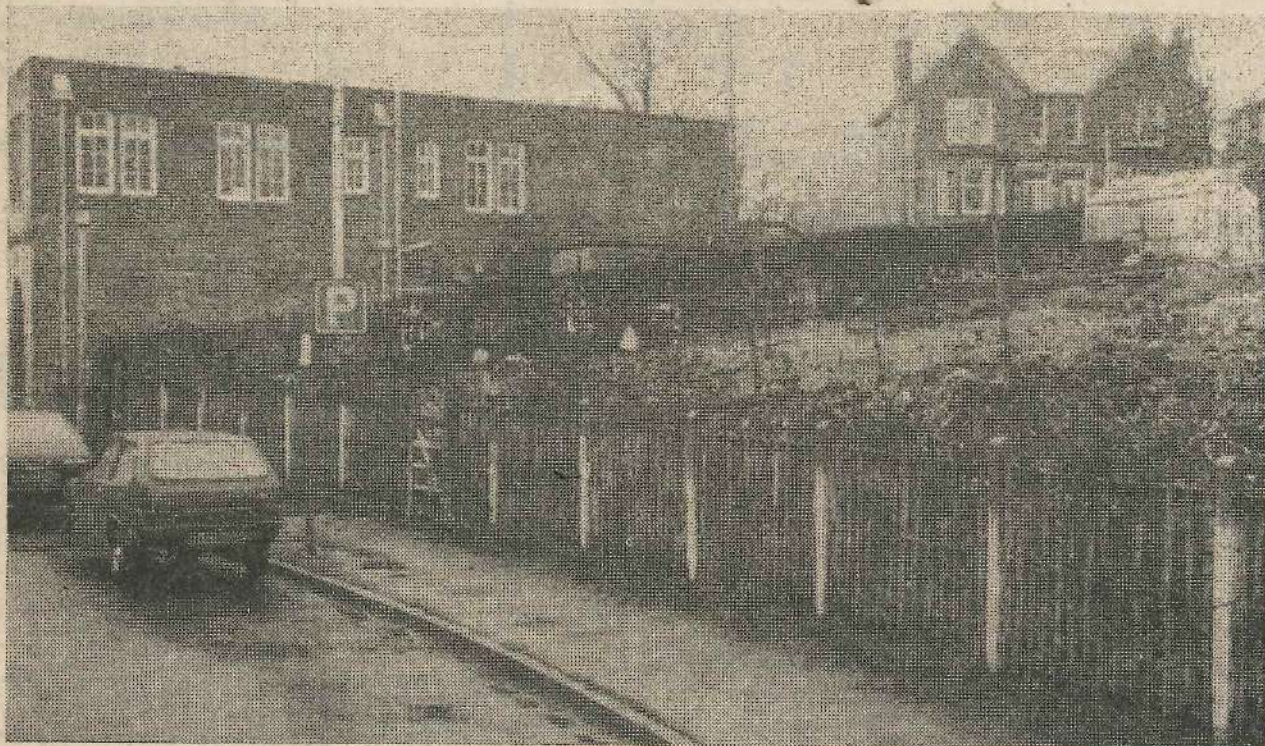
The plans were submitted by the Bradford City Solicitor, Mr. D. Overend for consideration by the Bradford Metropolitan District Council's Planning Department, who say the usual procedure is for the Council to

submit a planning application so, if it is approved, they will get a higher price for the sale of the land.

One of the allotment holders Mrs. C. Graham, of Chantry Close, Ilkley says she contacted the Council and was told the notice was effective immediately, with

the customary one year's notice being granted. The Council did tell Mrs. Graham that the holders would receive compensation for any losses incurred and would be offered alternative sites whenever possible.

Ilkley Parish Church, in



RATES RISE BY 269%
IN SIX YEARS

9 JAN 1981

ILKLEY HAS HAD ENOUGH OF BEING A PART OF THE BRADFORD AREA, SAYS CR.

Ilkley, which has faced rate increases of 269 per cent in six years, has had enough of being part of the Bradford Metropolitan District, Ilkley Parish Councillor's said this week,

They believe the Ilkley Parish would be better served if the area was part of a District Council other than Bradford and have set up a committee with a mandate to report to the Council by March on the various alternatives.

At the Council's monthly meeting on Monday night, Cr. E. S. Gardner, moving the proposal, said "in the eighteen months I have been on this Council, it has become increasingly clear that our views and hence the views of the people of Ilkley, are largely ignored by Bradford.

"The time has come for us to say to Bradford, enough is enough, and the people of Ilkley have had a great deal more than enough. We are not content to be regarded merely as a source of income for a profligate Council. We are not prepared to have our views on the planning of our town blatantly disregarded and the results of a carefully conducted survey treated with contempt," said Cr. Gardner.

Hell bent on Co-op

"If there is anybody in Ilkley who wants a Co-op or any other departmental store, supermarket, call it what you will, on our main car park I do not know of him, yet Bradford seems hell bent on putting one there. One is bound to ask why? However, if that is how they see things then the time has surely come for us to look outside Bradford. I do not accept that our mistaken decision to go into Bradford is irrevocable. What one Government has done another Government can undo," said Cr. Gardner.

"I know there is a long hard road ahead. I also know the Chinese proverb, a journey of 1,000 miles begins with one step. All I ask is that we take that one step. We are not at this stage laying down a detailed policy. We are just stating what we believe to be the feelings of most of our townspeople," he said.

Cr. Gardner stressed that the Committee was only considering the alternatives to Bradford.

"If there is a case to be made for staying in Bradford that case must be made in public in Council, not behind closed doors in Committee. But let us not dwell too long on the problems at this stage. In 1940 the world at large gave us little chance against Hitler. Five years later the victory parades were held. It may be that the same time scale will apply to this present struggle. In that case the sooner we start the better," said Cr. Gardner.

Opposing the proposal Cr. J. M. Shelton gave a brief history of the Council's unsuccessful attempts since 1966 to become part of other authorities. The Council had first considered becoming part of a new Wharfedale Authority and he had recently found a letter concerning a petition which 5,600 people had signed in an attempt to keep out of Bradford. The figure reached 10,000 to 11,000 and they even appealed to the Prime Minister and other Ministers of the day but to no avail, said Cr. Shelton.

Not Until 1989

He thought this latest move would create a lot of unnecessary work. He would like to think they could become part of a better authority but he could see no way of this happening at present. The electoral roll would have to be considered and there would have to be changes by the Boundary Commission and there were no changes planned until at the earliest 1989.

Cr. Shelton could see no point or reason how they could justify putting forward a case. They had been saying in 1972 that Ilkley Council would become nothing more than a talking shop and that was what was so frustrating. He could see no alternatives to Bradford and he thought the approval of the proposal would waste the Council's time and that of the Clerk.

Cr. W. R. Hill thought the remarks made by Cr. Shelton provided good reasons for supporting the proposal. What they wanted to know was what they could do, how to do it and would they have support, said Cr. Hill.

Chairman of the Council's Plans Committee, Cr. S. Crossley-Smith could see no point in discussing the matter and warned that if the proposal was accepted they could be "jumping out of the frying pan into the fire".

Wholeheartedly supporting the proposal Cr. C. D. Poole said the members who had put their names forward to serve on the committee were prepared to spend their own time dealing with this matter. They would not involve the time of the Clerk.

Cr. Poole pointed out that rates paid during 1973-74 by the Ilkley district amounted to £1m. They were now paying to Bradford £3.1m and Cr. Poole asked what they were getting for that money. This showed a 269 per cent increase since 1973-74 which was far in excess of inflation or cost of living increases, he said. In reply to some of Cr. Shelton's remarks Cr. Poole had this to say "nothing ventured, nothing gained". If they did not try to do something to improve matters then he thought they should pack up Ilkley Parish Council because it was nothing but a talking shop.

Cr. F. G. Lambert agreed with Cr. Shelton and did not think they would be able to achieve very much.

Ilkley Parish Council had tried long enough to bring about improvements with Bradford Metropolitan Council, but without much success, said Cr. J. L. Freeman. If the proposed Committee was willing to give up its time then he thought the time had come to do something like this.

Cr. Mrs. M. Renton assured the Council any Committee recommendations would be put to the full Council. No action at all would be taken without the approval of the Council, she said.

The following were elected to serve on the Committee: Crs. K. Atkinson, A. C. Dewhurst, E. C. Gardner, G. Johnson, C. D. Poole and Peter A. Williams with the Chairman Cr. Kenneth G. Johnson as an ex officio member.

Thirteen Councillors voted in favour of the proposal with

16 JAN 1981 ANOTHER STORE PLANNED FOR ILKLEY

Only months following the controversial plans to build a co-operative store in the Brook Street car park come more plans to build another supermarket on the British Rail goods-yard site next to the railway station.

The plans for the co-op in the car park is expected to go to a public inquiry.

The County's Development Committee has no objection to a supermarket being built on the railway goods-yard site, provided access to and from the store was adequate. Bradford Metropolitan Council has the final say.

ACROSS THE YEARS 16 JAN 1981

Orphanage Established At Ben Rhydding

100 Years Ago

An orphanage was established at Wharfedale Grange, Ben Rhydding, as a home for some 12 or 15 orphan girls. The cost was defrayed by Mr. W. H. Conyers who had taken up residence at Wharfedale Grange and fitted up one of the farm buildings adjoining his house. Mr. Conyers intended undertaking the entire expenses of the project at the outset but hoped that in time the people of Ilkley would take over and lend their support and develop it into an institution that would be out of the question for one person to support.

Dr. J. Fletcher Little, resident physician at Ben Rhydding Hydro, had a serious accident whilst riding on horseback across the old cricket ground in Skipton Road, Ilkley. His horse fell and he was thrown to the ground cutting the back of his head severely and bruising to his head and body. Some passing workmen ran to his aid, and he was attended and his injuries dressed by Doctors Call and Scott.

75 Years Ago

A number of well known local ladies were the organisers of a charity ball at Wells House in aid of the finances of the Coronation Cottage Hospital. This was a "brilliant social function" with "an elite character to the assemblage" who wore exceedingly beautiful clothes matched only by the magnificence of the decorations. Some imitation almond blossom proved particularly attractive, and innumerable fairy lights shimmered amongst the palm trees around the dance floor. About 180 people, representing the leading families of the town, participated in the enjoyment of the event. The ladies responsible for the evening were: Mrs. W. A. G. Walker, Mrs. Hampden Illingworth, Mrs. F. Muff, Mrs. Kellett, Mrs. Haserick and Mrs. Nussey.

Mr. Hoffman Wood had endeavoured on numerous occasions to secure a licence for a hotel he was desirous of building at the junction of Leeds Road and Cemetery Road which he intended to call The Salutation Hotel.

50 Years Ago

The annual Sunday school party in connection with St. John's Church, Ben Rhydding was the scene of a presentation to Mr. J. R. Bishop who had been Sunday School Superintendent for 14

years and was leaving the district. The Rev. W. Mulholland gave him an inscribed barometer on behalf of his teachers and pupils expressed thanks to Mr. Bishop for his valuable work at the church.

Mr. Ernest Waddilove, Wharfedale Lodge, Ilkley, a well known Ilkley man, was married at St. Giles, West Bridgford, Nottinghamshire, to Miss Constance Wilkinson. Mr. Waddilove was County Councillor, a former member of Bradford City Council and a well known figure for his interest in football and walking.

Ilkley Rugby Union Football Club first team narrowly defeated Harrogate Old Boys by three points to nil with a try scored by Tod.

25 Years Ago

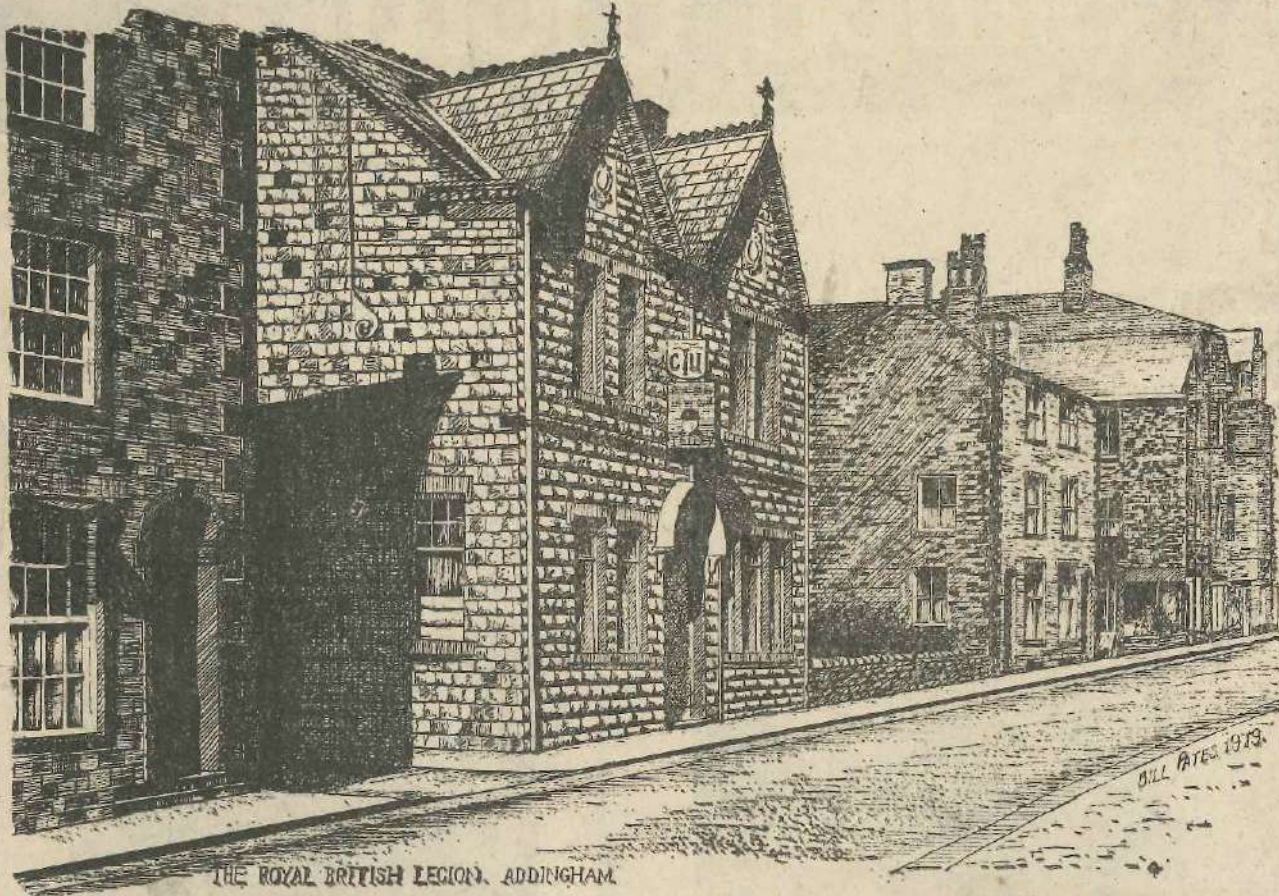
The West Riding County Education Committee recommended a plan for the provision of a new Secondary School in Ilkley to be included in the 1957-8 programme. This was announced just one week before a meeting was to be called by the Parents' Associations of three schools to protest at lack of facilities for education in the Ilkley area.

Mr. Desmond C. Birch, of Lancaster, was appointed second Mathematics master at Ilkley Grammar School. He was to take up his duties at the start of the summer term. Mr. Birch's appointment was to succeed Miss Alice Dean.

An Ilkley Moor Ranger shot and killed two dogs worrying sheep near the Swastika Stone on Ilkley Moor. A labrador and a border terrier were caught in the act of tearing at the legs of a sheep, and ten other sheep had been worried during the previous few days.

New British Legion Premises Were A Landmark Of Progress At Addingham

16 JAN 1981



THE ROYAL BRITISH LEGION, ADDINGHAM.

The premises of the Addingham Royal British Legion (pictured above), in Main Street, Addingham, were officially opened by Mr. H. Stirk on 11 December, 1953, who described the opening as "a landmark of progress, not only from the point of view of the British Legion, but also of the village."

The Addingham Branch of the British Legion (had been formed six years earlier and, apart from a short period at the Pleece Hotel, had its headquarters in the Swan Hotel, Addingham.

The new premises were originally used for a Conservative Club and many alterations and rejuvenations had to be made before the British Legion was ready to use them. This work was done volun-

tarily by Legion members, comprising joiners, decorators, plumbers, electricians and a number of other tradesmen, who spent much of their spare time getting the premises ready for the opening.

The Woman's Section of the Branch also gave invaluable help, providing curtains for all windows and making arrangements for refreshments.

Mr. Stirk paid tribute to the members when he said: "This is a great achievement and has only been managed by the unselfish and progressive attitude of members who had, over the last few years and especially the last six months, given their time and labour to that effort."

Dr. D. W. E. Burridge, of the West Riding County Committee, thought they had done a tremendous job. Starting from something very small they had produced a magnificent club which under the circumstances had been an extremely bold venture and he did not see how they could fail.

The new headquarters contained a billiard room,

a whist room, a bar and a reading room for the old age pensioners in the village. The members of the Addingham British Legion were particularly proud of the old age pensioners' room and officials of the club said that the Addingham Legion, as one of its main aims, intended to look after the interests of the elderly.

Today, the headquarters consist of two main rooms: a downstairs room containing a bar, seats and tables, where the usual gatherings take place, and a new upstairs room has been built, with a bar, where bingo sessions for the elderly and monthly discos for the younger generation are held. Sketch by Bill Pates of Addingham.

NEW DAY CENTRE FOR ELDERLY OPENS TOMORROW

16 JAN 1981
Hkley's new £200,000 day centre for the elderly is to be officially opened by the Rt. Rev. Wm. Gordon Wheeler, Bishop of Leeds, tomorrow (Saturday) afternoon.

The centre was built with money from a £250,000 legacy left by former Addingham residents James Clarke and his sister Sarah Foley, who emigrated to America, and has been named after the two benefactors.

Chairman of the Trustees Mr. Frank W. Harms said the centre in Cunliffe Road, was being used more and more, with senior citizens meeting there every Tuesday afternoon. This week had seen a record attendance, with over a hundred senior citizens at the meeting in addition to up to twenty casual visitors in the coffee lounge. These had included a party from the evergreens walking group, who had been on the moors.

Mr. Harms said things were running very smoothly, although various items had yet to be finished. They were still waiting for the garage to house the Good Neighbours Scheme minibus to be erected.

More and more activities were being planned, with suggestions for French classes, yoga groups, dressmaking and country dancing sessions being considered.

ILKLEY'S ATTEMPT TO LEAVE BRADFORD MET WITH "WHOOOPS OF JOY"

16 JAN 1981

News that Ilkley Parish Council is looking for ways of taking Ilkley out of the Bradford Metropolitan District has been received "with whoops of unmitigated joy from some members of the controlling Labour Group" according to District Councillor Mrs. W. J. Clavering (Cons.) of Menston.

They wished it to be known that they were willing to give the parish council every possible assistance, Cr. Mrs. Clavering added.

She said one of the main reasons she had wanted to be elected to Bradford Metropolitan Council after some years on Ilkley Parish Council was to improve the relationship between the two. "This aim has now been achieved — not by me, but by the parish council itself."

She had felt the Bradford authority was not very sympathetic towards Ilkley's views, and that the parish council was frustrated by not having any powers. On being elected to Bradford Council she had been able to put forward the parish council's views and explain that it was in Bradford's interests, certainly when under Conservative control, to have the parish council working with them.

Delighted

However, members of Bradford's Labour Group would be delighted not to have the Ilkley area in with Bradford because it would make life much easier for them and would virtually ensure that the district council was permanently Labour controlled, Cr. Mrs. Clavering said.

She urged the parish council to think again because she felt it would be playing into the hands of the Labour Group if Ilkley left the Bradford District. The parish council would be doing itself a lot of harm and putting the Conservative Group in a very difficult position if they pressed on.

She felt there was very little chance of Ilkley being taken out of the Bradford District now that it was in, and that the parish council and the Conservative Group should be working together to get the best possible deal for the area.

They should make the district council work efficiently on behalf of the people, and they would get more sympathy in Ilkley if they co-operated a bit more, she concluded. The people of Menston were not unhappy with Bradford Metropolitan Council, she added, no less so than they were when under the former Ilkley Urban District Council.

"Cock A Hoop"

District Cr. Harry Peacock (Lab.) of Steeton said the Labour Group as a whole had not discussed the matter, but some individual members were "cock a hoop" that Ilkley Parish Council wished to leave Bradford.

He personally felt Ilkley, along with places like Silsden and Addingham, should never have been included in Bradford District in the first place. He "would not be displeased at all" if Ilkley area was taken out.

Cr. Peacock, who said he liked Ilkley and had no animosity towards it, thought the parish council was smarting over Bradford's going against their views with regard to the proposed co-op development in Hawksworth Street and felt much of the trouble stemmed from that matter.

He stressed that Ilkley received the same treatment as everywhere else, and that the Planning Panel, of which he was Chairman, very rarely went against Ilkley's views.

Cr. Peacock said he did not agree with Ilkley having a parish council, while places like his own Keighley Ward, which was as big as Ilkley, did not have one. He felt everybody should have been the same, all having a parish council, or none having one.

"Not done their homework"

Labour Councillor Colin Hunter of Burley, was concerned that Ilkley Parish Council had not "done their homework" before publicly complaining about rising rates.

"The crucial point to understand is that local government is being savagely attacked by the present Tory Government, so that merely to maintain the present services at their unacceptably low level it requires rate rises in the region of fifty per cent to make up the shortfall in Government support," he said.

He felt that in order to begin to offer informed opinions a number of facts were needed.

"This year (1980-81) the Government Rate Support Grant to Bradford was £97.1 million. For the coming year (1981-82) Bradford needs £101.75 million from the Government, for a stand-still budget to take into account the effects of inflation. However, Bradford's share of the Government Block Grant has fallen to an estimated £94.4 million."

Services

Cr. Hunter said no-one had yet said they did not want the services already offered to the District's ratepayers, so the cost, refused by the Government to maintain them had to be borne by the ratepayer.

"Any rise is thereby directly attributable to the present Government. Please therefore direct all complaints on this matter to Thatcher, Heseltine and Co.," he said.

"Their so-called monetary policies are detrimentally affecting those in the community who are least able to afford it, while it is the rich who are making gains at their expense, as was the case in the 1930s," Cr. Hunter continued.

"But even in these exceptionally difficult financial times for local government, the Bradford Labour Group are trying to counter this trend by shifting the balance of their resources to positively discriminate in favour of those who are most at risk. Unfortunately this does not mean more resources, but a re-allocation of present resources, albeit more efficiently managed."

"The present Government came to power under promises of lower direct taxes. What they did not tell us was that this would be more than complemented by indirect taxation such as VAT, cuts in public expenditure, and now the necessity for a greater direct subsidy by ratepayers for local services."

"The Tories have a lot to answer for. The time is fast approaching when they are going to have to do just that," Cr. Hunter concluded.

COUNCIL SAYS NO TO YORKSHIRE BANK'S PLAN TO EXTEND ILKLEY BRANCH

16 JAN 1981

Plans to extend the Yorkshire Bank by incorporating the premises now used by Ashe and Nephew Ltd. in Brook Street, Ilkley, have been refused. The Planning Panel of Bradford Metropolitan District Council has turned down the application. A representative of the Panel explained: "The property occupies a prominent position in one of the principal shopping streets in the town centre, where the number of

office intrusions is strictly limited."

Ashe and Nephew hold the premises on lease from the bank, who have decided not to renew the lease when it expires in October this year, regardless of the Council's decision.

Mr. Eric Senior, of Yorkshire Bank's Head Office in Leeds, said no formal statement of the reasons for refusal had been received

from Bradford Metropolitan Council, but added that an appeal from the bank would be "fairly certain".

The Managing Director of Ashe and Nephew's Head Office in Huyton, Merseyside, Mr. L. L. Parkes, commented that he would have been "somewhat surprised" if the Yorkshire Bank had been allowed by the council to extend their premises, for the same reasons the council gave for refusing the application.

About the termination of the lease in October, Mr. Parkes said: "The Yorkshire Bank are entitled to take over the premises and we are in no position to do anything about it." He added that Ashe and Nephew were seeking another site in Ilkley and have two in mind at the moment, but could not comment further at this stage.



FORMIDABLE TASK FACED WORKERS CALLED TO CLEAR CONTENTS OF HOUSE AT BEN RHYDDING

Workers called to clear the contents of a house in Ben Rhydding have been faced with a formidable task. Every room and passageway in the large Victorian detached house known as "Ryhill" in Margerison Road was piled high with books, newspapers, parcels and clothing.

So massive was the operation to clear the contents that in the first two weeks nine skips were used and five hundred refuse bags and five council lorries were filled. Today (Friday) the operation was still in progress as workers continued to sort articles that went back in time over the past ninety years.

The Estate Agents appointed to clear the contents of the house and dispose of the property and the Police said it was absolutely necessary to "keep quiet" about the operation until all valuables had been removed. This had now been done and the valuables were to be put on sale by auction in the near future.

The property belonged to Miss Mary Booth who towards the end of last year collapsed and died whilst in Ikley. For many years she had lived with her bachelor brother, Mr. Harry Booth, who died in June, 1979. The house, built in 1900 was purchased by their parents in the early part of this century from a then well known local family called Brokeryke. It was believed Miss Booth had left no will but it was said she had a distant relation living in the South of England.

Piles of Books

As workers entered the premises they were confronted with piles upon piles of books and newspapers and could only examine the property by following a single file passageway left between the books piled on both floors. Even the broad stairway was reduced to a width of about eighteen inches as more and more books had been stored on the stairs and on the landing.

It was estimated that the five bedroomed house contained in excess of 25,000 books but a partner for the firm of estate agents of Hepper Watson, of Ikley, Mr. John Hardy, who was dealing with the affair, said he would not even like to guess. There were literally thousands upon thousands of books, he said.

RATES COULD RISE BY 28 PER CENT

Labour-controlled Bradford Metropolitan Council is to defy the Government's guideline to cut its spending by £8,600,000, or 5.3 per cent, in the next financial year beginning in April.

The controlling group has decided that the overall cuts should not exceed two per cent. In fact, the service committees will be required to cut by 3.8 per cent so that the Council will have 1.8 per cent more than last year for growth items such as urgent repairs to buildings and an increased subsidy for council tenants.

The Social Services Committee is being authorised to reduce its spending by one per cent, less than the other committees, because members believe excessive cuts would seriously affect services for the elderly and handicapped children.

Cr. Derek Smith, the Council Leader, said on Wednesday that it was not yet possible to indicate the rate increase, but documents produced at a press conference showed that a two per cent cut in spending would increase the Bradford rate for householders by 43 per cent because of a reduction in Government grants. The levy would be 117.2p in the £ compared with 87.4p.

The total rate bill will depend on the County Council precept. If it is unchanged the bill for Bradford householders could rise by 28 per cent. If the precept is reduced by 3p the total bill would rise by 25 per cent for householders.

The respective increases for industry in those circumstances would be 24 per cent and 31 per cent.

Cr. Smith said the committee had yet to decide how they would make their cuts, but he promised that the Council's no-redundancy policy would not be abandoned although there might have to be some re-allocation of staff.

The "Illustrated London News" for Christmas, 1899 included many large sketches illustrating the stories which appeared under the names of Henry Sefton Merriman's "Tomasso's Fortune" and Ian Maclaren's "With Compound Interest" besides others.

Advertisements of the day included those for Swan Soap; Ogden's Guinea-Gold cigarettes asking readers to "put your foot down on imitations, foreign and otherwise"; Fry's pure concentrated cocoa; Sunlight Soap for rest and comfort; Bird's Custard Powder and Carter's Little Liver Pills which "touch" the liver.

Musty Smell

Throughout the house there lingered a musty smell and the kitchen at the rear of the house contained vast quantities of tinned and bottled food. There were several boxes of tins of cornbeef and shelves were crammed with rusting tins of vegetables and fish whilst on the floor there were large jars of instant coffee.

When workers reached a large garage within the grounds they were to find yet again large quantities of tinned food. The main part of the building was occupied by a saloon car which rested on bricks after being "laid up" probably in 1939 at the outbreak of the Second World War.

Apart from a little rust here and there the car, believed to be a 1931 Morris Isis with a six cylinder engine, was almost in perfect condition. It carried a spare wheel on its running board and no doubt was one of the limousines of the day. This is also to be sold by auction.

Ryhill was last in the news during 1959 and 1960 when the former Ikley Urban District Council was concerned over the condition of the house.

Estate Agent's Answer To Criticism

In a statement to the "Ikley Gazette" Mr. John Hardy for Hepper Watson, estate agents of Ikley, said "I would like to express on behalf of those of us acting in the estate of the late Miss Mary Booth, my gratitude to the people of Ben Rhydding and of Margerison and Bolling Roads in particular. It has been more than obvious this past two weeks that there has been considerable activity outside the late Miss Booth's house, and the commencement of our work unfortunately coincided with the strongest winds that we have experienced for a long time. The neighbours have been unfailingly helpful and have shown considerable forbearance in the face of a great deal of litter which unavoidably found its way into private gardens and the church yard. We are most grateful to them.

"At the same time I would like to take the opportunity of answering a certain amount of criticism which we have received and which undoubtedly arises from the best of intentions. It has been said that the method being used in clearing the house has been irresponsible to the extent that perfectly readable books, a great quantity of shoes and a vast amount of clothing and fabric have been piled outside the house, some of which, inevitably have been spoiled by the rain and melting snow.

Valuable Contents

Explaining the size of the problem which had confronted them Mr. Hardy said "I betray no confidence when I say that the quantity of the contents of the house were such that those items of relatively lower value simply had to be removed in order to make space within to sort out the more valuable items. Add to this the fact that we and the Police have been acutely aware of the vulnerability of the house to vandalism, theft and fire. Because of this, a massive operation has been organised to clear the house as quickly as possible in order to safeguard as far as was possible the many valuable

contents, which have been removed to the saleroom. To prove the wisdom of our method of working the house suffered a break in the other night but blessedly all the valuable items had been removed and no loss was suffered.

*continued
on next page →*



"The enormity of the problem speaks for itself when the following facts are considered. Nine skip loads have been removed from the house; over 500 refuse bags have been filled and so have five council lorries. More than 500 man hours have been worked — every day of the past fourteen, by a band of very hard working and most reliable young people, and the work is still not completed. Those acting in the estate have been constantly consulted and have expressed complete confidence in the way in which this matter is being handled.

Well Loved

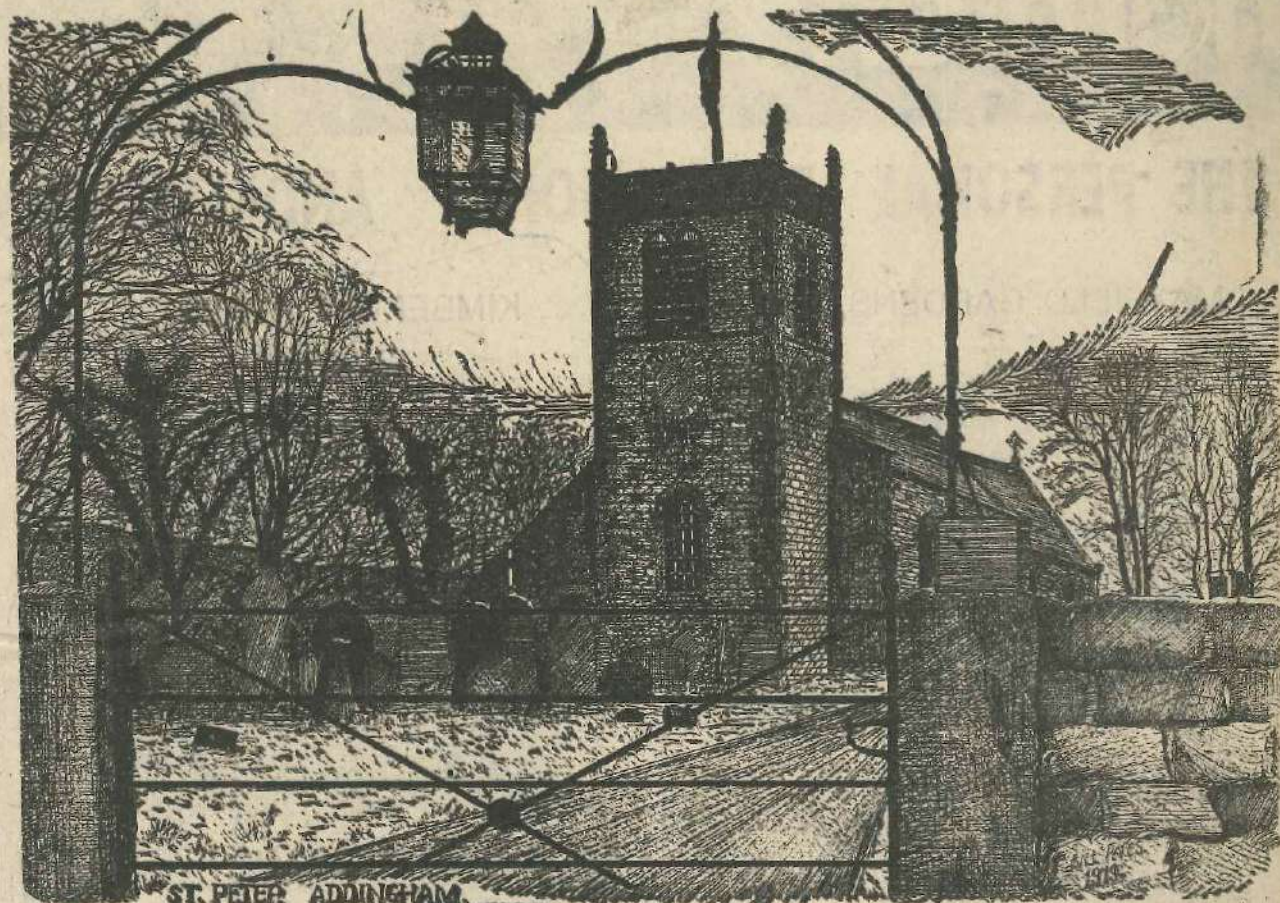
"Miss Booth was a most cultured and well loved Ilkley character and she will be sadly missed by those of us who have been privileged to know her for many years. I hope that she would have been pleased to know that a vast quantity of books, shoes, clothes and fabrics have been collected by welfare and charitable organisations from all over the Bradford Metropolitan District, which will be used immediately for less privileged people, young and old. Here again my thanks are due to Geoffrey Vere and a hard working band of Good Neighbours and other local organisations Ilkley Round Table and Ladies Circle who arrived in force, and to countless voluntary welfare workers from all over the district.

"You may be sure that we shall do our utmost to tidy up the garden of Ryhill as soon as is humanly possible," said Mr. Hardy.

Mr. Hardy said the house would be offered for sale, probably towards the end of February, and that already there had been twenty enquiries about it.

Addingham Church's History Dates From The Ninth Century

23 JAN 1981



St. Peter's Parish Church, Addingham, has an interesting history, with evidence suggesting that the site of the present church was used as a meeting place in the late Ninth century.

A small cross, with rude carving on all sides, was made and erected on the site. The shaft of the cross, found in 1948, is of coarse sandstone, the sides with panels of interlacing "cord" or "twist". The face has two lively little figures, looking up to a rudely carved cross in the centre in apparent adoration. Experts dated it as late Ninth century.

A building of stone was not erected until the country had settled under Norman rule so that it was perhaps in the last quarter of the 12th century when the Vavasours were lords of the new manor, that the first church was built. It had the characteristics of the Norman style of architecture — round headed arches and window heads with chevron ornament and thick walls with narrow openings.

The old Norman church stood for several centuries but, falling into disrepair, was replaced by a church in the late Perpendicular style at about the time of Henry VII. Towards the end of the 15th

century Sir Henry Vavasour was lord of the manor and his son Leonard was rector of the parish and it is probable the reconstructed church can be attributed to the members of the ancient family. Of that church the north aisle, the arcade of four arches, the chancel arch and the fine oak roof of the nave remain, the most ancient parts of the present structure.

In 1756, further alterations were made. The outer porch at the south door was pulled down, as was the south wall, re-built with undistinguished windows.

The roof of the nave was propped and so retained, though that of the chancel was one of the possible casualties. The present tower was added as a substitute for the steeple first considered.

A peal of six bells was hung, each with an appropriate motto. A new gallery was erected at the west end of the church. Thomas Guyer, a village carpenter, being employed to "set up a new loft".

The cost of this work was largely met by means of the Addingham Brief—an instrument by which a national appeal could be made; St. Margaret's Westminster made a contribution of five shillings and sixpence.

A good deal of reconstruction was carried out in the chancel in 1858.

A new roof was found necessary in 1951 and it was then that the previously hidden interior oak timbers were revealed for the first time for 200 years.

Since then, new chancel woodwork has been provided by generous benefactors, the craftsmen being Messrs. Thompson ("Church mouse") of Kilburn.

Sketch by Bill Pates of Addingham.

£250,000 ESTIMATE OF LOCAL RECLUSE'S ESTATE

23 JAN 1981

The sale of thousands of books, a 1931 Morris car and a Victorian detached house comprising the estate of Ben Rhydding recluse Miss Mary Booth, who died in December, is expected to amount to almost £250,000.

The books and other valuables will be auctioned by Phillips, the Leeds fine auctioneers, in April, and the house, "Ryhill", Margerison Road, will be put on the market in March.

Miss Booth did not leave a will but a distant relative has been traced in the London area. It is understood the relative is a viscount, but this has not yet been confirmed.

When workers arrived to clear the house after Miss Booth's death they were faced with a massive task. Books estimated to number more than 25,000 were piled four feet high throughout the house, along with unopened parcels, bolts of cloth, stocks of food and hundreds of pairs of unused shoes in their original boxes.

Many of the books shoes and other items are being given to charities and schools in the area apparently on the instructions of the relative from London.

COUNCILS CONSIDER COMPLAINT OVER NUMBER OF FAIRS AND CIRCUSES ON THE EAST HOLMES

23 JAN 1981

Only in special circumstances will more than one circus and one fair be held each year on the East Holmes playing field at Ilkley.

A move that they should be held in other parts of the town instead of on the East Holmes field each year has met with little success.

In October last year R. C. Mial, of "The Paddock" Curly Hill, Ilkley, complained to the Parish Council that during 1980 there had been three fairs, one for a fortnight, plus a circus, all on the East Holmes field. That was not at all a tolerable situation and indeed there were times when they had felt they were being driven out of their home, complained Col Mial.

A number of alternative sites were suggested and Ilkley Parish Councillors at a meeting of the General Purposes Committee on Monday night were told that Bradford Metropolitan Council had now considered these.

The City Recreation Officer, Mr. H. O. Williams in a letter to the Council said none of the suggestions had met with favour. These included:

Riverside Gardens — This was unsuitable due to the access and the close proximity of houses.

Edge of the Moor — This was an isolated site and would provide traffic problems.

West Holmes — This was too close to residential property and Mr. Williams could recall complaints were made when a caravan rally was held on that land.

Playing Fields — Mr. Williams could not see the Schools Division allowing the use of playing areas for that type of event.

Mr. Williams could not suggest any other site that was far enough away from residential property and would not cause a nuisance.

Commenting on the number of events on the East Holmes during last year Mr. Williams said "I think the problem arises from the local organisations in Ilkley booking the East Holmes for charity events and booking a small fair to raise more money. If we stuck to our original arrangement of one fair and one circus per year on that field the problem would be resolved.

Cr. J. L. Freeman thought the area should be restricted to one circus and one fair per year and the Chairman of the Committee, Cr. W. R. Hill explained this had been the original arrangement. However during last year some charitable organisations had held events on the field and had incorporated a small fair.

The additional fairs held during the year had been small ones associated with the Black Hats v White Hats cricket match organised by the Ilkley and District Chamber of Trade and the bonfire organised by the Wharfedale Lions, said Cr. J. M. Shelton.

Cr. C. H. Scaife said they had exceeded the limit and Cr. Freeman thought the Council should abide by its original arrangement to allow one fair per year.

Cr. Shelton said the small fair attached to the Wharfedale Lions bonfire event had been added to make the event even more successful.

"They will be applying again for similar arrangements because I do not see it was such a nuisance," said Cr. Shelton. "These small fairs were tied up with other functions and I think they should be considered on their merits," added Cr. Shelton.

Cr. Peter Williams said he would like to see some form of enjoyment provided for the people of Ilkley and he would even go as far as recommending a fair in the winter besides that in the summer. Out of 52 weeks we should have at least two fairs and two circuses, he said.

Other Crs. pointed out that fairs did not operate during the winter months and Cr. Shelton said there was a showman's agreement whereby a fair did not follow another until after nine weeks.

The Committee agreed to recommend to the Council that one fair and one circus should be permitted yearly on the East Holmes field and that any further applications should be considered on their merits.

ACROSS THE YEARS

23 JAN 1981

Severe Winter Suspends Outdoor Work

100 Years Ago

Severe winter weather suspended to a large extent all outdoor work in the Ilkley district, and in consequence some families were "insufficiently supplied with wholesome and nourishing food." A meeting was held to discuss whether a soup kitchen should be opened in Ilkley. The meeting was adjourned so that the extent of the help needed could be ascertained and means of arranging relief assessed. Mr. W. Mitton, of Bradford Old Bank, upon hearing a long list of needy cases proposed that a soup kitchen be started at once. John Milner of Weston Road offered the use of an empty house in Wharfe View. Donations were received from Ilkley residents and a committee was formed to run the kitchen.

The minimum temperature was 25 degrees below freezing at one stage, the lowest recorded at Ilkley for many years.

The sudden death of a sixty-eight year old gardener's labourer of Ash Grove, Ilkley, was reported, the cause being given as apoplexy brought on through exposure to the extreme cold whilst at work in the vicinity of the filter beds.

75 Years Ago

Members of the Liberal Party were jubilant at the result of the General election contest in the Otley division when Mr. James Hastings Duncan was returned with a largely increased majority of 1,649 votes. Out of a register of 1240 voters in the Ilkley polling district about 1000 recorded their votes.

Miss Amelia Sutcliffe, daughter of Mr. Henry Sutcliffe, Eastmoor, Ilkley, was appointed clinical assistant to the Southern branch of the Leeds Public Dispensary.

Prices at the Otley provision market in January, 1905 included eggs at 9 or 10 for 1s; butter at 1s. 10d. for a 24 oz roll; jugs of cream at 6d. each; beef at 6d. per lb; pork at 7d. per lb; chickens at 3/3 each; carrots 1d. per lb; pheasants 5/6 per brace; oranges at 9d per dozen; and potatoes at 6d per stone.

50 Years Ago

The disappearance of an Ilkley solicitor and Councillor gave rise to a great deal of anxiety in the town. He had not been seen by his family or Ilkley friends for ten days after carrying out his business at the Leeds County Court. The police circulated a description and asked for any information regarding his whereabouts to be notified to any police station.

Ilkley Education Sub-Committee was told by their Chairman, Mr. A. Talbot, that the scheme for the erection of a Girls' Secondary School on land purchased in Cowpasture Road had been dropped but there was some prospect that it could be

utilised to provide a Central Mixed School to serve the areas of Addingham, Ilkley and Burley.

The Rev. W. K. Still was appointed to work as Minister of the Ilkley Baptist Church from 1 February following a pastorate at Gildersome which he had held during the previous nine years.

25 Years Ago

Between 500 and 600 people attended a meeting called by the Parent Teachers Associations of the Ilkley and Burley-in-Wharfedale Junior Mixed Schools in the King's Hall and passed a resolution demanding without delay improved educational facilities for education in the district.

Mr. H. Haddrill told parents he was appalled at the Dickensian conditions which prevailed in the schools of the town, particularly the buildings of the Church school in Leeds Road, and wondered why these conditions had been allowed to continue. He hoped that the Ministry of Education would approve the plans for the new Secondary School.

Mr. J. Bennett, represented the views of the Burley Parents' Association, and said that although they were satisfied with the Burley Junior school, they had to send their children to secondary schools in Ilkley at eleven plus, and shared the concern of the Ilkley parents regarding the accommodation for children in this age group.

BISHOP OPENS ILKLEY'S "FAIRY TALE" NEW £200,000 DAY CENTRE FOR THE ELDERLY

23 JAN 1981

"A fairy tale" and a "dream come true" were comments used to describe the story of Ilkley's new £200,000 day centre for the elderly when it was officially opened on Saturday by the Roman Catholic Bishop of Leeds, the Rt. Rev. William Gordon Wheeler.

Mr. Harms said the history of the project was like a fairy tale. In 1977 he had been asked by Ilkley Rotary Club to investigate the possibility of providing some centre for the elderly, and with support from local organisations he had started looking at an old building in Ilkley car park. However, at that time the Bishop had become involved as he was seeking some means of carrying out the wishes of the late James Clarke and his sister, Sarah Foley.

They had emigrated from the Ilkley area to America, where they had made their fortunes, and on their death the Bishop had been left £250,000 to use for the benefit of the elderly of the Ilkley district.

Mr. Harms said all the people of this area should be grateful to the generosity of James Clarke and Sarah Foley, after whom the new centre was named. It was a monument to their memory and was without parallel in the whole country.



Pictured from left to right at the opening are Cr. Arnold Lightowler, Lord Mayor of Bradford Metropolitan District, the Rt. Rev. Wm. Gordon Wheeler, Bishop of Leeds, Mr. Lightowler, Mrs. Johnson and Cr. Kenneth G. Johnson, Chairman of Ilkley Parish Council.

Mr. Harms went on to pay tribute to the many organisations who had been involved in the project and to the community spirit which it had produced.

The Bishop thanked Mr. Harms for his involvement as co-ordinator and convenor and said the day centre scheme had taken a great responsibility from his shoulders after he had been given the task of using the Clarke-Foley bequest for the benefit of the elderly.

He said the building was a magnificent addition to the town and would be a great asset to the community.

The Bishop explained that James Clarke and his sister were the children of an Irish shepherd who came to Addingham in poverty in 1870. They worked in the mill at Addingham before later emigrating to America, where they made their fortunes. Although the family lost much in the Wall Street crash they became very well off.

About ten years ago James Clarke came to this country and saw the Bishop, explaining that both he and his sister wished to leave their

money to benefit the elderly of the area in which they had grown up.

After both had died there was a long legal quarrel in America, but eventually the money had become available and the Bishop had wanted to use it to the best possible purpose.

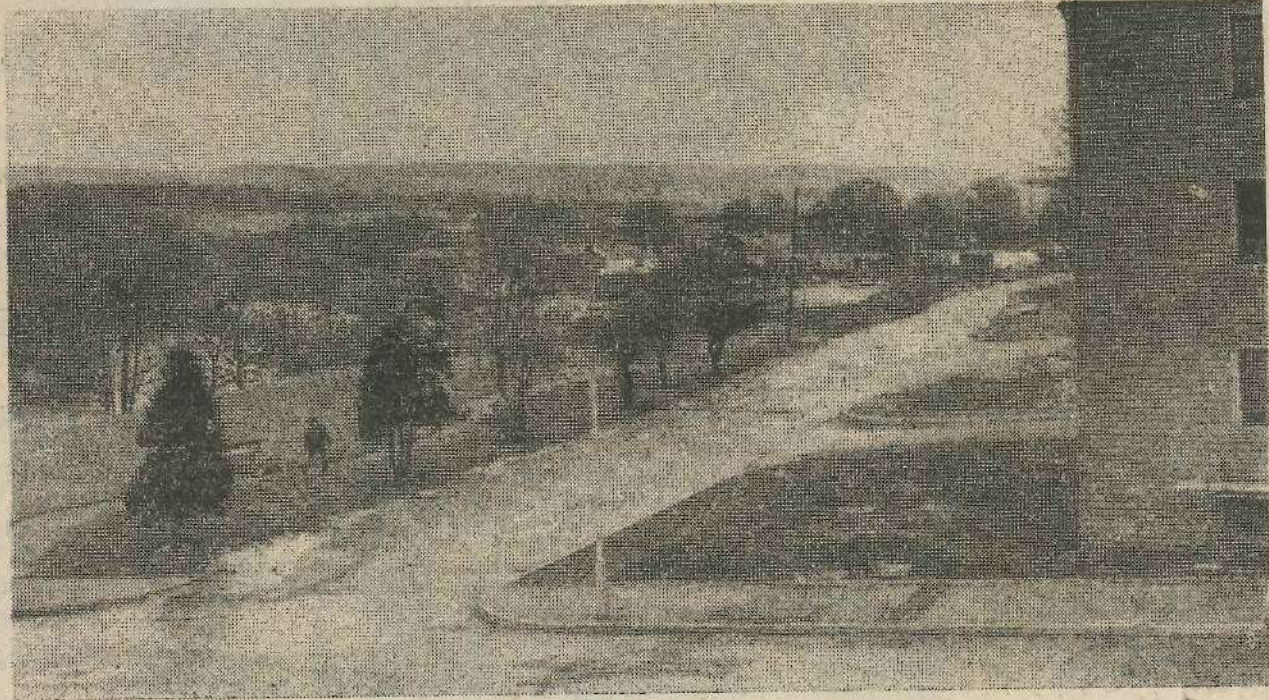
It was a remarkable story, and he had great pleasure and honour in declaring the James Clarke and Sarah Foley Centre open, he concluded.

Cr. Lightowler, Lord Mayor of Bradford, said the opening of the centre marked a new chapter in Ilkley, which was already noted for its care of the elderly. It would be a great asset to the elderly and to the many voluntary organisations involved with them.

He felt the new centre would become a focal point for the elderly and bring a new unity of purpose.

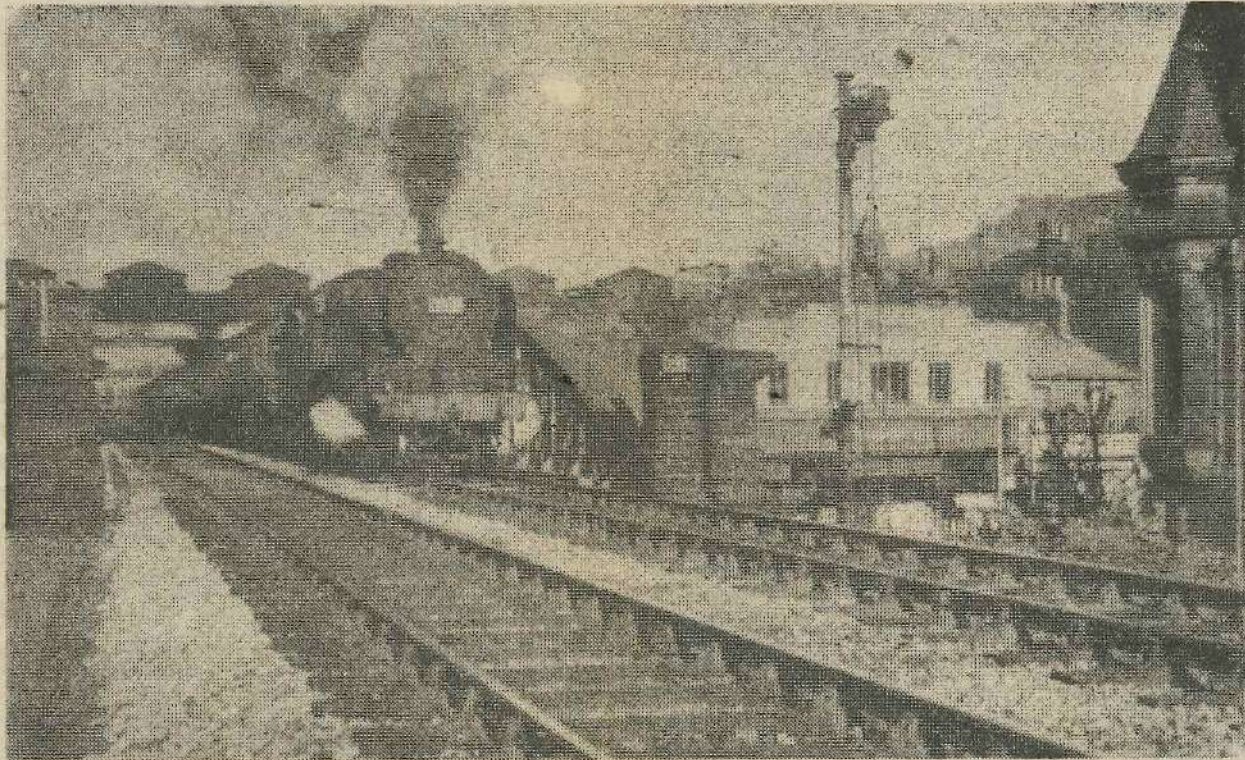
Mr. G. Vere of Ilkley Good Neighbours Scheme ended the official opening ceremony by expressing thanks to the Bishop, the Lord Mayor, Mr. Harms, and to the many representatives of involved organisations present.

30 JAN 1981



Plans for a relief road along Castle Road have now been scrapped, it was announced this week. Picture shows the eastern part of Castle Road from its junction with New Brook Street.

When The Railway Crossed Brook Street 30 JAN 1981



It is almost sixteen years since the last passenger rail service ran westwards from Ilkley across Brook Street and through the Wharfe Valley to Skipton and beyond. This picture by Mr. F. W. Smith, of Ben Rhydding, not only recalls those days but serves as a reminder when the railway scene was more prominent in Ilkley's shop-

ping centre. Gone is the steam railway locomotive and the bridge which spanned Brook Street for almost eighty years. British Railways withdrew its last steam locomotive in 1968 and Brook Street Bridge was dismantled in July, 1966 after the Ilkley-Skipton railway was closed under the Beeching proposals in March,

1965. Excursions to Ilkley by rail were fairly frequent during Bank Holidays and at weekends during the summer and this picture illustrates a return excursion from Ilkley to Wharfe Bridge near Stockport, at 7.20 p.m. on Sunday 15 May, 1955. The picture was taken from the railway embankment on the

site now occupied by the paved footpath leading from Brook Street to the central car park. The locomotive crossing Brook Street bridge is Patriot Class 4-6-0 No. 45505 named the Royal Army Ordnance Corps, a type of locomotive which was rarely seen in Ilkley. In the background of the picture Woolworths store can be seen.

II
Que
stre
natu
ings
had
floo
seve
been
diff
expe
cribe
clear
occa
the
place
Re
Ilkle
inhal
924,
with
83
unoc
The
Fire
View
A.
Capt
repor
three
the p
in th
which
able
capac
The
of. I
keenl
Ilkley
Harro
servic
made
lookin
choos
Ilkley
intend

Ilkley Described As The "Queen Of Wharfedale"

100 Years Ago

Ilkley was described as "The Queen of Wharfedale," with stress being laid on the equable nature of its climatic surroundings. Whilst other localities had had severe thunderstorms and flooding Ilkley had escaped the severe weather. There had also been very heavy snowfalls in different parts and Ilkley had not experienced these. Ilkley was described as having a beautifully clear atmosphere, fog free with occasional gleams of sunshine in the winter months and an ideal place for winter residence.

Recent census figures taken in Ilkley gave the number of the inhabitable dwellings in Ilkley as 924, and it was reported that notwithstanding the hard times only 83 of these houses were unoccupied.

75 Years Ago

The annual dinner of the Ilkley Fire Brigade took place at North View Hotel, Ilkley, with Supt. J. A. Middlebrook in the chair. Captain Powell presented his report and said there had been three fires in 1905 as against two the previous year. The worst was in the laundry at Denton Hall which although causing considerable damage put to the test the capacity of the fire engine.

The rivalry between the towns of Harrogate and Ilkley was keenly felt in 1906. However, Ilkley deplored the fact that Harrogate had a far better train service to and from Leeds, which made many Leeds business men looking to live in a spa town choose Harrogate in preference to Ilkley. The District Council intended to approach the railway

companies to see if a better service could be obtained for Ilkley.

Dr. Bampton was elected to succeed Mr. A. H. Davis as president of the Ilkley Advertising Board at the annual general meeting in the District Council Offices. Dr. Bampton had faith in the work of the Board and helped to advance the popularity and prosperity of the town.

50 Years Ago

The Rev. Alban Henry Wellington, former Vicar of St. Mary's Bishophill, York, took up his duties as Vicar of St. Margaret's Ilkley, starting the third week in January, 1931. He succeeded the Rev. A.B. Carter who was appointed to be Vicar of Scarborough. The service of institution was performed by the Bishop of Bradford, Dr. Perowne, and that of induction by Archdeacon Wilson, of Bradford.

Ilkley enjoyed its very first concert to be broadcast "On the Air" from the New Cinema, which was organised by the Bradford City Police. An outstanding portion of the broadcast was said to be the song "On Ikla Moor baht 'at", which was led by Mr. Richard Wilson (bass) and was introduced to the listeners by Mr. Fred Sugden, Chairman of the Ilkley Urban District Council. Prior to the opening Mr. and Mrs. Sugden held a reception in the New Cinema Ballroom at which the guests included members of the Council, the Otley Bench of magistrates, the Lord Mayor of Bradford, and the Chief Constable.

25 Years Ago

Jean Hanson was nominated "Best Girl of the Year" when the Girls' Life Brigade held their annual service in the Leeds Road Methodist Church.

The Ilkley Section of the Otley Division of the West Riding Constabulary held their annual ball at Craiglands Hotel. Between 300 and 400 people attended. P.C. E. Jenkins acted as M.C. for the evening, and prior to the ball senior officers held a dinner at the hotel.

The Ministry of Housing and Local Government informed Skipton Rural District Council that it could acquire the former Addingham A.F.C. football field for the purpose of building houses but not, as requested, the adjoining field belonging to Messrs. W. Brear and Sons, Sawmill Merchants. This meant that only 20 houses instead of the intended 36 houses would be erected. There were 37 applicants urgently needing Council accommodation and there would be more as a result of slum clearance in the months to follow.

MEN BEFORE COURT FOR DESTROYING GAME

100 Years Ago

A labourer from Ash Grove, Ilkley, and two Bradford men were charged with unlawfully entering enclosed land in the occupation of Ayscough Fawkes, Esq., of Farnley and destroying game. After a long hearing the Ilkley man was acquitted of being an accomplice but the two Bradford men were each sentenced to five years penal servitude.

Mr. F. W. Fison presided at the Annual meeting of the Ilkley Conservative Association at the Crescent Hotel when there were many enthusiastic members present. Mr. George Brumfitt the hon secretary, said the year had been extremely successful with an increase in membership from 60 to 80.

The Lister's Arms Hotel Estate was offered for sale by auction by Mr. John Heppitt of Messrs. Hepper and sons (Auctioneers) Leeds. The bidding started at £2,500 and was lively until £4,150 was reached and then was finally sold to Messrs. Brown and Carson, Spirit Merchants, Leeds, for the sum of £4,360. The estate consisted of the famous old brewery known as the New Inn to which was attached the Ilkley Wells Brewery, an establishment famous both for its "barley-bree", a large detached billiard room and stabling etc.

75 Years Ago

The village of Addingham thronged with crowds of visitors who assembled to pay last respects to the late Lord Masham. He was interred with his wife, who died thirty years previously in the "quiet little churchyard under the shadow of Beamsly Beacon" Lord Masham, or Mr. Samuel Cuncliffe as he was formerly known, had lived in the parish and his family on the Cuncliffe side had for generations resided in the village. The funeral procession travelled from Swinton Castle with many carriages following the hearse through the little town of Masham in deep mourning, and then on to a special train at Masham station watched by hundreds of people from the surrounding countryside. A special train also ran from Bradford laden with rep-

resentative mourners who were marshalled in Addingham Main Street to await the arrival of the Masham train. The funeral service was conducted by the Bishop of Richmond.

Garrett's Empire Traveling Theatre paid a second visit to Ilkley and occupied the Feast Ground behind the Wheatsheaf Hotel over a period of twelve weeks. The pieces were well presented despite the limited stage accommodation and proved popular with Ilkley people. After the last performance the actors, company and friends were the guests of Mr. and Mrs. Morgan of the Wheatsheaf Hotel and enjoyed a substantial dinner, after which the room was cleared for dancing. Mr. H. Craven was at the piano and the M.C. was Mr. J. Holroyd.

50 Years Ago

A fire at Menston Asylum was so severe that the Hospital Fire Brigade and the Leeds Corporation Fire Brigade took several hours to get the blaze under control. Great care had to be taken to prevent the fire spreading to the store rooms above where there were quantities of paraffin, turpentine, beeswax and jars of chemicals.

The L.M.S. Railway company issued a definite denial to rumours regarding the closure of the Ilkley to Skipton Railway line. In a letter to the Ilkley Publicity Association stating that the rumour was quite unfounded they did, however, point out that there was a very much reduced number of people using the service and that they would not be able to maintain an unremunerative service in perpetuity.

25 Years Ago

Supt. H. Green reporting to the Ilkley Road Safety Committee said that dogs were concerned in seven accidents at Ilkley during the month of December, 1955. Four of the dogs had been killed, two injured and one had caused a vehicle to run into a wall. He said only two accidents had been the result of snow and that most incidents had been the result of careless driving.

Expressing the view that there was insufficient demand to justify it, The Clerk to Ilkley Council Mr. B.E. Townsend said Ilkley Council was not willing to support an application to install a television community aerial system in Ilkley. They did however express their willingness to reconsider should the demand be considered sufficient.

In order to create more team spirit, which appeared to be rather lacking in 1955, Addingham Cricket Club wished the teams to wear caps of the same colour. They were said to resemble a "snooker set" rather than a village cricket team. Mr. J. Knight the new Captain, supported the idea, and a navy cap with the letters "A.C.C." embroidered in white was received with the most favour.

6 FEB 1981

EYESORE AT THE GATEWAY TO ILKLEY

Land in Coutances Way alongside the A65 trunk road at Ben Rhydding and the gateway to Ilkley from the east has been described as an eyesore.

Some land in the area which had previously been used for extracting sand and gravel has now been taken over by the Ilkley Angling Association. Negotiations had recently been completed for the purchase of the disused gravel workings which were

to be tidied up and possible repairs carried out to the old weighbridge hut so that it might be used as a store. Fences were to be restored by working parties and the Association hoped to form a special group to manage the area.

Mr. C. H. Scaife said some restoration work to land in that area was required as there was still a certain amount of debris from the old days of the sand and gravel

workings.

"The whole area needs tidying up especially now as they are talking of Ilkley as a centre for tourism," said Mr. Scaife. "As you approach Ilkley from the east, you are confronted with this eyesore," he said.

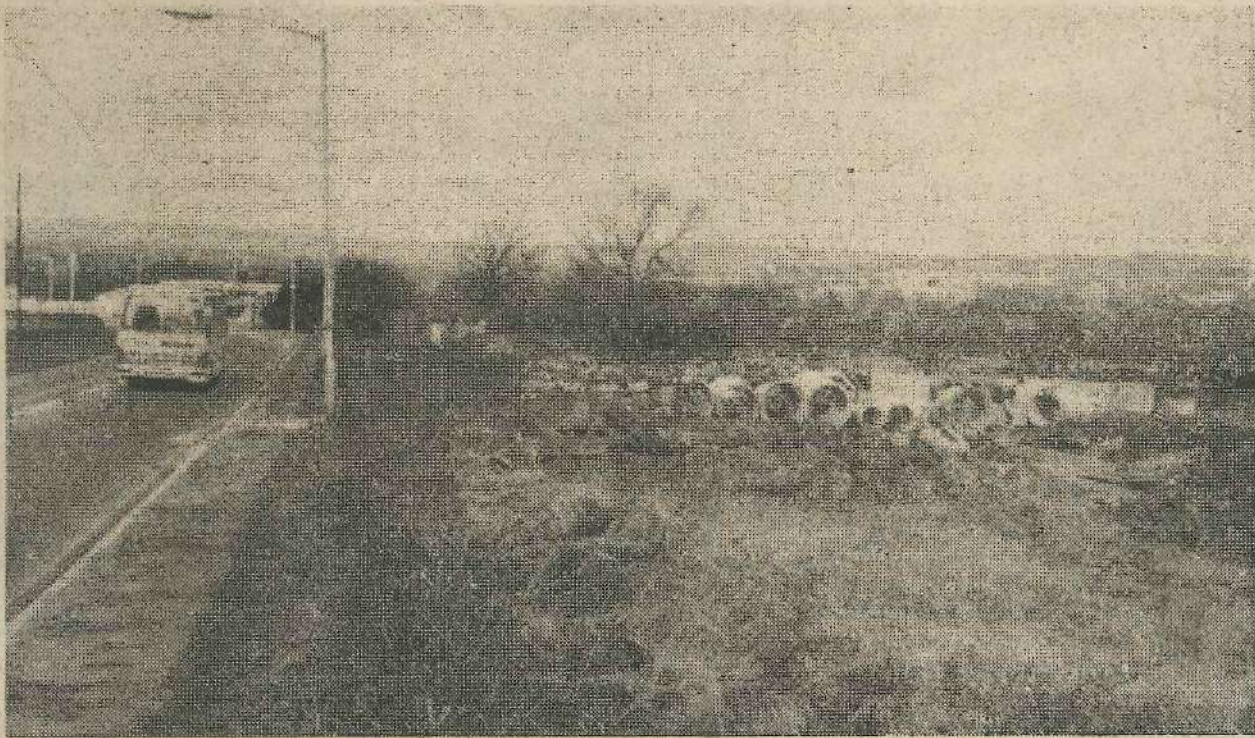
Mr. J. L. Freeman undertook to ascertain what needed doing so that specific proposals could be made.

Secretary to Ilkley Angling Association, Mr. J. A. Cockerill

told the "Gazette" this week that the area described as an eyesore should not be confused with the area taken over by the Angling Association.

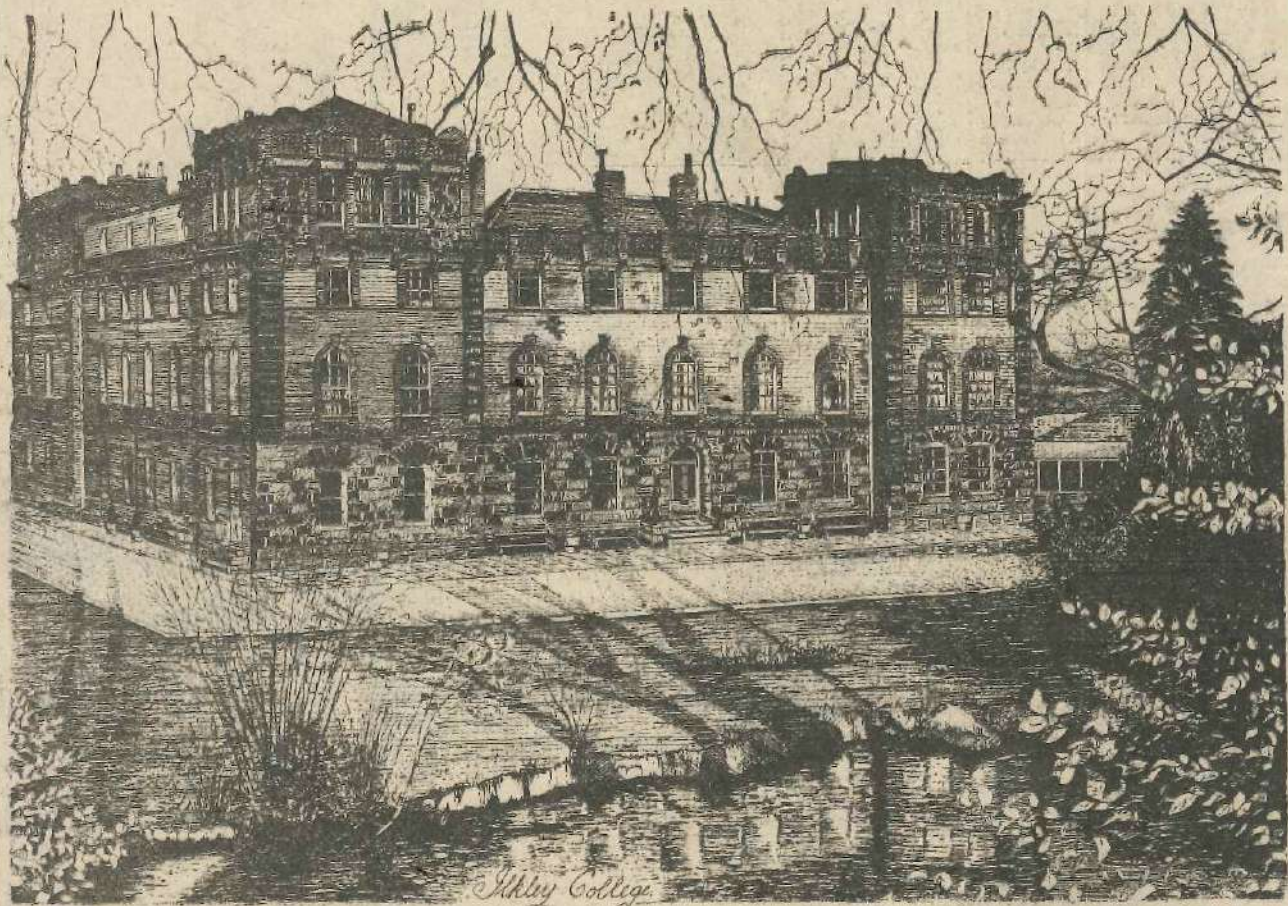
The land described as an eyesore belonged to Bradford Metropolitan District Council and was used as a store for stone and tipping area for waste from the parks department, he said.

• Pictures illustrates part of the land seen by motorists entering Ilkley from Burley.



Hotel With 130 Bedrooms Became Part Of Ilkley College

6 FEB 1981



One of the district's most fashionable hydropathic establishments in the 19th century was Wells House on the edge of Ilkley Moor which is now almost one hundred and twenty five years old.

Today it forms part of Ilkley College but back in the 1850s it was just being completed from a design by the man who was responsible for the building of Leeds Town Hall.

Architect, Cuthbert Brodrick made provision for 130 bedrooms in the building which was to change hands several times before the end of 1930. Known as Wells House, it was bought by Mr. Raymond Swift on 1 January, 1939. He

continued to be known as Wells House.

In September, 1939, at the outbreak of the Second World War, Wells House was requisitioned by the Wool Control and was used as a centre for the finance, statistics and rationing departments until the end of 1946, when it was vacated and bought by a Darlington man, Captain W. Parlour, who purchased the building for

Society of Jesuits. The intention was to use it as a training centre for teachers, but the idea never flourished and as a result, the building stood idle for two and a half years.

It was the Ministry of Labour and National Service who stepped in with a plan to use the building as a hostel for European Volunteer Workers.

Its new lease of life meant the building had to be converted to accommodate 300 women workers, a conversion programme costing £18,200. The American bar of its pre-war hotel days was converted to a reception room, the ground floor rooms were converted to offices and the whole

cream colour. In addition, several new bathrooms and lavatories on the first and second floors were installed, three cooking boilers in the kitchen and a number of gas hotplates were fitted in the dining hall.

The passenger lift, previously long disused, was put in order and the heating apparatus extended so that nearly all bedrooms were supplied with hot and cold water.

The actual date of the building's transition to its present use as a college is vague, but it is known that the first students were admitted in 1952.

Sketch by Bill Pates, of

CASES OVER ILKLEY MOOR PENDING FOR TEN YEARS TO BE HEARD NEXT WEEK

Objections to claims made ten years ago by local farmers for grazing rights over Ilkley Moor will be heard in Bradford next week.

A Commons Commissioner will hear evidence from people claiming rights over the moor and the case by Bradford Metropolitan Council which will be objecting to such rights.

The claims mainly include rights for sheep and cattle grazing but there are others which include digging peat and minerals and for sporting game. They were first registered over ten years ago when at the same time the former Ilkley Urban District Council lodged its objections.

A brief history of the disputes was given by Mr. A. R. Kilner, of the Legal Department of Bradford Metropolitan Council, to Ilkley Parish Councillors at their monthly meeting on Monday night.

The use of common land or village greens developed in feudal times said, Mr. Kilner who added that the use was mainly for grazing and digging peat. In those days there was no recording of those rights and this resulted in many disputes. Ilkley Moor was no exception and there had been disputes over the use of the moor since 1893 when the Local Board purchased the land and passed it on to the succeeding Urban District Council, said Mr. Kilner.

Common Land

The former Ilkley Urban District Council registered themselves as owners of Ilkley Moor and that the land was common land. A number of people also registered rights over the moor and the former Ilkley Urban Council lodged objections to all those rights, said Mr. Kilner.

Commons Commissioners who were dealing with such disputes had now reached this part of the country after ten years and would be sitting in Bradford next week dealing with objections.

"We are thus going back in history to when the registrations and objections were lodged in 1970," said Mr. Kilner.

The functions of the Commissioners were to sit and listen to the evidence given by the people claiming rights over the moor and then for the Commissioners to reach a decision.

The hearing opens in the Central Library, Bradford, on Tuesday when the Commons Commissioner will be Mr. G. T. Hesketh.

The claims, registered over ten years ago, were made by the occupiers of the following farms and properties:- Highfield Farm, Moor Top, Ilkley; Hadfield Farm, Ilkley; Hall Croft, Skipton Road, Ilkley; Rose Farm, Burley Woodhead; York View Farm, Burley Woodhead; Low House Farm, Colston Drive, Burley; Cragg Top Farm, Burley Woodhead; Lumb Ghyll, Addingham and Cragg House Farm, Moorside, Addingham.

Owners of the Moor

Ilkley Moor was owned by the Middleton family in the nineteenth century until 1893 when the land was sold to the Ilkley Local Board. It passed to the ownership of Ilkley Urban District Council and then to Bradford Metropolitan District Council under Local Government Reorganisation in 1974.

There has been a history of difficulties regarding grazing on the moor and other matters and at one time the former Ilkley Urban District Council appointed a committee to be responsible for affairs relating to the moor and parks.

Burley Moor

Claims for rights of use over Burley Moor were also registered over ten years ago as well as objections to these by the owners, a Board of Trustees.

Evidence for and against such claims will be heard at Bradford next week by the Commons Commissioner.

LOW LYING LAND FLOODED

Strong winds and continuous rain on Monday night brought with it flooding to low lying land in the Wharfe Valley.

At Ilkley the River Wharfe burst its banks and "flood" warning signs were erected on the A65 trunk road in Couthances Way but traffic was able to get through. On the north side of the river Denton road was closed and traffic diverted round Middleton.

Parts of Ilkley Golf course were under water and at Ilkley Rugby Club flood water reached the boundary fence. Soccer pitches on the East Holmes field were also threatened but just after nine o'clock the wind and rain had abated the river began to recede as quickly as it had risen during the night and early morning.

Most Important Silver Item Ever Auctioned At Ilkley



Included in the next collective sale to be held in Ilkley by Dacre, Son and Hartley on 18 February is perhaps the most important item of silver ever put up for auction in the town.

It comprises a superbly executed Charles II silver porringer and cover, dated 1679, which was, according to the inscription on the cover, presented in 1681 by Sir Edward Hales to Colonel John Churchill, who later became the First Duke of Marlborough.

The porringer is beautifully decorated with laurel and acanthus leaves and is in particularly fine condition, weighing 29½oz and measuring 8¼in in height. The maker is unknown, although the mark is listed in Jackson (pages 139 and 140).

John Churchill was born in 1650 at the Manor of Ash in Musbury, Devonshire. In 1681, when the silver cup and cover was presented to him, he was

the Right Honourable Sir John Churchill. In 1682 he became Lord Churchill of Eye-mouth, County Berwick. In 1685 he became Baron Churchill of Sandridge. He became Earl of Marlborough in 1689 and Duke of Marlborough in 1702.

As well as other items of fine Georgian silver, the sale includes the usual sections devoted to ceramics, metal-ware, clocks, Georgian, Victorian and Edwardian furniture, and antiquarian books, which include several lots on local history and geography and a particularly fine first edition of Ruskin's "Seven Lamps of Architecture". In addition, and for the first time, is one section of 80 lots devoted to antique woodworking tools, with an extensive range of chisels, saws, drills, gauges and simple and complex planes of all shapes and sizes.

6 FEB 1981

Local Board Sought Reduction Of 20% In Wage Bill

100 Years Ago

As the Local Board's finances were not on a sound footing Mr. Beanlands moved that at the next meeting he would move a resolution "that any paid servant of the Board asking for an increase in salary shall, at the same time, tender his resignation, but that such resignation shall not prevent him competing with others for re-election." He said that the Board was seeking a reduction in their wage bill of 20 per cent as they were in so much debt.

At the meeting of the Burley Local Board, Mr. Thos Taylor, rate collector applied for an increase in his salary of £18, by a further £10 per annum. Mr. Taylor had been employed by the Board for some 24 years.

After a successful run, a soup kitchen was closed in Ilkley. Praise was given to local ladies who had run it with willingness and efficiency, and their services had been greatly appreciated by the many needy people to whom the soup kitchen had been a great boon.

75 Years Ago

The first annual meeting of the subscribers and supporters of the Ilkley Coronation Cottage Hospital took place in the Council Chamber with Mr. B. Nussey presiding.

In the hon. secretary's report, Mr. G. Priestman said the former Ilkley District Nurse, Nurse Box had been appointed matron. The number of patients treated in eight months since the opening was 33, with each patient staying an average of 16 days. Nine of these were with each patient staying an average of 16 days. Nine of these were private cases, five surgical cases and a further 14 medical cases. Five patients unfortunately had died. In addition an average of eight out-patients a day had received treatment.

Captain Aykroyd, in connection with the Ilkley Company of the 2nd West Yorkshire Royal Engineer Volunteers, organised a free gymnasium class for all interested, which took place in the Pavilion at the Bridge Pleasure Grounds.

Wolverhampton Wanderers' Football team were using Ilkley as a training-ground prior to a match against Bradford City, making the Lister's Arms Hotel their headquarters.

50 Years Ago

Ilkley Gliding Club looked ahead with enthusiasm to the 1931 season. They had already made approximately 500 flights in the glider they purchased the previous year. They were completing the construction of a Dixon type glider which they hoped would be

ready for the opening of the new season at Easter. A camp was planned for training at Easter weekend prior to giving public demonstrations at Whitsuntide. The club had a membership of between 70 and 80 people.

Proposals from the Medical Officer of Health for Ilkley, Dr. H. T. Bates, were put before Ilkley Urban District Council to combat the recurrence of serious outbreaks of diphtheria in the district. During the year 1929-1930 there were 146 cases of which there were seven deaths. Dr. Bates therefore proposed a vaccination programme for local schoolchildren, and after a lengthy discussion the Council agreed to co-operate with this scheme.

25 Years Ago

Addingham Parish Council wrote to Skipton Rural Council insisting that the tip at Addingham be cleaned, levelled and any broken walls and fences repaired. Skipton Council considered the cost of levelling, estimated at around £400, was too much. They did however, agree to tidy the tip up, and repair the boundary walls and fences.

The door of a 17th Century Manor House in the grounds of Otley Golf Club was considered for use in connection with the restoration of the old Manor House in Castle Yard, Ilkley. Miss E. Fletcher the Curator of the Ilkley Museum requested the surveyor to inspect the door.

Persistent rumours that the Essoldo Cinema had been sold to a well known multiple store were officially scotched. The Gazette was told the owners had no intention whatsoever of selling the cinema, nor had they ever contemplated taking such action.

CAR EMERGES AFTER 35 YEARS IN '35 FEB 1981 BEN RHYDDING GARAGE

A saloon car, which had rested on bricks in a garage at the large Victorian detached house, "Ryhill" in Margerison Road, Ben Rhydding for the past thirty five years was on the move again on Tuesday.

Morris Isis JN 50 required very little attention to be restored to running order after its owner Miss Mary Booth died recently. She had lived with her bachelor brother, Mr. Harry Booth, who died in 1979.

Workmen called to clear the contents of the house and garage found the saloon car in a remarkably good condition. The four door, black and navy blue coloured car had a six cylinder engine, running boards and carried a spare wheel on the outside. After some attention everything on it appear to work, including the windscreen wipers, lights and trafficators.

Mr. Jack Twine, of Pool-in-Wharfedale, now retired, drove the car out of the garage. He had once worked on the assembly line of the Morris Isis car at the Morris Cowley factory and was delighted to put the car back into running order.

It required very little attention and started almost at once. The tank still contained several gallons of petrol, which had to be drained off because it had deteriorated over the years, said Mr. Twine. There was even air in the tyres he said.

Mr. Twine recalled that many of those models were exported, and Mr. John Hardy

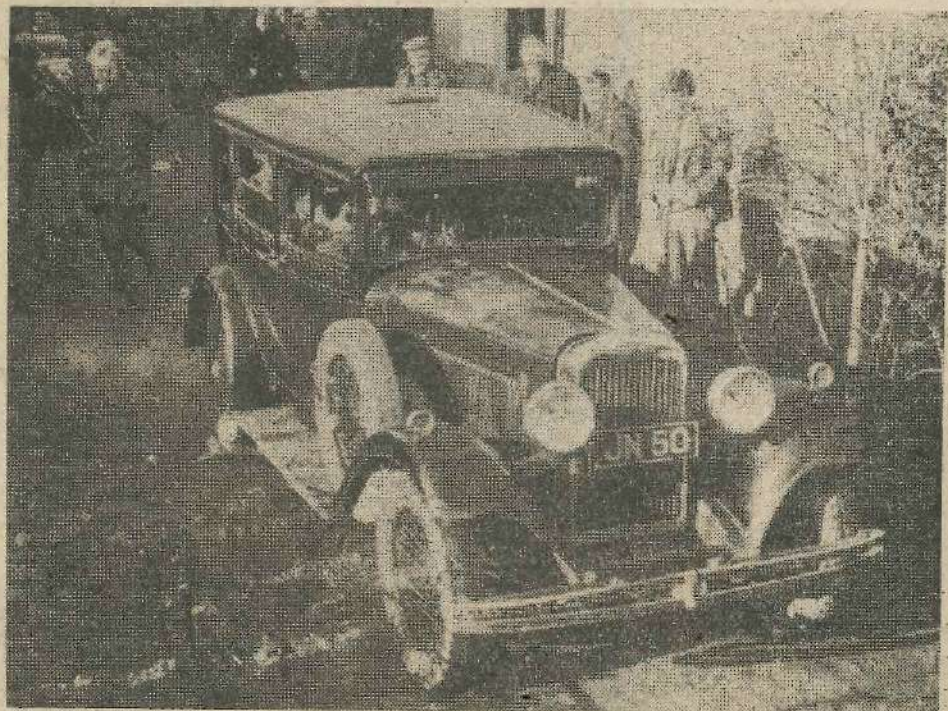
for the estate agents Hepper Watson and Sons, Ilkley, appointed to dispose of the property, believed the car to be rare and probably worth about £5,000 to £6,000.

After putting fresh petrol in and connecting a second hand battery the car roared into life, said Mr. Twine. There was even the 1930 handbook and an AA handbook for 1940 in the car, together with spare bulbs and an original tool set.

Mr. Twine said, "we built cars to last in those days. There's hardly a speck of rust on it and I reckon its good for another thirty-five years".

The journey on Tuesday was to a low loader vehicle parked at the end of the drive to the house. It was then conveyed to the salerooms of fine art auctioneers, Phillips, of Leeds where it is to be auctioned in March.

When workers entered the house at the beginning of this year they faced a formidable task, for every room and passageway was piled high with 25,000 books, hundreds of newspapers, parcels, 300 pairs of shoes, and many boxes of food. So massive was the operation to clear the contents that after a fortnight's work nine skips, 500 refuse bags and five Council lorries had been filled.



Saloon car Morris Isis JN 50 which had rested on bricks in a garage at "Ryhill", Margerison Road, Ben Rhydding, for the past thirty five years left "Ryhill" for the last

HEARING ADJOURNED SO FARMERS AND COUNCIL CAN REACH COMPROMISE OVER MOOR GRAZING

Objections by Bradford Metropolitan Council to claims made ten years ago by local farmers for grazing rights on Ilkley Moor were heard by a Commons Commissioner at Bradford on Tuesday.

After hearing both sides of the argument, the Commissioner, Mr. George Hesketh, adjourned the hearing so that all parties involved could try to reach a compromise.

Mr. John Collins, appearing for the Metropolitan Council, said the existence of the world famous Ilkley Moor was being threatened by overgrazing by sheep.

He said the moor was formerly a fine example of a heather moor, but that had since died and the moor had been invaded by bracken due to overgrazing, particularly in the past twenty years.

The hearing, held at Bradford Central Library, was into the claims of nine local farmers to sheepgrazing rights on over 2,900 acres of Ilkley and Burley Moors.

The claims were first lodged ten years ago, when the former Ilkley Urban District Council objected, Bradford Council had claimed ownership of the moor since local government re-organisation in 1974. The use of the moor had been disputed since 1893, when the Middleton family sold the land to the Ilkley Local Board, who passed it on to the succeeding Ilkley Urban Council.

Mr. Collins said Bradford Council was concerned to preserve Ilkley Moor, which was part of the country's heritage. For many years people had used the moorland for recreation.

"Grazed to Death"

"There is a grave danger that unless some sort of limitation is put on the number of sheep allowed to graze on the land, then Ilkley Moor and Burley Moor will be grazed to death", he said. "There is an indication that this is happening, and may have already happened."

Five farmers claimed grazing rights for Burley Moor and four for Ilkley Moor. They claimed for a total of 2,620 sheep, although the council said the land could only support 700.

Mr. Collins said Burley Moor was now privately owned but the same considerations applied because sheep did not recognise the boundaries between one moor and the next.

The claims being heard were from Mr. Geoffrey Rowson, of Rose Farm, Burley Woodhead; Mrs. Amy Lloyd, of York View Farm, Burley Woodhead; Mr. Frank Fawcitt, of Low House Farm, Burley Woodhead; Mr. William Ellis, of Hall Croft, Skipton Road, Ilkley; Mr. David Ellis, of Crag House Farm, Moorside, Addingham; Mr. George Greaves, of Crag Top Farm, Burley Woodhead; and Mr. Bernard Greaves, of Hag Farm, Burley Woodhead.

The hearing heard that one farmer who had claimed grazing rights ten years ago had since died, while another had sold his farm to a buyer who only kept horses.

Only one farmer, Mr. Rowson, gave evidence. He said he had a seventy acre farm and wanted to graze 200 sheep on Burley Moor. He had a mixed farm, rearing sheep and cattle, and growing some cereals and hay.

Hardship

Mr. Hesketh said he would adjourn the hearing because he felt that while Bradford Council were acting properly in wanting to preserve the

moor, considerable hardship would be caused if farmers were prevented from grazing their sheep. He adjourned the hearing so that the parties concerned could reach a compromise on the number of sheep which could graze on the moor. If no compromise was reached the matter would be decided at another hearing, he added.

A brief history of the dispute was given to the February meeting of Ilkley Parish Council by Mr. A. R. Kilner of the Legal Department of Bradford Metropolitan Council.

He said the use of common land or village greens developed in feudal times, mainly for grazing and the digging of peat. In those days there was no recording of these rights, and this resulted in many disputes.

Ilkley Moor was no exception, and there had been disputes over its use since the Ilkley Local Board purchased the land in 1893. Ilkley Urban Council had registered themselves as owners of Ilkley Moor and that the land was common land, but at the same time a number of people had registered rights over the moor.

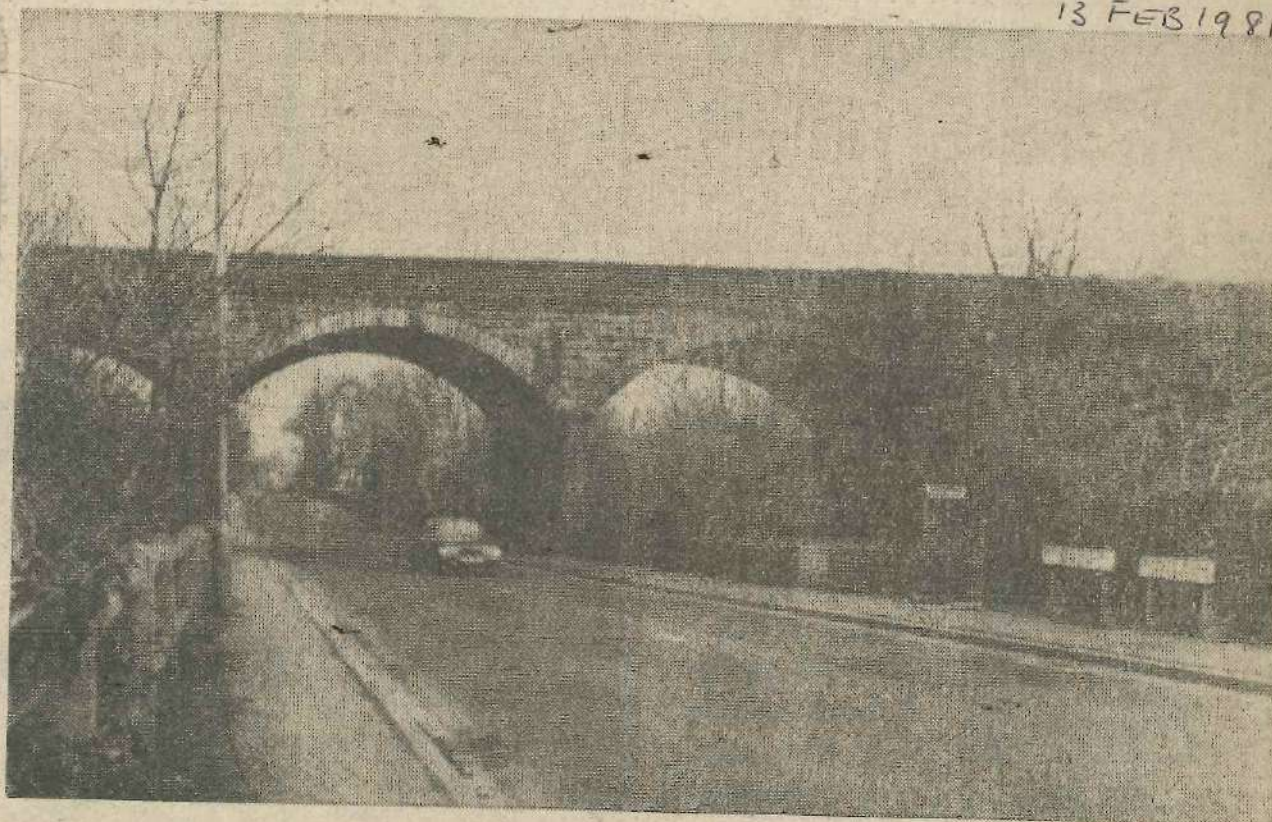
The Commons Commissioners who were dealing with such disputes had now reached this part of the country after ten years, said Mr. Kilner.

There had been a history of difficulties over grazing rights to Ilkley Moor, and other matters, and at one time the Ilkley Urban Council appointed a committee responsible for affairs relating to the moors and parks.

Claims for the rights to use Burley Moors were also registered ten years ago, as well as objections to these by the owners, a Board of Trustees.

Dangerous Burley bridge would cost £50,000 to demolish

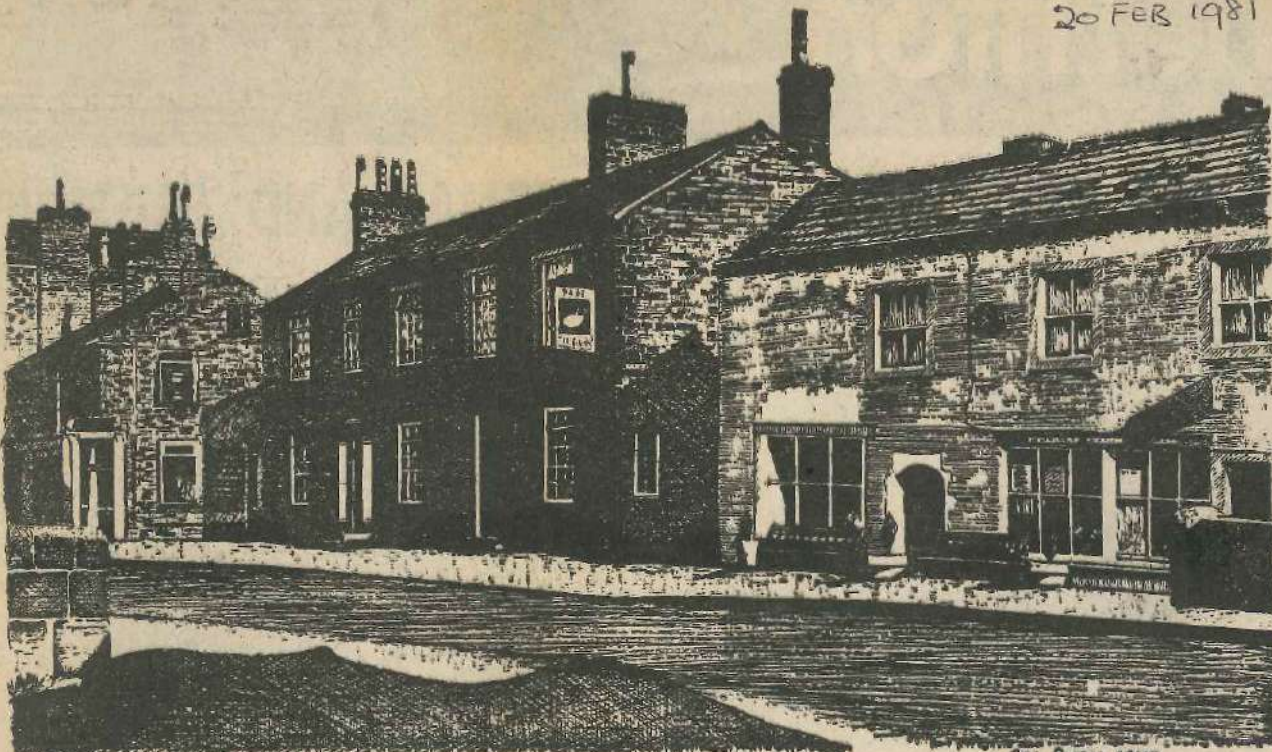
13 FEB 1981



It may cost ratepayers £50,000 to demolish this old railway bridge in Bradford Road, Burley-in-Wharfedale. Bradford Metropolitan Council are to discuss whether the bridge should be demolished or whether brickwork should be grouted to prevent water pouring through. It was the water turning to ice which caused the question of the bridge to be raised at a meeting of Ilkley Road Safety Committee. The water formed huge icicles under the bridge and many considered these to be a great danger both to traffic and pedestrians. Loose bricks have already been moved from the bridge to make it safe for the winter. There were two bridges crossing the road at this point at one time but the other bridge was demolished several years ago.

Historic Buildings In Centre Of Addingham

20 FEB 1981



THE SWAY, ADDINGHAM.

Bill Pates 1978.

Although the history of the Swan Inn, Main Street, Addingham dates back to the early 19th century, it is rather historically overshadowed by its neighbouring building, the "Old School" which is 315 years old this year.

Evidence suggests the Swan Inn was built about 160 years ago along with most of the other hotels in Addingham at the time when the woollen trade was really beginning to "take off" in the village. Traders and travellers came to the village and needed places to stay, and the Swan Inn was built to cater for their needs — offering them rest and refreshment.

This boom in the woollen trade and its subsequent effects on the village's population probably accounts for the number of public houses in relation to the size of the village in Addingham today.

At about the time the Swan Inn appeared, the "Old School" building was the Parish School and had been since it was built in 1666. It remained a Parish School until the early 1860's, maintained by the parish officers, who appointed the schoolmasters and usually combined their role with that of parish clerk.

According to historical records, a Mr. Lee was the last teacher in charge of it, being removed to the new church school at the bottom of the village around 1844. The Rector of the village then became the sole manager until it was taken over by Mr. Richard Sandham on New Year's Day, 1855. During the time he owned the Church School (it was maintained as an infant's school until 1892) the building comprised a village prison and an infant classroom on the same floor. The upper room was occupied by a joiner, Edward Lister,

while a nail maker and a barber also went about their businesses in the same building.

In 1900, the building was let in three tenancies, the Parish Council having the upper room, the Conservative Club the lower and a tradesman occupied the room adjoining.

The Conservative Club moved out of the building to their present premises in 1912, after which a new sweet shop and a barber's room continued until the time of the Second World War. Before the outbreak of the war the present library was established in the building. The "Old School" building is now owned by Addingham Parish Council, who rent out the ground floor to the library.

The most recent addition to the building is a clock, seen clearly on the face of the building in the sketch, presented as a gift in 1977 by a person who wished to remain anonymous.

The seventeenth century listed building is at the moment undergoing extensive essential repairs at a cost of about £4,750.

Sketch by Bill Pates of Addingham.

ACROSS THE YEARS

20 FEB 81

POOR ATTENDANCES AT LOCAL SCHOOLS

100 Years Ago

Poor attendance figures at the local schools were discussed at a meeting of the School Board, and were put down to the inclement weather and the inability of some parents to pay their children's school fees. Out of 461 children on the register, the average attendance was only 297.

An Ilkley grocer, was taken before a full bench of magistrates at Otley Police Court and charged with infringing the Contagious Diseases (Animals) Act. He had driven a cow on the highway without having previously procured the necessary licence to remove cattle within an area declared to be infested with foot and mouth disease. Apparently he had driven the beast across Robinson's Yard in Cowpasture Road to the water trough and did not think he was doing wrong. He was advised to be more careful in the future and after great deliberation the Bench dismissed the summons.

75 Years Ago

Great secrecy was observed when bodies were removed from the burial ground of the Lodge Chapel, Middleton, of members of the Middleton family and of some of their retainers. The Lodge was no longer in the occupation of the Middleton family and the Chapel in 1906 had no existence as such and permission had been sought to remove the remains of those interred in the grounds to Ilkley

cemetery. The re-interment took place about midnight and although a few outsiders were aware of the fact, there were only two people present in addition to those immediately concerned and the police. Some of the remains had to be put into new coffins before removal which delayed the proceedings. Father Gall officiated and recited suitable burial sentences. Mr. J. W. Dixon, Chairman of Ilkley District Council was present, Mr. Frank Hall, Clerk to the Council, Mr. George Hatch, cemetery curator, and other officials including a family solicitor.

The Ilkley District Council proposed to have medallion representations of the features and bust of Robert Collyer and Mr. Carnegie placed in front of the new library, and Mr. Gilbert Walker was to undertake the work.

50 Years Ago

The Duchess of York, now Queen Elizabeth the Queen Mother, whilst touring the British Industries Fair with the Queen, the Duke of York, and the Duke of Gloucester admired a stand entitled "Susan's Cupboard" organised by Miss Maud, Miss Perkin and Mr. J. N. Maud of Ilkley.

The exhibits consisted mainly of decorated woodware and poker work, largely the work of Miss Perkin, but the sign writers had made a mistake in the spelling of Ilkley and it read "Ilkney, Yorkshire". The Duchess immediately noticed the mistake and said "Surely, that ought to be Ilkley, the place made famous by the song about a man without a hat." The Royal party spent some considerable time at the stand and Queen Mary purchased a money box which had been made at Ilkley.

Gorgeous period costumes were worn at the Leeds Arts Ball by members of a party taken by Mrs. Stawell Cross from Ilkley. Mrs. Cross and Miss Diana Arnold Förster were in pompadour gowns, Miss Betty Hill wore a Russian gown, Mr. Doughty had a Georgian costume, Commander Cross was a Harlequin and Mr. Dick Hollins a Torreador.

25 Years Ago

The 1st Ben Rhydding Scout Group was to celebrate its silver jubilee by holding a dance in the Kings Hall and Annex, at which it was hoped three founder members would attend.

The group met in February 1931, and the first group scoutmaster, Mr. Jack Woodman, originally trained three boys as the basis of his troop, and until they were ready he allowed no other boys to enter. They were Dan Reynolds, Harold Dolby, and Mike Bowling. The group originally met under the sponsorship of the Ben Rhydding Church and chapel, then move to a barn in the grounds of the Hydro. In 1935 an appeal was launched to build a new hut, and within a year funds had been raised and a hut erected on ground adjacent to Ben Rhydding railway station. In 1933 Mr. R. Ibbetson was appointed as Scoutmaster, and in 1946 was made Group Scoutmaster. The pre-war years marked a good period with over 40 scouts. Following the war, the group was at a low ebb, with lack of money, leaders, and the headquarters needing repairs. In 1947 the hostel at Hag Dyke on Great Whenside was acquired and the group numbered 120 with two cub packs and over 40 scouts.

In 25 years about 1,000 boys had passed through the 1st Ben Rhydding Scouts, taking some part of the Scout training into life with them.

A meeting of interested persons held in the Ilkley Council Chamber decided that an Old Folks' Club should be formed in the town. Mr. J. R. Broadley chaired the meeting, and there were representatives from all the town's leading associations who formed an Executive Committee.

27 FEB 1981

BEN RHYDDING HOUSE

CONTENTS IN SERIES OF SALES

The contents of the house known as Ryhill, Margerison Road, Ben Rhydding, the home of the late Miss Mary Booth, are to be included in a series of sales at the salerooms of Messrs. Phillips in Leeds over the next two or three months.

Later in the Spring there is to be a special two day sale — comprised entirely of the more valuable items discovered during the clearance of the house.

Some of the effects, including a series of ladies dresses and other items of costumery dating from the Victorian period as well as the 1920's and 1930's, are to be offered for sale next Wednesday, 4 March. Perhaps the most interesting item of all is a magnificent four piece white satin wedding dress which was discovered in one of the very many cabin trunks in Ryhill.

The dress was most carefully packed in the trunk and looked as if it had never been moved out of it since the Booth family entered into occupation at Ryhill in 1930.

During the clearance of the house, Mrs. Anne Hardy, wife of Mr. John Hardy of Hepper Watson & Sons, the Estate Agents charged with the task of emptying the house, came across a wedding photograph of Mr. and Mrs. H. B. Booth, the parents of the late Miss Mary Booth. Mrs. Hardy said

"I was thrilled to discover that when I compared the photograph with the dress it became clear that it was indeed the one worn by Miss Booth's mother at her wedding in Wanstead, London, in 1903. The dress is in remarkably good condition, and is of a very high quality and it bears the label of Hitchcock, Williams & Co., of London."

Included in the sale is a woolwork picture of a Hunting scene which was worked by Miss Mary Booth's grandmother and bears the label "Worked by Sarah Booth (nee Blamires) in 1846 aged 16, in Bradford, Yorks". Other items include decorative fans, parasols, Victorian shawls and jackets, and 1920's style dresses. One interesting lot is of 11 pairs of early 20th century ladies dress gloves and 20 pairs of silk stockings. Finally, there are several lots of most interesting 1930's fashion and dressmaking magazines.

The 1930 Morris Isis Six Motor Car, which was also discovered by Hepper Watson & Sons during the clearance of Ryhill, will be offered for sale in Leeds on 16 March.

27 FEB 1981

Ilkley Had Many Squalid And Uneven Streets

100 Years Ago

Ilkley was still dealing with many squalid and uneven private streets and creating many building sites of rubble in 1880. The Local Board hoped that the town which "had everything requisite to command abundant patronage would in time impress the visitors." Improvements had been made to the water and sewage schemes despite a depression which existed at that time.

A grand entertainment was held in Burley Lecture Hall to inaugurate the Jolly Jack Coffee Tavern recently opened in the village which Arnold-Forster, the object had been the idea of Mrs. being that the young men of the village could meet over coffee and not frequent the public houses.

75 Years Ago

Ilkley Education sub-committee, adopted a resolution to be sent to the West Riding County Council for the provision of an elementary day-school at Ben Rhydding to accommodate 120 scholars. It was stated the cost would be approximately £1,790, and if half this was met by the county the cost to Ilkley ratepayers would not be more than a farthing in the pound. The Ilkley National schools were over-crowded and the only alternative at that time was for the Ben Rhydding children to cross the river and go to Denton.

Ilkley Rugby Union Football Club was in the proud position of having three of its members playing in the county team. They were T. E. Steinhil, J. E. Ingham and T. Ambler. They were taking part in a Yorkshire tour of South Wales.

50 Years Ago

A well known Wharfedale Liberal, Mr. R. C. Denby, of Burley-in-Wharfedale, was invited to stand as the Liberal Candidate in the Skipton Division. Mr. Denby served on Bradford City Council for three years as Liberal representative and was the President of the Burley Liberal Club.

Thipping and Lee Ltd., estate agents, advertised houses on two large Ilkley estates. The Leeds Road estate offered modern "semi-detached houses of distinction" with two reception rooms and three bedrooms at £490 with a 90 percent mortgage available. The Boling Road estate offered semi detached houses "of unique architecture" with large gardens and garages, painted decorated and ready for occupation, price £725 with a 90 percent mortgage.

27 FEB 81

Addingham's Old School Presents A New Face



Addingham's historic Old School building in Main Street is presenting a new face to the village since workmen removed the rendering from its front wall and exposed the more attractive stonework underneath.

The parish council, who bought the former school in 1974, were so impressed with its new appearance that they are investigating the possibility of leaving the stone uncovered.

The rendering was stripped off as part of a £4,750 repair and renovation project, and the original intention was to re-render it to make it water-proof.

Mrs. E. L. Best, Clerk to the parish council, said the building was rendered years ago when it was still in the

possession of the parish church. When it was stripped the reason for it being rendered became apparent—the building was constructed of the softest, most porous sandstone and the rendering was to protect the stone and make it water-proof.

"It looked so nice that the parish council stopped the workmen re-rendering it and we are now investigating whether it can be repaired and pointed instead," said Mrs. Best. "If this is possible and the cost is not too bad the whole building will probably be stripped, but otherwise it will just be the front wall," she continued.

Unfortunately, the date 1669 above the doorway was damaged while the work

being carried out, but Mrs. Best said this would be restored, possibly by re-cutting.

Mrs. Best stressed that the extensive repair and restoration was urgently needed to stop the Old School being a danger to the public and possibly having to be demolished in the near future. The parish council had tried to obtain grants from various organisations towards the cost but were told the old school, a listed building, was not of sufficient historical interest. "If someone had been hanged there or if a Queen had slept there it might have been different," she added.

One of the two doorways on the ground floor, occupied

been half walled and a window set in, and it was hoped that the other door could be made wide enough to take wheelchairs, but this had not proved possible.

Major repair work had involved one of the main beams in the library, which had been coming away from the wall, repairs to the roof, making the chimney stack safe and fixing large cracks in the walls caused by vibrations from heavy traffic. New guttering was being installed, ventilation improved and the building had been rewired, said Mrs. Best.

In addition, the map chest in the parish council's room upstairs was being extended to accept the long, old Ordnance maps in the possession

25 Years Ago

For eleven successive days Ilkley had a period of snow-falls. On each night there had been a keen frost and nine o'clock morning temperatures were well below freezing. However conditions were not nearly as severe as those experienced in many other parts of the county.

Ilkley and District Education Committee was to ask the headmaster of the Ilkley Evening Institute to try to bring about some form of economy at his evening classes in the use of electricity. Concern had been expressed over the electricity accounts for the C. of E. Junior Mixed School and the Ilkley County Infants School. Upon checking the reason for the high bills was found to be the usage for evening classes.

27 FEB 1981

GRAVE CONCERN AS PROPOSED

RATES FOR 1981-82

EXCEEDS LEVEL OF INFLATION

Grave concern over proposals by Bradford Metropolitan Council to increase rates for 1981-82 by more than the level of inflation has been expressed this week by Ilkley Councillors.

Their views, along with those of local Ratepayer Action Groups, will be presented to the Metropolitan Council when it meets on Tuesday to fix the rates.

The Metropolitan Council's Management Committee will recommend the Council to approve a rate rise of 20.2 per cent for householders and 17.2 per cent for industry. Bradford's own levy is proposed at 118.5p in the pound, an increase of 35.6 per cent but the County precept has dropped by 25 per cent to give Bradford a total rate bill of 146.6p for industry and commerce. For householders the recommended rate is 138.1p.

At the meeting of the General Purposes Committee of Ilkley Parish Council on Monday Cr. C. D. Poole said Parish Councillors ought to have concerned themselves with the rates before now. Rate support grants could help to reduce rates but there was no way yet the Government could prevent Local Authorities from continuing to increase rates, said Cr. Poole.

Strong Protest

He felt the Council should be recommended to make a strong protest over Bradford putting up the rates unnecessarily. A proposed rate increase of 20.2 per cent was above the rate of inflation, said Cr. Poole.

Cr. F. G. Lambert said ratepayers' associations were strongly objecting to Bradford "and we should say that the rate increase should not exceed the rate of inflation."

If Bradford lost Government subsidies, as it had done in some cases, then the rate increases were bound to be above the rate of inflation, said Cr. J. M. Shelton. They were a little late in the day discussing it now because the rate had virtually been fixed, said Cr. Shelton.

Private industry was expected to become more efficient and competitive so there was even a bigger onus on local councils to become more efficient and use its existing labour to better advantage, said Cr. Shelton.

"They must realise the country is getting poorer," said Cr. Lambert. "The biggest problem is the increase to industry. Bradford is going downhill and a place like Ilkley is going to have to bail them out," said Cr. Lambert.

Cr. Peter Williams said they should be making constructive comments on how cuts could be made instead of people going about with banners saying out this and that.

If Bradford Metropolitan Council told them in detail what they were spending money on they could make constructive comments but Bradford would not, commented Cr. Poole. They said

nothing about improving efficiency but poor old private enterprise, which funded the local authority, was going downhill he said.

Firms Closing

"Firms are closing down every day but there is no sign of Bradford Metropolitan Council reducing its staff even by one," said Cr. Poole. "In this day and age they ought to be prepared to make some reductions in services," he said.

"I understand the policy is not to replace people who leave or retire," said Cr. Mrs. M. Renton.

Cr. Shelton said he would be asking questions about the Council's manpower when the leader of Bradford Metropolitan Council made his annual visit to the Parish Council. The first priority of Bradford Metropolitan Council seemed to be to maintain the employment levels, he said.

Cr. Mrs. Renton said she would be interested to know why the Council had stopped having published Councillors' claims for attendance at meetings. There had been a lot in the newspapers about councillors getting these costs, said Cr. Mrs. Renton who went on to say that it might only be a drop in the ocean but it would at least show they were looking at such items.

Cr. Shelton proposed that the Parish Council be recommended to ask Bradford Metropolitan Council to reconsider the proposed rate increases, make the necessary reductions and not impose unnecessary burdens on the district.

The proposal was accepted by the Committee.

For the first time rates due to the Yorkshire Water Authority will be paid separately.

Councillors argued that this would mean an extra burden on ratepayers by only being able to pay the rate in two instalments but it was pointed out that water rates could be paid quarterly if arrangements were made with the authority.

ILKLEY STORE QUICKLY RE-OPENS AFTER £200,000 BLAZE

27 FEB 1981

The quick re-opening of Hillards Ilkley store yesterday (Thursday), only a week after a disastrous £200,000 fire had been made possible by the staff, contractors, Ilkley people and organisations, Managing Director Mr. Peter Hartley told the "Ilkley Gazette".

Mr. Hartley paid tribute to the staff and contractors, who had virtually worked around the clock to make the opening possible. Many Ilkley people and organisations had also given help and assistance, he said.

The upstairs freezer department had been re-opened at the same time, with all the fire damaged equipment replaced. The store would be operating at almost 100 per cent, but one of the problems had been getting new stock in, said Mr. Hartley.

Today (Friday) the store will be open until 6.00 p.m., and tomorrow from 9.00 a.m. until 4.30 p.m. It is hoped to start operating normal opening hours next week.

The fire caused damage to the upper floor and stock estimated at £200,000.

Over thirty firemen, some with breathing apparatus, fought the fire which broke out at Hillards last Wednesday evening. Staff ushered customers out of the store to safety when the blaze was discovered on the first floor.

The fire badly affected the warehouse, which contained stocks of groceries, and the adjoining newly opened ad-

ministration block, where it was believed the fire started. The tremendous heat damaged a steel frame which supported the building, and the roof was gutted.

Damage to stock was caused mainly by heat and smoke, and by the water used to extinguish the blaze. Refrigerators in the warehouse were also badly damaged.

The fire was confined to the first floor, largely due to the efforts of some of the twenty to thirty members of staff on duty, who fought the blaze with extinguishers before the fire brigade arrived and who closed the fire doors.

CHARGED WITH CAUSING FIRE

Kenneth James Dyce Shand (21), of Moorvale, Station Road, Burley was remanded on unconditional bail to 20 March when he appeared at Keighley Court, yesterday (Thursday) charged with destroying or damaging by fire Hillards Supermarket and goods therein at Railway Road, Ilkley, to the value of £160,000 on Wednesday, 18 February.

PLANNERS TO VISIT ILKLEY BEFORE DECIDING ON FUTURE OF DERELICT SITE

27 FEB 1981

Members of Bradford Metropolitan District Council's Planning Panel are to visit and inspect a site in Castle Road, Ilkley, before deciding on a proposal to build seven houses there.

Last Wednesday's meeting of the Panel was told that Ilkley Civic Society was opposed to the scheme and Ilkley Parish Council thought it inappropriate.

Mr. John Steel, Principal Planning Officer, told the meeting that the site, close to the corner with New Brook

Street, once had old wooden garages on it. The Civic Society described it as a prime site and was opposed to the proposed development of "a block of Scandinavian warehouse-type flats." Ilkley Parish Council had expressed its concern at the height of the buildings.

The former wooden garages on the site were the workshops of Chambers Bros., car body builders, which were erected in 1921 and served until their demolition in September 1976. The firm closed

down in 1976 and the empty buildings had to be demolished or repaired on the orders of Bradford Metropolitan Council because of their poor state.

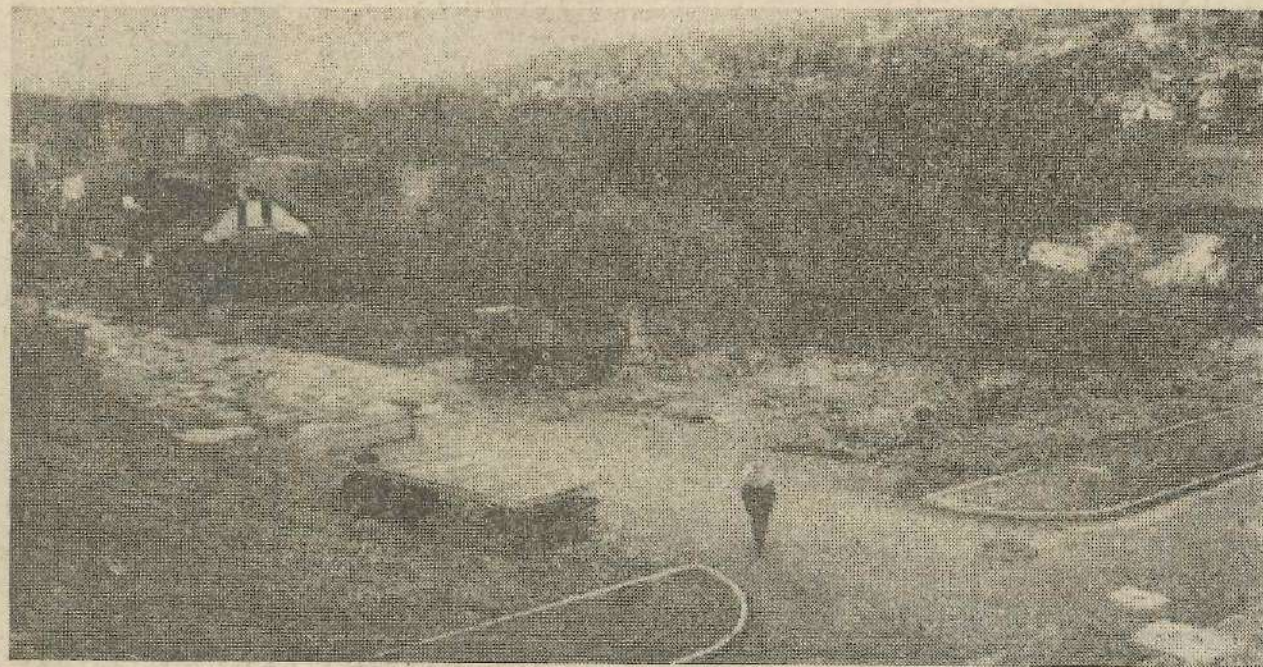
The burnt-out bungalow on the site also belonged to the Chambers family, and was in the process of being sold when it was extensively damaged by fire in December 1977.

The whole area has long been regarded as an eyesore which greets visitors to Ilkley on their way to the riverside

recreational facilities. A suggestion was made to Ilkley Parish Council last November that Castle Road could be used to provide car parking space to replace spaces lost to further parking restrictions.

It was felt that if residents of the Middleton side parked on Castle Road they would not add to the congestion of the busier parts of Ilkley.

A further suggestion was that the area be incorporated into the riverside gardens.



Long Awaited Improvement To Lighting Through Addingham

6 MAR 1981



Long awaited improvements to the lighting through Addingham's Main Street are now being carried out by the county council, acting as agents for the Department of Transport.

Addingham Parish Council has for many years been pressing for improvement to the lighting, which is only classed as footway lighting and is not of the much higher standard required for a trunk road. The problem has been a constant headache to them, but the feeling was always that the Department did not want to upgrade the lighting when there was the possibility of an Addingham By-Pass being built.

The parish council made some minor improvements while they were the street lighting authority, and when the county council took over that function they installed sodium lamps which increased the light output. How-

ever, the lighting was still only to footway standard and was often described as "abysmal".

When new housing estates were built in the village the developers were required to provide adequate street lighting, which made the estate roads much better illuminated than Main Street and highlighted the problem even more.

The new scheme, which will bring the lighting up to trunk road standard, was put forward by the Department of Transport in December last year. The Department will meet the estimated £15,000 cost of providing the 41 eight metre columns with 250w high pressure sodium lanterns.

The columns are all expected to be installed within the next two or three weeks, but then completion will depend on the Yorkshire Electricity Board's servicing.

Church That Nearly Slipped Down The Hill Still There 100 Years Later

A proposal for the erection of a church on the site of present-day Saint Margaret's Church, Ilkley, met with some doubt from residents when it was first put forward just over 100 years ago.

Some contended that no church could be built on the site without being hidden by the moor and others thought a church on the site would slip down the hill. Indeed, the latter objection was nearly justified later but difficulties were overcome by the architectural skill of Mr. Norman Shaw, R.A., who erected the present building between 1878 and 1879 to seat over one thousand worshippers, and it was his design that secured his admission to the Royal Academy.

Doubts about the appearance of the church in respect of blending with the moors were soon dispelled, with one resident commenting: "Only the bell-cote breaks the calm flatness, blending with the serenity of the landscape."

The foundation stone was laid by the Earl of Wharcliffe on 1 May, 1878—in the North West

corner, not the traditional North East corner.

The church, built in a Gothic flat-roofed style, was consecrated on 10 September, 1879, by the Bishop of Ripon, Dr. Bickersteth. The work and worry had undermined the health of the Rev. William Danks, who was reluctantly obliged to resign.

The debt for the church building, with interest and small endowment, increased to £15,000 and was not finally extinguished until the 6 February, 1886. The means of raising the money depended on local zeal and generosity for no money was made available by Church Building Societies.

A total sum of £4,000 was given in donations and when it is considered that no single donation exceeded £100 it is plain to see everyone was concerned in the venture. Three sales of work together raised £4,800 and collections in church raised £1,700. The remainder was raised through Collecting Cards.

In 1887 the church had to be refloored with 400 square yards of oak blocks, which cost £360, and between 1890 and 1908 numerous additions to the church were made. They included eight new windows costing a total of £2,000 an organ, a central screen, two bells, sanctuary hangings and carpet, altar cross and candlesticks, an entrance door screen, a pulpit, a new furnace, and railing. The Lady Chapel was also made, comprising two screens, panelling, altar and frontals, a lectern, desk and other furnishings. All these additions had to be paid for with the generous donations of the public, the total cost requiring a sum in the region of £6,000 to be raised.

Since 1908, a number of significant additions have been built, including choir stalls, a font canopy, a window and processional cross and a War Memorial. One of the most significant, however, was an oak screen in 1930, the last of five oak screens which had been planned to compose the screenwork in the spacious chancel of the church, a scheme initiated in 1897. The main portion of the screen was dedicated in 1899 followed later by two other portions enclosing the Lady Chapel on the north side of the chancel and, in 1925, a portion on the south side was erected near the organ chamber. The final portion was part of the offering of the congregation to mark the jubilee of the church.

Sketch by Bill Pates, of Addingham.



St. Margaret's Church, Ilkley.

ACROSS THE YEARS 6 MAR 1981

Travellers Stranded After Heavy Snowfall

100 Years Ago

There was a heavy snow-storm in Ilkley during the first few days of March, resulting in blocked streets and thoroughfares, some with drifts of snow several feet high putting an end to carriage traffic, and to some pedestrian traffic. A local government meeting had to be postponed, many travellers were stranded, and a large number of sheep were feared to be dead imbedded in the snow.

Members of the Rombalds Moor Friendly Society celebrated their annual gathering. They formed a procession at 11 a.m. marching through the streets for about an hour and then adjourning to the Parish Church for a service. Another procession followed, after which the brethren retired to the Rose

75 Years Ago

Ilkley Angling Club was praised by W. Carter Platts as a flourishing organisation. They had a club room in the Middleton Hotel where a library of books relating to angling was to be formed. A book on Wharfe flies to be used as a reference book was to be compiled containing samples of the artificials, full details of their dressings, and the time of the year when the natural insects appeared on the water. This work was placed in the hands of Messrs. Wm. Brumfit, Lister Robinson and Ellis Beanlands, all keen fly fishermen in the Ilkley club.

Miss Florrie Bell, music teacher, and her students staged a "capital concert" in the Lecture Hall in aid of the Ilkley Orphanage.

50 Years Ago

At the March meeting of Ilkley Urban District Council, the Electrical Engineer, Mr. Greenhalgh, gave a statement of the year's trading figures and reported that substantial savings had been effected. As a result of this it was decided to make a considerable reduction in the tariff of charges to date back to the start of January.

Ilkley and District Allotments and Horticultural Society decided to make themselves responsible for the administration in the Ilkley district of the Government scheme to provide allotment gardens for the unemployed or partially employed. Fifty plots had been marked out by the Council in the field purchased for this purpose in Little Lane and Leeds Road and which were to be let rent free for the year.

Remarkable figures indicating longevity in the Ilkley area were presented to the Council by the Medical Officer of Health. Of nine

25 Years Ago

Nearly 1,000 people surged into the King's Hall and overflowed into the Annexe to see the "Have-a-Go" programme with Wilfred Pickles transmitted from Ilkley.

The competitors were Peter Clegg (12), Mr. Austin Parks (77), Miss Barbara Hardisty, Mrs. Mary Skirrow (89), Mr. Jack Barnes, Mrs. Mary Ellis and Mr. Wm Wright. Following the broadcast requests were received for samples of Ilkley water from Maidenhead and Cambridge, from listeners hoping to cure their rheumatism with Ilkley spa water.

Motorists who admire the scenery and did not pay enough attention to their driving were suggested as the cause for Ilkley having the second highest accident rate in the West Riding Urban Districts. Ilkley with a rate of one accident to every 65 people in the district was second only to Tickhill, and the trunk road near Cara Cars was the accident black spot.

6 MARCH 1981

COUNCIL PREPARE CASE TO OPPOSE PLAN FOR STORE ON CAR PARK

A case to oppose the proposed building of a supermarket on land adjoining Ilkley's central car park is being prepared by Ilkley Parish Council.

The West Riding Co-operative Society's application for planning permission will be the subject of a public inquiry on a date yet to be announced.

Controversy has raged in the town since the application was first presented fifteen months ago. Whilst Ilkley Parish Council is not against a Co-operative store in the town it is opposed to a store on that land adjoining the town's central car park.

Last October the West Yorkshire County Council ruled that the development should not take place but Bradford Metropolitan District Council decided to take legal advice about the validity of the special powers taken by the County, which as highway authority, opposed the scheme because of the traffic problems which would be created.

At Monday's meeting of the Parish Council the Chairman Elect, Cr. Mrs. M. Renton reported further on the Council's plans to be legally represented at the inquiry. She had been in contact with a firm of solicitors who were willing to talk to the Council and answer questions at an informal meeting later this month.

It was hoped by some councillors that the public inquiry would be held before May. Local organisations and individuals will have the opportunity of speaking at the inquiry. Ilkley Civic Society and many people had made it clear they would be prepared to fight against the case to be prepared by the Co-operative Society.

The Parish Council has appointed a special sub-committee to prepare the Council's case to be presented before an Inspector of the Department of the Environment at the public inquiry.

Serving on this is the Chairman of the Council, Cr. Kenneth G. Johnson, the Chairman Elect, Cr. Mrs. M. Renton, the Chairman of the Plans Committee, Cr. S. Crossley-Smith and the Chairman of the General Purposes Committee, Cr. W. R. Hill.

PLAN FOR STORE ON FORMER GOODS YARD SITE

Members of Bradford Metropolitan Council's Planning Panel are to visit the site of the former railway goods yard at Springs Lane, Ilkley, on Monday, before reaching a decision on its suitability for a supermarket development.

A spokesman for Hillards, the Cleckheaton based supermarket company who already have a store at Railway Road, confirmed this week that the firm was hoping to build a new store on the Springs Lane site.

Mr. Tom Parr, Hillards Chief Planning Advisor said the planning application being considered had been submitted by British Rail, who had invited tenders for the land. Hillards had in fact been awarded the site if planning permission was given, he added.

"If planning permission is obtained I see no reason why we should not go ahead with purchase of the site," said Mr. Parr.

Ilkley Parish Council's Plans Committee has already recommended approval for the application.

The plans are for a supermarket and light industrial units, with car parking for 150 vehicles. The site is close to the town centre and it was suggested that all local shoppers could use the parking facilities on a short term basis.

Parish Councillors also felt that if Hillards built a new store on the site the traffic problems and congestion in Railway Road, near their existing store, would be alleviated. The Railway Road premises would also be free for more suitable use.

Cr. W. R. Hill felt care should be exercised in use for industrial purposes and Cr. P. A. Williams suggested the possibility of using the site for parking in the meantime.

ACROSS THE YEARS 13 MAR 1981

ILKLEY PREPARES FOR A CENSUS

100 Years Ago

Preparations were in hand for the 1981 census. Ilkley was divided into four sections.—North: Parish of All Saints with 229 houses; East: Parish of All Saints with 255 houses; South: West side Parish of St. Margaret with 117 houses; West: Parish of St. Margarets with 195 houses. The census was of more than usual interest as the Government were awaiting the bringing in of a Reform Bill for the assimilation of County and Borough Franchise until the increase in the population of the country was fully ascertained.

Ilkley Liberal Club gave a successful soiree with Mr. H. J. Crooke presiding. The programme consisted of solos and a trio of piano, violin, and violoncello and a "laughable farce" entitled "Cool as a Cucumber."

75 Years Ago

A prize of £10 offered by the Ilkley Advertising Board for the

best design for a poster to advertise the town was won by an Ilkley woman, Miss Frances Darlington. The striking feature of the entry was a Roman soldier bearing a banner proclaiming the words "Roman Olicana" standing on a rocky prominence with a view of open moorland behind him.

A two day Japanese bazaar was held in connection with the Children's Missionary Band associated with the Congregational Church. Miss Breach, with the Misses A. and B. Grimshaw were in charge of the arrangements, and the hall was suitably decorated to give the Eastern effect. In the evenings there was an entertainment consisting of scenes from Charles Dickens, solos, gramophone selections by Mr. Grimshaw and a Punch and Judy show.

50 Years Ago

The slopes of Ilkley Moor were under snow, and plenty of steep fields had scope for sledging in the coldest March recorded for 60 years. The tarn had been swept by council workmen and there was a good surface for skating, with bright sunshine on most days.

Welcome news for Ilkley and District ratepayers that the Ilkley rates were to be reduced by 2s. 8d. in the pound was announced at the March meeting of Ilkley Urban District Council. Tribute was paid to the chief Finance Officer, Mr. Sykes for his great efficiency and it was felt that Ilkley's finances could not be placed in better hands. Mr. T. Kirkley, the Chairman of the Finance Committee, was complimented by the Council Chairman, Mr. J. W. Dixon on his work during the preceding year.

Mr. J. H. Armistead who had represented the Ilkley and Burley Division on the County Council for six years was appointed a County Alderman in the footsteps of Major F. H. Fawkes.

25 Years Ago

The first week of March was heralded with a powerful gale roaring down the valley. Huge trees were uprooted to block main roads, slates and tiles were torn off roofs and chimney pots were blown down. Ilkley Council faced a big repair bill for damage to its Council houses and private property owners were similarly affected. Workmen were employed on the job of repairing storm damage throughout Wharfedale estimated altogether at many thousands of pounds.

Members of Addingham Parish Council complained that their first intimation of decisions concerning village affairs made by Skipton Rural District Council reached them through village gossip or the columns of the Ilkley Gazette. Parish Councillors thought they should be given the information by the village's representative Mr. C. Newton, also a member of the Parish Council.

Local History Library

Sir,—A mini research centre based at Ilkley Library is to be set up . . . it will be housed with the existing local history collection and the public were invited to deposit books, maps, photographs etc., at the Ilkley Gazette for 13 March. In the same issue a correspondent reported that she had been informed that the history collection at the Ilkley Library was "to be dissipated owing to pressure of space"; and others have been informed that one at least of the local history room bookcases will have to be removed to enable a doorway to be made.

How can these statements be reconciled and what is the true position? The local history room at Ilkley Library is a unique and valuable collection which is used to its best advantage as a reference library.

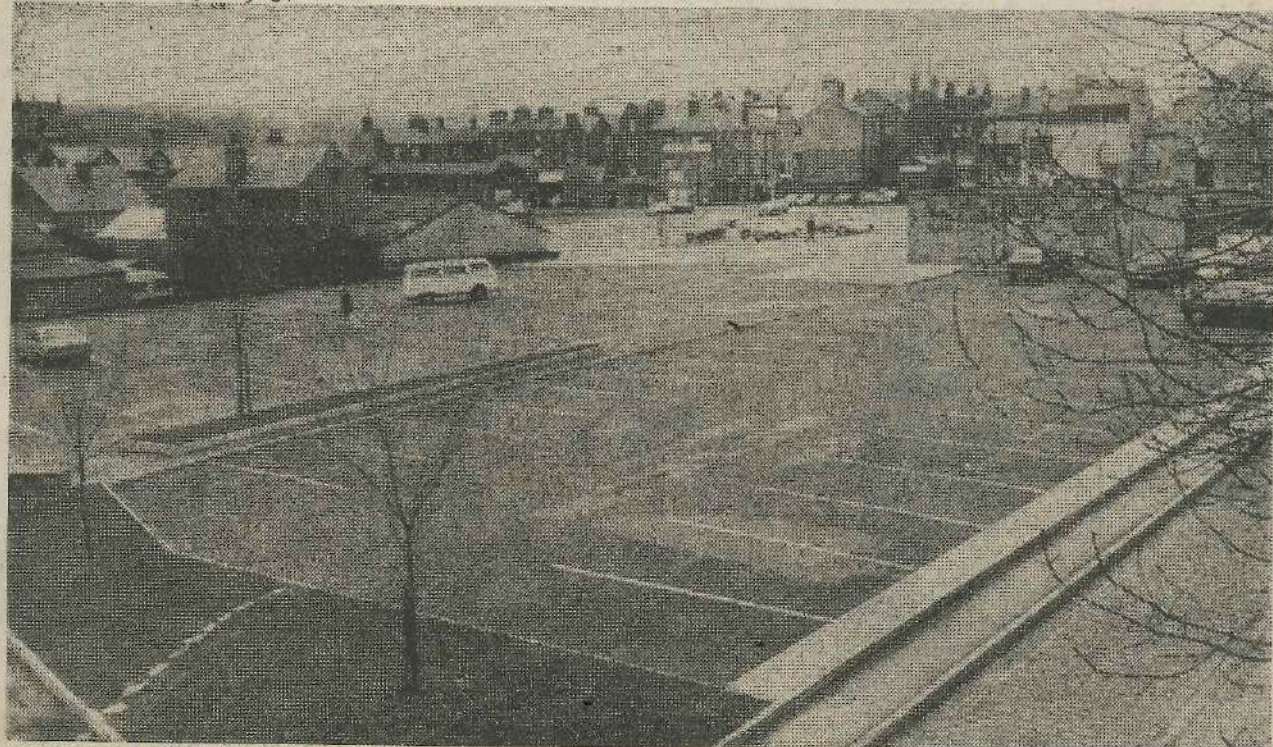
We ask all Ilkley people to press for clarification and for the retention of the Local History Library in its present condition.

MAY & CHARLES PICKLES
Brackenclose,
78 Bolling Road,
Ben Rhydding.

Note:—An assurance that the local history collection would not be dispersed has been given by Ilkley Librarian Mr. Norman Alvin. He explained that a tourist information office was being provided, which would take some of the space from the library, and they were considering moving most of the Ilkley information into a quiet study room.

They were also thinking of moving some reference material, mainly lighter works and items on Yorkshire in general, out of the collection and into the lending library, but he stressed that the whole collection would still be in Ilkley. All the important works would still be kept for reference use only in the reference library—Editor.

20 MARCH 1981



Ilkley's central car park has plenty of empty spaces as shoppers boycott the area since the introduction of parking

20 MARCH 1981

Local Board Discussed Scheme For Drainage And Sewerage

100 Years Ago

A scheme for drainage and sewerage in the township of Ilkley was discussed at the Ilkley Local Board meeting. Board members were awaiting a proper plan from the Surveyor, but he had still much work to do before it could be presented. The chairman said the scheme was of great importance and it was essential that the matter was settled as soon as possible.

The Ilkley Hospital reported a very successful year. It had been open for a period of 31 weeks from the start of April until early November, and for 22 of these weeks it had been full. 650 patients were admitted. The cost per patient was £1 10s. 3d. per week. The housekeeping bill for the full 31 weeks amounted to a total of £696.

75 Years Ago

Ilkley experienced a typical football crowd for once, when over a thousand people travelled by train to watch a match between Skipton and Headingley, the first round of the Yorkshire Rugby Union Challenge Cup, which was played on the Ilkley ground.

An ambitious production of Edward Elgar's "Scenes from the Saga of King Olaf" was staged by the Ilkley Operatic Society, for which a very fine orchestra had to be hired, mostly members of the Leeds Municipal Orchestra. The chorus and orchestra. The chorus and orchestra numbered about 120 and the work was conducted by Mr. A. T. Ackeroyd, who was at that time the society's own conductor.

The Governors of Ilkley Grammar School, which was to celebrate its tercentenary in 1907, were to found some leaving scholarships to universities in the British Isles. The first was to take effect from July 1906 and was for an annual £30 over a three year period. The candidates had to be under 19 years of age.

50 Years Ago

The first annual Wharfedale Dance Band contests was held in the King's Hall and Winter Gardens, and attracted a large number of dancers who had the novel experience of dancing to the music of ten different dance bands in one evening. Mr. Henry Croudson, the organist at the New Cinema, Ilkley, was in charge of all the evening's arrangements. Conri Tait and his brother Harry Tait were the adjudicators, and the winner was Eric Noble's Band from Leeds.

A first official test transmission for public reception from the B.B.C.'s new North Regional Station at Moorside Edge had particular interest for Wharfedale wireless listeners. The new station was to operate on a power of 75 kilowatts, 25 kilowatts more than the National transmitter at Daventry, and was very close to the Ilkley district.

Forthcoming attractions for Easter at the Wells House Hotel were a Saturday dinner/dance at 8/6d. and a fancy dress dinner/dance on Easter Monday at 10/6d.

25 Years Ago

Over 100 people attended the opening ceremony of the Ilkley Old Folk's Club at the Essoldo Ballroom when Council Chairman, Mr. W. Hill said the Ilkley and District Round Table had been responsible initially for the formation of the club, with the co-operation of other local organisations.

The Chairman of the Ilkley and District Round Table, Mr. George Newton, thanked Mrs. F. S. Hampshire and Mrs. Tilley who had been prime movers in the project. Refreshments were served and an entertainment was given by the choir from the Ilkley College of Housecraft.

In the Wharfedale District there was a good response to a programme to vaccinate children between two and nine years of age against poliomyelitis. There was a two thirds acceptance in respect of children of school age.

27 MARCH 1981

Severe Winter Blamed For Sickness At Burley

100 Years Ago

Burley Local Board approved the Surveyor's plans for the extension of the Township Day School as well as the building of New Local Board Offices.

The medical officer's report for Burley stated there had been a great deal of sickness in the village, mostly of a respiratory nature, induced by the severity of the winter.

Ilkley's Hydropathic establishments were advertising their amenities and terms. Marlborough House offered terms of £1 2s. 6d. per week and the Troutbeck Hydropathic Establishment and Craiglands offered reduced terms during the winter months. Both offered the services of a resident physician.

75 Years Ago

Members of Ilkley Moor Golf Club held their first annual meeting at the Spa Hydro, with Mr. S. Kellett presiding. After the club started with a modest 35 members in 1905 there were 121 members in March, 1906. The membership fee was fixed at one guinea and a proposal to limit the membership was turned down.

Mr. Garratt, of the Bridge Pleasure Grounds, was planning a brass band contest to be held on Easter Monday which had attracted an entry of seventeen bands.

Ilkley hotels reported heavy bookings for the forthcoming Easter weekend. At Ben Rhydding hydro the entire accommodation was fully booked, Wells House was also full, as were Craiglands, the Troutbeck and Marlborough House. Stoney Lea Hotel was fully booked with many residents sleeping out. The hotels offered full programmes of dances and entertainment and various special attractions had been arranged for the amusement of the visitors.

50 Years Ago

Ilkley Gliding Club arranged an intensive course of training for the Easter holiday period. A site had been secured in the Malham district where about twelve members of the Club were to stay throughout the holidays and would be visited daily by other club members. Mr. H. Crabtree

Jnr, who had obtained his "C" certificate in Germany was to act as Club instructor and was to take charge.

All retiring members of Ilkley Urban District Council whose seats were contested were defeated in the local elections. Victorious candidates were Mrs. Kate Foster, Mr. W. E. Dittsdale, Mr. F. Sugden and Mr. G. W. Thompson.

Two Wharfedale men were elected to responsible positions on the executive of the Bradford Association of Master Printers. They were Mr. H. J. Giedhill of 4 Marlborough Grove, Ilkley and Mr. Ray Renwick, of Weston Bank, Otley. Mr. Giedhill was elected as president and Mr. Renwick accepted office as junior vice-president.

25 Years Ago

Despite dry weather, Ilkley had few visitors over Easter weekend compared with past years. There was a cold wind for most of the holiday, and there were no long queues for the Bradford and Leeds buses. At testime on Saturday there was not even one full bus load. Motorists had, however, congregated in the vicinity of the Cow and Calf to enjoy the view, and there was a long stream of traffic through the town on the way to the dales and the west coast.

Farmers, their wives and children helped Ilkley firemen fight a fire on Langbar Moor affecting 150 acres of land near the Moor Ranger's Cottage. There was danger to isolated farms owing to the fresh breeze, but twenty volunteers helped the fire service to beat out the flames within two hours.

20 MARCH 1981

ADDINGHAM — "MY VILLAGE"

There was a full attendance at Addingham Memorial Hall for Miss Hilda Holmes' presentation of slides on "My Village" to members of Addingham Civic Society and guests from Ilkley Civic Society.

Addingham had early beginnings but was now chiefly seen as a product of the Industrial Revolution. Slides, taken from old photographs and postcards, showed Lister's Burnside Mill, now a warehouse; the old Piece Hall, now Smith the butcher; the former Post Office, now Riley's bakery; Pop Harrison's Pop Factory, the building adjacent to Riley's where Catholics formerly met for worship; the Old School; Chapel Lane loom shop; the Methodist Chapel, now flats; Greenwood's Mausoleum and the Wesleyan School, where services were now held.

Miss Holmes showed views of Aynholme: High Mill, then worsted yarn; the corn mill; Farfield Hall, built by Myers the Quaker, and the Rookery.

Malt Kiln Fold was of interest and the Malt Inn was the army canteen during the last war, she said.

Views of the various public houses and the railway station closed in 1965, were shown. There was a fine slide of the first open passenger train to pass through Addingham and slides showing the Old Liberal Club, Varley's grocer shop, the Memorial Hall as a Primitive Methodist Chapel, the old Conservative Club, the Fleece Inn, the saw mill and old dam, the Old King's Arms Inn, the Old Junction Inn and Low Mill were presented.

Miss Holmes talked about 12th century St. Peter's Church, including the Vavours and the results of excavations.

A tea interval was followed by a film on "Re-cycling", featuring Ronnie Barker. Miss Holmes was thanked by the chairman, Mr. Malcolm Bardsall, and a member of Ilkley Civic Society congratulated Addingham Civic Society on its progress since its formation.

27 MAR 1981

New Bishop of Bradford

The suffragen Bishop of Hull, the Rt. Rev. Geoffrey John Paul (59), became the new Bishop of Bradford at a ceremony in York Minster on Friday.

The ancient ceremony confirming his election took place in York Consistory Court.

It was the procedure by which he legally became Bishop of Bradford His enthronement, the religious ceremony associated with his appointment is to take place in Bradford Cathedral on Friday, April 24.

Bishop Paul married with five children, succeeds the Rt. Rev. Ross Hook, at Bradford who last autumn was appointed chief personal assistant to the Archbishop of Canterbury. Dr. Robert Runcie.

Bishop Paul was consecrated Suffragen Bishop of Hull in York Minster in March 1977, after five years as warden of Lee Abbey, an Anglican conference house in North Devon.

He took an MA degree at Cambridge in 1946 and a Master of Theology degree at King's College, London. He was ordained Deacon in 1948 and Priest the following year.

MUSEUM FRONTAGE BENEFITS FROM TOURIST DEVELOPMENT GROUP

27 MARCH 1981

Land fronting on to Ilkley Museum is to benefit from money provided by the Yorkshire Tourist Development Group of Bradford Metropolitan Council.

Work on the scheme to improve the amenities for tourists and to restore the land has begun.

A raised platform of York stone flagging running parallel to the dividing stone wall of the nearby Parish Church covering an area of 20 yards by ten yards and stretching

back to the Museum was well on the way towards completion this week. Fronting this is an area of York stone flagging covering an area of 40 yards by twenty yards. A narrow bed for the planting of climbing shrubs runs at the back of the raised flagged platform against the wall of the church.

The remainder of the land towards the back of the cafe in Church Street will be laid in sets (cobble stones) and a narrow bed for the planting of shrubs and flowers runs to

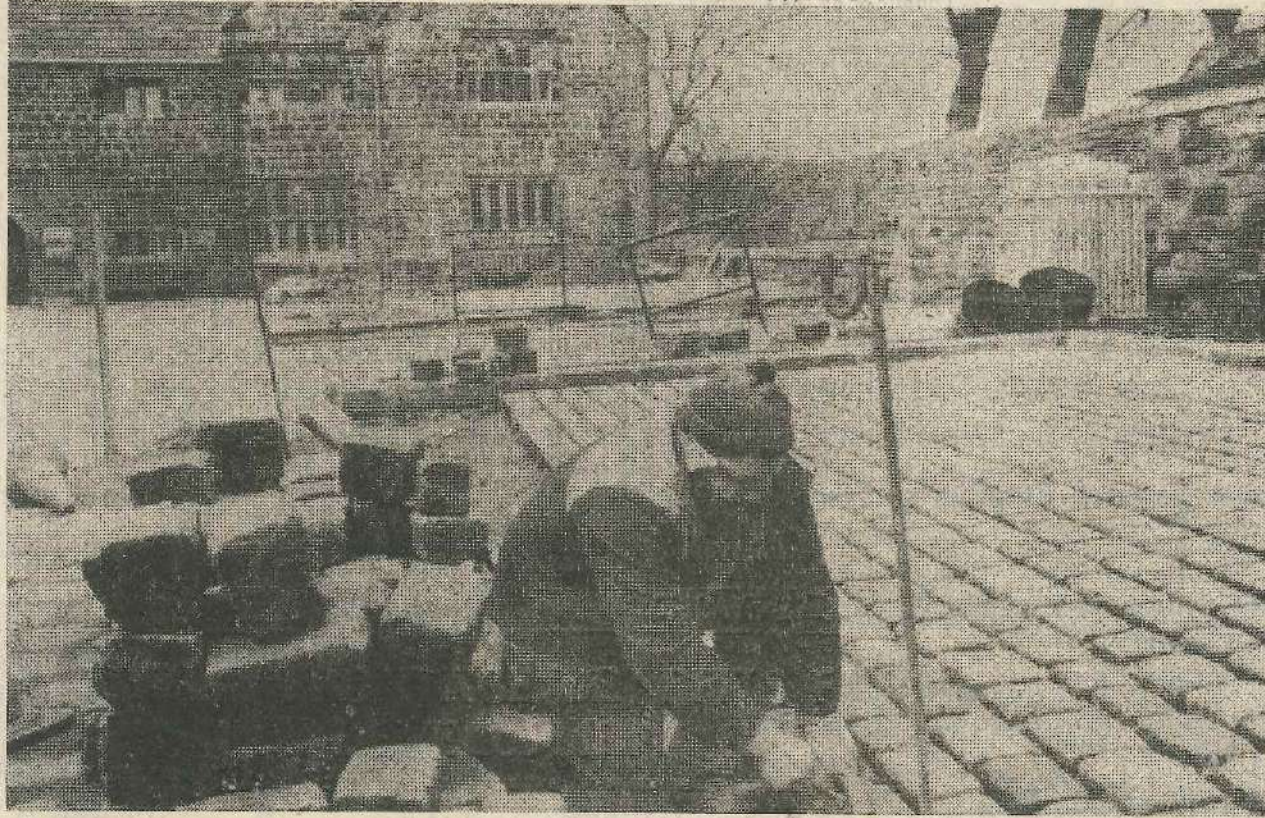
one side of this section of cobble stones and around the back against the boundary wall of the church.

A twenty yards stretch of cobble stones is to be laid on the rough drive at the top of Castle Hill to the immediate west of the Museum but as the remainder of this rough surface approach from Bridge Lane up to the Museum does not belong to Bradford Metropolitan Council no plans have been made in relation to improvements.

Mr. Stephen Curry, Archaeologist with the Museum Services Department of Bradford Metropolitan Council envisaged open air concerts and exhibitions being staged on the raised platform of flagging with space for the audience and seating being provided on the larger section at ground level.

The electricity for the flood-lighting of this area has already been installed on the Museum building.

Picture shows the work in progress.



27 MARCH 1981

COUNCILS IN DISPUTE OVER SITES FOR SUPERMARKETS AT ILKLEY

A full scale row has developed between three councils concerning the future siting of supermarket developments at Ilkley.

They can not agree over an application for a Co-operative departmental store on part of the town's central car park or on an application for another supermarket development on the former railway goods yard.

The application by the West Yorkshire Co-operative Society favoured by Bradford Metropolitan Council, but not favoured by Ilkley Parish Council or the West Yorkshire Metropolitan Council will be the subject of an appeal at a public inquiry in May.

Another application, this time for the development of the old railway goods yard, was refused by Bradford Metropolitan Council's Plans Panel on Monday on the following grounds —

"The proposed development has been refused because it represents a substantial addition to the shopping floor space in Ilkley on a site clearly separated from the existing shopping centre. The local planning authority is concerned to ensure that the integrity of the existing shopping centre is retained in the interests of the shopping public.

"There are other, current, proposals for shopping development on sites within the established shopping centre which would meet the local planning authority's objectives and it is considered that this proposal is premature until these developments have taken place."

The proposals for the goods yard site were welcomed with open arms by Ilkley Parish Council as something for the benefit and service of the town. Hillards, the Cleckheaton based supermarket

company who already had a store in Railway Road was hoping to build a new store on the goods yard land. The application had been submitted by British Rail who had invited tenders for the land and had awarded the site to Hillards if planning permission was obtained.

The plans were for a super-market and light industrial units with parking for 150 vehicles. The site lies within a few minutes walk of Ilkley's town centre. Parish Councillors felt that if Hillards built a new store on the site the traffic problems in Railway Road near their existing store would be alleviated. The Railway Road premises would also be free for more suitable use.

Commenting on the decision reached by Bradford Metropolitan Council's Planning Department, West Yorkshire Cnty Cr. H. V. Haddrill, of Ilkley, said the Structure Plan policy for shops as approved by the Secretary of State says that shopping developments should take place in or near the centre of existing towns and city centres.

The site for which planning permission has been refused was clearly part of the centre of Ilkley and there were no reasonable grounds for refusing the application, said Cnty Cr. Haddrill.

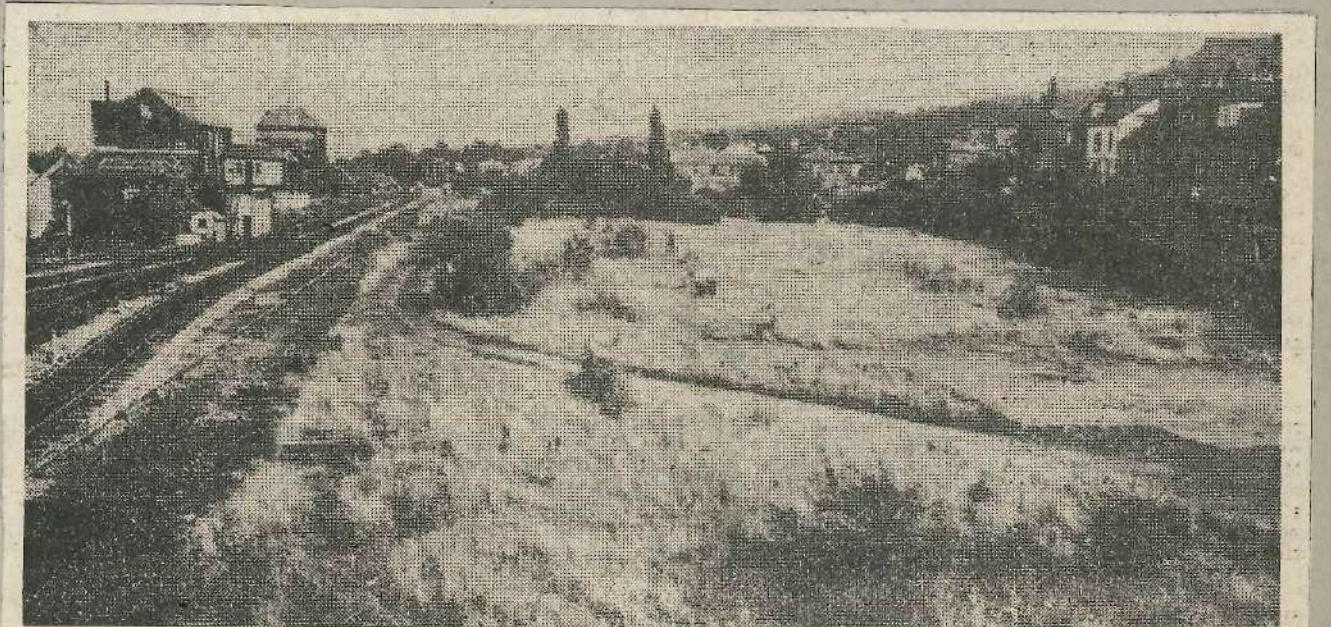
"I hope the applicants will appeal against the decision which is clearly unreasonable and which I think will not stand up to critical examination," said Cnty Cr. Haddrill.

"One would have hoped that the Bradford planners would have borne in mind the strength of public feeling against other shopping developments which had been mooted. Judging by Bradford's track record the knowledge that the people of Ilkley wished a certain course of action be followed may well have led them to take the opposite point of view," said Cnty Cr. Haddrill.

PREPARING CASE

Ilkley Parish Councillors met in private on Monday night to discuss with a representative of an Ilkley firm of solicitors the question of being legally represented at a public inquiry in May concerning the appeal by the West Yorkshire Co-operative Society for planning permission to build a store on land near the town's central car park.

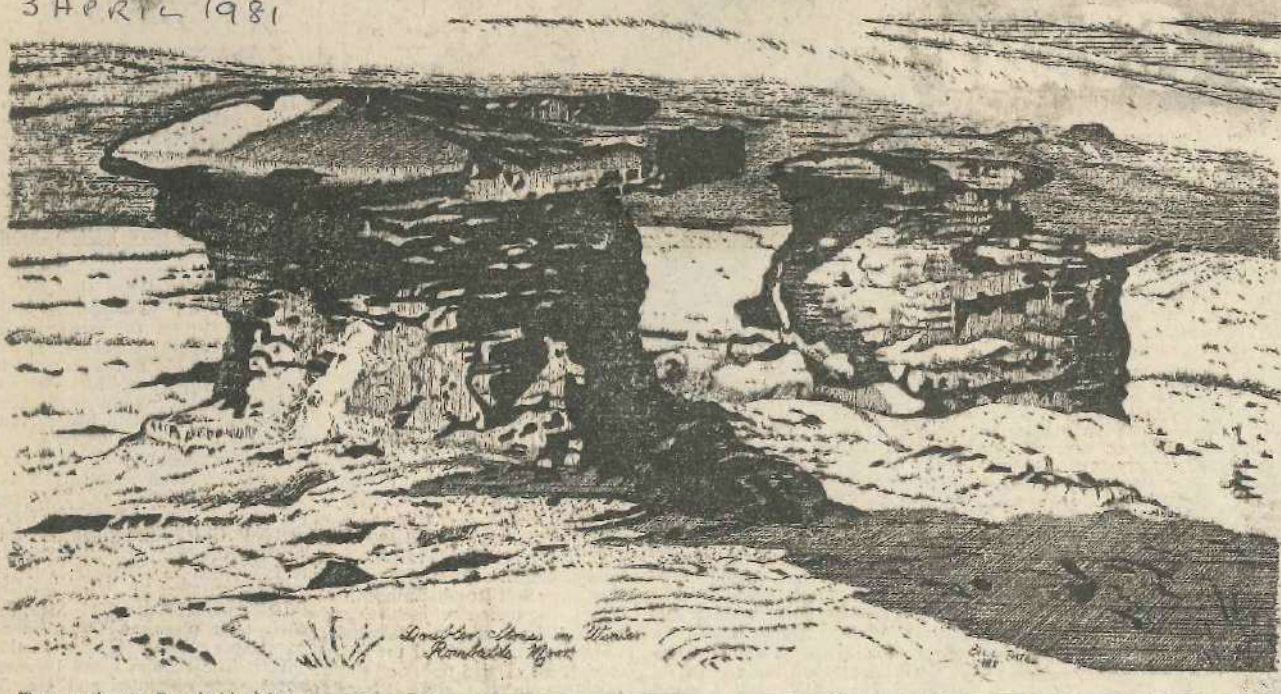
Councillors discussed ways and means of raising funds towards the legal costs.



One of the reasons given this week by the Plans Panel of Bradford Metropolitan Council for turning down plans for a super-market development on the former railway goods yard at Hillards was that it

Remarkable Freaks Of Nature On Moor

3 APRIL 1981



Two rocks on Rombalds Moor, known as the Doubler Stones, are by far the most remarkable freaks of nature in the district. In general outline they resemble giant toadstools. The distance between the stones is thirty feet and the intermediate ground is level. East stone consists of a measuring eleven feet by eleven pillar six feet in diameter supporting a flat slab or cap, one foot and one foot thick, and the other eleven foot three inches by ten foot and one foot thick.

The shape of each is roughly oval, and they bear traces of the work of man on their upper surfaces. There is no difficulty in climbing to the top of the first stone as there are natural steps but the second one has no easy access. The surfaces have cavities and grooves and basins joined together by grooves, and in addition there are twenty six cup markings. It has been wondered if the stones could have been Druidical altars, but there has never been any sound basis for this theory.

The stones are situated three miles south-south west of Ilkley as the crow flies and two miles east of Silsden. They can be reached by following the top line of cliffs called Addingham Edge from Panorama Rocks, and a half mile south of the west end of the cliffs are the Doubler Stones situated about 1,100 feet above sea level and overlooking the Aire Valley.

ACROSS THE YEARS 3 APRIL 1981

POPULATION OF ILKLEY DOUBLES IN TEN YEARS

100 Years Ago

The total population in Ilkley, according to the census figures of 1881, was 4,732, made up of 2,047 males and 2,685 females. The population was seen to have nearly doubled since 1871. The number of houses occupied was 815, giving the average number in each household as 5.8 persons. There were 96 unoccupied houses in the town, but this included people who were away from home at the time the census was taken.

Dry cool weather retarded the tree buds growth in the period before Easter. However, a good number of people were expected to walk over the moors, and visit Middleton Woods and Bolton Abbey.

A good crowd of spectators turned out to the Ilkley football ground to watch a Rugby match between Ilkley and Burley. Ilkley scored 24 points to the Burley team's 15. Ilkley's outstanding players were A. R. and J. R. Atkinson and Clark distinguished himself at three-quarters for Burley.

75 Years Ago

There was an interesting lantern slide evening at the Lecture Hall when a large collection of lantern slides of old Ilkley and its inhabitants was shown for the benefit of the Charity Carnival Fund. There were over 200 slides revealing every stage of the town's development over the previous 100 years. Mr F. Bontoft manipulated the lantern.

The whole of the work connected with the Brook Street improvement and the New Bridge Scheme was completed, and the authority and approval of the three authorities concerned was only necessary before the road and the bridge were handed over for the use of the public for all time.

Burley in Wharfedale District Council decided to levy the general district at 2s. in the pound. Messrs. Fison and Co., Greenholme, Burley, intimated their willingness to hand over their old bell to Burley Council for use as a fire alarm. The bell had many old associations.

50 Years Ago

A very large crowd filled Ilkley's streets and swarmed over the Moors on Easter Monday.

1931. The holiday weekend had been favoured by brilliant sunshine and settled weather, and the poor economic climate of the time made travelling further afield impracticable. Local caterers said the demand for meals broke all records since the 1914-18 war despite the fact that thousands of the visitors carried their own picnic food in rucksacks and haversacks. On the moors there was barely room to sit down in the vicinity of White Wells and thousands climbed up to admire the view from the Cow and Calf rocks.

However, the Yorkshire Observer had reported that it had received complaints of overcharging for teas in Ilkley over the holiday weekend and their correspondents complained that they were charged 2/- to 2/6 for teas that would have been dear at 9d. The Ilkley Gazette had therefore called upon some of the town's cafes and discovered that the larger ones charged 4d. to 5d. a pot of tea, and the cafe on the moors charged 3d. A full afternoon tea could be obtained for a shilling.

25 Years Ago

An organisation to be known as the Ilkley Ratepayer's Association was formed at a meeting in the Grove Schoolrooms, with Mr. J. C. Scott in the chair. Those interested declared an intention of putting up candidates to contest the seats in the next local council elections. The ratepayers present expressed great dissatisfaction with the councillors serving at that time. One big grievance was that during the previous dry summer two large industrial consumers had helped themselves to water from streams flowing through the town, and had openly boasted of the fact. If the water in question had been properly metered it would have cost each of the consumers in the vicinity of £400. The meeting elected a committee consisting of—Messrs. G. E. Fearnside, H. Coxon, G. Wilkinson, J. Spooner, J. A. Crabtree, W. Dell, S. F. Clarke, L. G. Mennell, W. Atha, H. Wilmer, T. Lynch and Messdames S. Todd and N. Chantry.

Mr. Harry V. Haddrill, of Ilkley was adopted as Conservative candidate for the Ilkley vacancy due to arise on the West Riding County Council.

3 APRIL 1981

MAJOR FACELIFT FOR FAMOUS COACHING INN

One of the North of England's most famous old coaching inns—the Devonshire Arms at Bolton Abbey in North Yorkshire—is undergoing a major facelift which will increase the size of this 18th century inn while retaining its traditional welcoming atmosphere.

As suggested by its name, the hotel is owned by the Trustees of the Chatsworth Settlement and the Duchess of Devonshire is taking a personal interest in the restoration work.

Due for opening by Easter 1982, the original property will be restored and a new public bar area, kitchens and other amenities will be provided. An additional 29 bedrooms will be constructed in an "L" shaped block facing the banks of the River Wharfe to add to the nine bedrooms in the existing building.

Architects for the project are John Brunton and Partners, of Bradford, Leeds, Manchester and London, who have designed the new buildings with a pitched roof to echo the character of traditional Yorkshire Dales buildings including the nearby tithe barn—one of the oldest and largest in England.

The atmosphere of a comfortable country hotel will be retained by careful choice of soft furnishings, fixtures, fittings and paintings. The client has instructed John Bruntons that the completed project should be "Good but not grand".

Bolton Abbey, on the River Wharfe, has been a popular beauty spot for many years. In the last century the Midland Railway built a station with extra long platforms to accommodate the special excursion trains, and over the six days of Whitsuntide week in 1895 over 80,000 people passed the Devonshire Arms, between the station and the Priory, many from as far away as Sheffield, Liverpool and Manchester.

Nearby are the world famous Barden Grouse Moors, which have long attracted famous shots, while the River Wharfe has provided legendary trout fishing for sportsmen from all over the world.

Foxhounds, beagles and otter hounds have traditionally met at the hotel, which has hosted shooting parties from the Middle East, France and Switzerland.

The kitchens and huge wine cellars of the hotel have long provided memorable menus, even throughout the war years and times of austerity.

One famous part of the hotel is the "Fishermen's Passage", where the rods of guests were racked—and these could be split cane rods up to nine feet in one piece.

A final interest to the story of Bolton Abbey and the Devonshire Arms: the last Prior of Bolton Priory before Henry VIII's dissolution of the monasteries was Prior Moone—and the architectural partner in charge of the restoration work is Harry Moon, of John Brunton's, a senior partner in the firm.

3 APRIL 1981

PLAN FOR LARGEST SHOPPING DEVELOPMENT IN CENTRE OF ILKLEY THIS CENTURY

Outline plans for the largest single shopping development in Ilkley this century - costing probably between £1¼ and £1½ million have been submitted to Bradford Metropolitan Council for consideration.

The ambitious scheme would include a large new store for Woolworth's as well as eighteen other shop units on land fronting Brook Street, adjacent to the railway station.

The application has been made jointly by Shop and Store Developments Ltd and British Railways Property Board, and the development is a joint scheme between the two. Shop and Store Developments' parent company is Greenwood's (Mens Wear) Ltd, of Guiseley, who have traded on the site for the last thirty years.

The proposed scheme would include the demolition of the existing buildings on Brook Street up to the access road to the station, and the removal of the embankment which used to support the railway bridge across Brook Street.

The location plans show 'on site' parking for about 120 cars, with rear delivery to the new development. Pedestrians would, therefore, be able to enter the shopping development from the car parking area under cover, using the glazed under cover facilities of the existing railway station.

The existing station, part of which would be used for delivery vehicles, would be enhanced by the introduction of York stone paving slabs to the service area, and it is anticipated that vehicle deliveries would be before 9:00 am and after 5:30 pm. Separate parking bays for goods delivery vehicles would be provided outside this area.

Certain other repairs would have to be carried out to the existing railway station roofing, thus preserving and maintaining the existing covered station in its present Victorian form.

The main development comprises a large new store for Woolworth's, eighteen other shop units with glazed roof covered malls, high level shopping over the Brook Street shop units. The development would be phased so that the area at present covered by the old embankment would be removed and a new store built for Woolworth's before demolition of the existing store. The next phase would then be carried out, involving the construction of the covered shopping malls and two level shopping to Brook Street. Ground floors would have frontages to Brook Street, and first floor units frontages to the main mall.

In the scheme would be an underground service core to allow deliveries to shop units and at the same time store rubbish containers for the individual tenants. No rubbish containers would be utilised within the station area.

In effect a person travelling by car or train would have direct entry into the mall from the station.

The walls would be of stone construction, with stone tile materials to the roofs, and sketches have been prepared which show the varying roof levels in relation to the existing walls of the station, and in particular featuring the glazed roofs to the covered precinct areas.

The shop units have been designed in various sizes to accommodate all types of tenant, but at the same time they would allow adjoining units to be joined together to provide larger shopping areas. This would, therefore, allow a combination of shops to be occupied by local people or multiple companies.

Three main entrances to the shopping complex would be formed, the idea being to maximise all frontage to the shop units so that the centre itself would be successful and no particular part would be dull and uninteresting.

Once development starts, it is envisaged that the contractors would work from the rear of the station area, so no contractors' vehicles would be using Brook Street frontages.

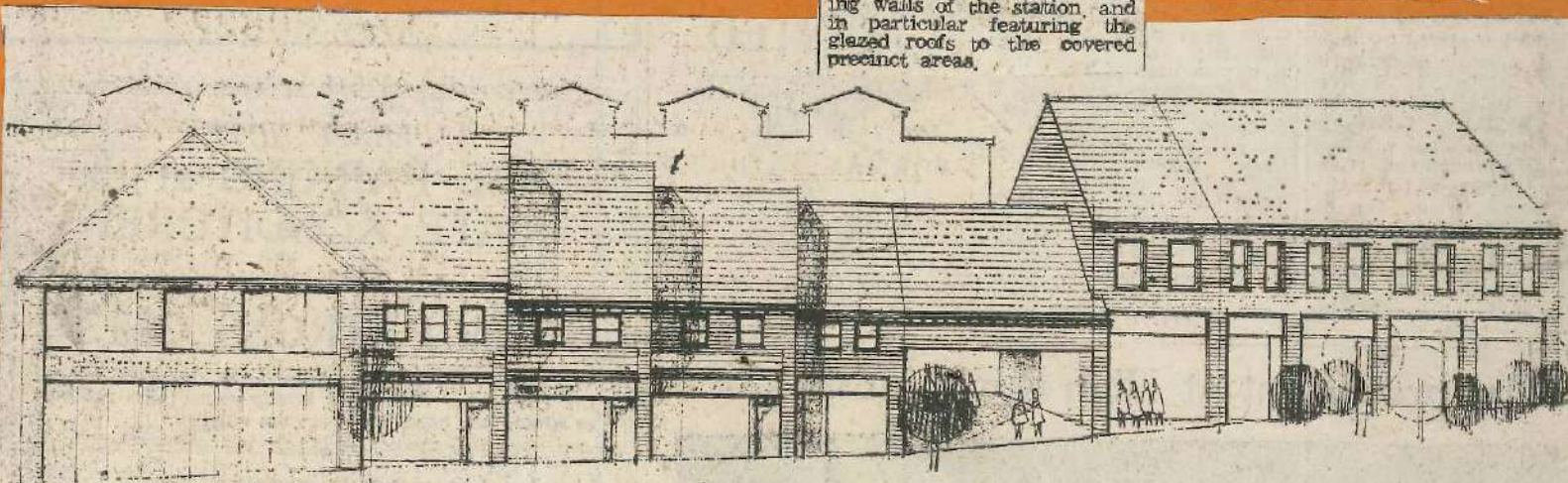
The development itself is so designed that there are no steps and all the malls would be available for any person who is disabled, along with specific car parking spaces for the disabled.

The local agents for the scheme would be Deane, Son and Hartley of Ilkley, and the national agents Donaldson and Sons of Bradford. The developers have stressed that due to the size and quality of the proposed development a considerable amount of local work would be generated in its construction and ancillary services.

Shop and Store Developments Ltd is a substantial property development and investment company, which has a vast experience of carrying out town centre redevelopment schemes, along with refurbishment of quality buildings.

They anticipate that when outline planning permission is granted a detailed planning application would be submitted concurrently, with a view to development starting in 1982.

Part of the site is at present occupied by James Hill Travel, F. W. Woolworth, Greenwood's Menswear Ellis Coiffeur, The Flower Box and The Wool Box.



An artists impression of the proposed new development in Brook Street, showing the new Woolworth's store on the left, at the junction with Railway Road.

