

G-22

May 1984



Jack Spencer

4 MAY 84

## ILKLEY COUNCILLOR RETIRES FROM LONG DISTINGUISHED CAREER

An Ilkley Councillor whose twenty five years political career came to an end with this week's elections had the rare distinction of not having missed one meeting or having abstained on any vote.

He was Jack Spencer, who did not seek re-election because he has moved from Ilkley, and with his wife and son Robert, now own the famous "Dry Gill" Ham and Egg establishment on the Grassington - Pateley Bridge Road in the Parish of Appletonreewick.

He has had a long and distinguished political career as a member of the Conservative Party, and started his involvement in politics in the early fifties when he became a founder member of the Garforth Conservative Association. He served on the Garforth branch of the Barkston Ash Conservative Division and on the executive of the Finance and General Purposes Committee of that division.

On moving to Ilkley in 1960 he was soon elected as South Ward Councillor on the former Ilkley Urban District Council and served on the Finance Committee, Leisure Services Committee and the Town Planning and Buildings Committee of which he became Chairman.

His colleagues honoured him by electing him chairman of the council in 1973. In the same year he was caretaker chairman of the newly formed Ilkley Parish Council. During that year he was elected on to the City of Bradford Metropolitan Council and in his years of office he had the honour in serving three different Members of Parliament. Sir Malcolm Stoddart Scott, Mr. David Austick and Dr. Keith Hampson.

During his unbroken service on Bradford Metropolitan Council he has always been a member of the Development Services Committee, which for eight of those years was its chairman. This committee was responsible for Housing, Planning, Environmental Health, Estates, Cleansing, Highways, Engineering, Architects Dept. and the Bradford Conditioning House. He was a member of the management committee for many years and became assistant Lord Mayor in 1974 (the first full year of the council).

He was recommended by Conservative Central Office as a Parliamentary Candidate in the mid-seventies.

### Other Duties

His other public duties have been with the Area Health Authority, the executive committee of the Yorkshire and Humberside Development Association, Leeds and Bradford Airport committee, Crematorium Board, Governor of Ilkley Grammar School, Burley Middle School and Woodhouse Grove School and many other public bodies.

Amongst his many other activities he was the first chairman of the Ilkley Branch of the British Heart Foundation, Chairman of the Ilkley Holiday Week Committee, Deacon and Trustee of the Ilkley Congregational Church (now Christchurch), Trustee of the Hollygarth Social Club, Trustee of the Ilkley Constitutional Club, Chairman of the National Savings Committee, and Road Safety Committee, etc. His untiring efforts to persuade various Ministers of Transport to site the extension of the M1 motorway to the west of Leeds and to proceed without delay the construction of the A650 Airedale Route along the valley bottom is at last taking off. He has seen the runway extension at the Leeds/Bradford Airport nearing completion in which he was an avid supporter, and his calling together all local authorities in the North of England in an effort to persuade the Water Authority not to Fluoridate water supplies was mostly successful.

He will be best remembered by using his casting vote in order to save "White Wells" from being demolished.

Jack Spencer is still in the "Rag Trade" making ladies clothing in Skipton which he started from scratch and now employs a dozen staff. One of his V.I.P. customers is H.R.H. Prince William who wears pyjamas made at his factory.

## ILKLEY ARTIST MAINTAINS A FAMILY TRADITION



Ilkley artist Leslie Simpson has just returned from London after presenting a commissioned portrait to the Lord Mayor of London, Dame Mary Donaldson G.B.E. The portrait has been submitted to the annual exhibition of the Royal Society of Portrait Painters which will be held next month.

This is a continuing success story for Mr. Simpson, who last year completed portraits of the Lord Mayors of Yorkshire's three principal cities, Bradford, Sheffield and Leeds all ladies. The coincidences are unbelievable he would have had to have waited 800 years for a "Lady" Lord Mayor of London as this was the first lady since the office began.

The portrait, 29" by 44" in oils shows Dame Mary in her black velvet day dress seated in a Mansion House chair.

The painting took two months, although negotiations took place from the very first day of the Lord Mayor taking office.

Mr. Simpson's ancestor,

John Simpson who was the official Royal Portrait artist to Queen Donna Marie of Portugal, painted the first Lord Mayor of Leeds (after the reform act) in 1837. This portrait was included in the background of Leslie Simpson's painting of the Lord Mayor of Leeds, Doreen Jenner (1982-83). Even more remarkable it was exactly one hundred and fifty years ago that John Simpson painted a portrait of the Lord Mayor of London, the Rt. Hon. Charles Fairburn. This painting is still in the collection of the Guild Hall Gallery and Leslie Simpson is keeping up the remarkable family tradition in the fine arts. Other portraits by John Simpson include King William and King George as well as two portraits of the Duke of Wellington.

Mr. Simpson, now aged fifty-four, who has been painting seriously from the age of five, will have to set his sights high if he wishes to keep up with his illustrious fore-bears.

4 MAY 84



# RESIDENTS "UP IN ARMS" OVER CAR PARK PLAN FOR "DAFFODIL HILL"

4 MAY 84

Residents in one of the oldest parts of Ilkley are up in arms at plans to build a car park on a scenic area known as "Daffodil Hill", and have made their views known to Bradford's planners with objections and petitions.

The applicants, Glovers Garages, of Ilkley, however, feel that the new car park would enhance the landscape quality of the area as well as safeguarding their future business.

Already there have been numerous objections, and hundreds of people have signed petitions against the application to convert the land at the junction of Bridge Lane and Church Street into a three bay car park with 16 spaces.

Mrs. Margaret Hill, of Bridge Lane, has collected over 100 signatures on her petition, and says that many people are horrified by the proposals. "This is a nice bit of Old Ilkley, and the plan would do away with all the daffodils and probably some maple trees," she said.

In a letter to Bradford Metropolitan Council's Planners, Mrs. Hill said the plan had nothing to recommend it and urged the council not to allow the destruction of one of the few remaining attractive parts of Old Ilkley.

Mr. W. E. Clapham, also of Bridge Lane, said the land was in a Conservation Area, and he felt sure that if planning permission was granted the car park would probably eventually be used for the display of second hand cars.

## Visual Amenity

It would be an extension of commercial activities in the Conservation area, and would destroy a very attractive visual amenity, he felt.

Miss E. M. Holt, of Wells Road, urged Ilkley residents to voice their objections to Bradford Council and Ilkley Parish Council. She said the amenity land in question was owned by Bradford Council, and had been restored to its present scenic beauty at public expense fairly recently. It was now a delight to visitors and residents alike.

Ilkley Liberals have orchestrated a campaign to save the site, which they describe as the most attractive site left in the centre of town on the main tourist route.

They say the proposals would entail cutting into the existing grassy bank, then using the earth removed to make a ridge around the car park and plant small trees on top to form a screen.

"No screen could be effective as it would be overlooked by traffic coming down Church Street from the traffic lights, down Skipton Road and from Cunliffe Road," said the Liberals.

"With an exit so near a difficult junction, there could be a traffic hazard.

"Local residents, especially those on top of the bank, will have a car park to look at instead of the present attractive outlook; we expect they will be hopping mad," they concluded.

## Screened

The architects for the scheme, however, claim it would enhance the landscape quality in the Conservation Area, and stress that the car park would be completely screened from view by a ridge and trees.

"Careful attention has been paid to effectively and tastefully landscaping the proposed parking area, and the proposals are approved. Glovers Garages will be pleased to take advice from the council's Parks Officer with regard to details," they said in a letter to the planners.

It has also been stressed that by its very nature, hidden from view, such a car park would be completely unsuitable for the display of cars for sale.

Originally it had been decided to seek a parking area for about 12 cars, which would meet Glovers Garages' requirements, but on further consideration it was felt worthwhile to add more spaces for the benefit of nearby residents, thus making better use of the land, they said.

The application had come about because Glovers were aware of the increase in on-street parking in Bridge Lane, caused by a growth in their own activity and an increased level of car ownership in the area. This had caused severe congestion near the junction with the A65 Skipton Road.

If the county council went ahead with yellow line proposals it was felt the problems would become worse, jeopardising business at the garage and other nearby premises.

Glovers had therefore investigated ways of creating off-street car parking facilities—to protect their own future and to improve the environment in the Conservation Area.

It was felt that if the proposals went ahead it would also solve the occasional hazard of children playing with wheeled vehicles running out of control down the steep gradients onto the road, said the architects.



Picture shows the scenic area of land, known as "Daffodil Hill", at the junction of Bridge Lane, Church Street and Skipton Road, which is the subject of a planning application to turn it into a car park.

Short  
Germany in  
towns and  
cautions and  
not to end

One of the first  
tures to be  
"Gazette" was  
children at the  
Infants School  
gas-masks. The  
various forms  
most popular  
was the "M  
image.

As Ilkley  
peacetime and  
precautions, o  
to completely  
town during d  
enemy bombe  
impressions o  
days are recou

It was not on  
of the streets  
it was the silen  
Friday evenin  
the period wh  
are to be tak  
the streets to  
that was all t  
because of the  
ness in the da

Friday was  
coming of the  
Leeds. The st  
even more fr  
than during t  
days. The you  
and about eve  
ing the streets  
ing what sort  
had, what pos  
tained for gan  
all prevailing  
of childhood, s  
ted with the  
among whom t  
live and make  
things should  
world once mo  
But as dark  
the streets T  
and went to b



## Ilkley Prepares For War



Shortly after the declaration of war with Germany in September, 1939, Ilkley along with other towns and cities in the country began to take precautions and prepare for the "duration" which was not to end until VE Day in 1945.

One of the first wartime pictures to be printed in the "Gazette" was this one of children at the Ilkley National Infants School fitting their gas masks. The masks came in various forms and one of the most popular with children was the "Mickey Mouse" image.

As Ilkley moved out of peacetime and began taking precautions, one of which was to completely black out the town during darkness against enemy bombers, these early impressions of those "dark" days are recounted:

It was not only the darkness of the streets that impressed; it was the silence. On that first Friday evening which began the period when "black-outs" are to be taken for granted, the streets took on a hush that was all the more strange because of the unusual busyness in the day.

Friday was the day of the coming of the children from Leeds. The streets had been even more full of children than during the normal holidays. The youngsters were out and about everywhere, exploring the streets and ways, finding what sort of shops Ilkley had, what possibilities it contained for games, and with the all prevailing Freemasonry of childhood, getting acquainted with the boys and girls among whom they had come to live and make their home till things should change and the world once more become sane.

But as darkness fell they left the streets. They had supper and went to bed.

### EVIL OVERHEAD

From the condition of the streets it almost appeared as though Ilkley had gone to bed. It was not the Ilkley we had known for the past twenty years. To those old enough, it awoke memories—they were memories with a tinge of bitterness about them. They were not all concerning Ilkley, but they were all concerning a time when night and darkness, and silence ran together—darkness and strange towns, darkness and home towns, darkness in which cigarettes were used not merely for the nicotine, but as signals to warn anyone approaching of the presence of a fellow man; but a darkness which was a shelter and protection against an evil overhead.

And now darkness had returned to Ilkley's streets. Earlier in the evening the blue velvet of it wore a grey edge as the slight mist drifted down the valley. Shadowy figures passed; many of them in uniform; often in twos. Now and again that sibilant shuffling

silence was broken by the light laughter of a girl or by a broad phrase in dialect. But mostly people spoke under their breath. It was as though the quietness and peace of it affected the tone of voice. That such soft quietness could have anything to do with the war seemed the last thought.

### AND THE CARS

Turning a corner, however, it was revealed that not everybody had as yet realised the need for effective blackout. Here, from an open door, an unscreened light sent its shaft full across the roadway, there a badly hung blind revealed there was life within.

Most of the cars had so obscured their lighting that they had to drive with the utmost care, but now and again there came one which flashed on its headlights to the full and then as suddenly turned them off again—leaving the darkness darker than before. From a large room came a blaze of light—a whist drive in progress in a room with no lights screened.

In marked contrast the Drill hall, in Leeds Road (now occupied by Peter Blacks), apparently, was completely uninhabited. But as a sentry called a smart "Halt", and with equal smartness explained that the hall was closed to visitors.

There was reason for the darkness after all.

## ELECTION

### RESULTS

+ MAY 84

### Craven Ward

\*ERNEST HOARE (CON)

1963

G. Funnell (Lib-all) 1657

S. G. Best (Lab) 893

### Rombalds Ward

\*WINIFRED CLAVERING (CON) .. 2834

C. Svensgaard (Lib-all) 1236

J. T. Grogan (Lab) 964

### Ilkley Ward

A. K. BLANN (CON) .. 2445

Shelagh Moorhouse (Lib-all)

1706

S. Tatham (Lab) 447

## FORMER ILKLEY COUNCILLOR DIES SUDDENLY

A former Ilkley Urban District Councillor for many years, Mr John Robert Broadley, died suddenly at his home in Clifton Road, Ilkley, on Sunday.

Mr Broadley (62) who was born in Hull joined the R.A.F. during the war and then went into textile training after which he worked in Silsden, Skipton, and then locally as a textile agent.

He was a member of Ilkley Round Table and did much to help fund the starting of Ilkley Senior Citizens Club. Later he joined the Rotary Club, and he was founder Chairman of Ilkley Riding Club, and a Liberal councillor at Ilkley.

Mr Broadley was a keen walker, enjoyed fishing and was a member of Ilkley Golf Club.

He leaves a widow, two sons and a daughter.

A funeral service and cremation took place at Rawdon yesterday (Thursday).

### APPRECIATION

The following appreciation has been submitted by Mr. G. R. Vere:-

Those of us who knew John well had a warm regard for him, and are sad to hear of his passing.

His service in Ilkley Round Table and on the Ilkley Senior Citizens Executive Committee was always marked by his criticism of those who stood in the path of progress. He had the courage of his convictions and was not afraid to voice his opinion.

The first Chairman of Ilkley Senior Citizens Club when it was founded by Round Table 29 years ago, he always retained an active interest in it. He will be remembered as a very willing worker, for his cheery greeting, and someone on whom one could always rely. The community has lost a good friend. 11 MAY 84



# FEARS FOR FUTURE OF ILKLEY SWIMMING CLUB AS COUNCIL INTRODUCES LEVY

Ilkley Swimming Club — planning celebrations for its centenary next year — has been staggered by news which could force its closure.

The club fears that a levy being introduced by Bradford Metropolitan Council — on top of an increase in hire charges — may prove to be the last straw for many members.

As expected, the charge for hiring the Denton Road swimming pool from Bradford Metropolitan Council was increased in April. The charge has risen from £8.76 an hour to £10.00, and the club had budgeted to allow for an increase of these proportions. However, the blow has come with the news that the Council is also expecting all swimmers, spectators, instructors and other club officials to pay a levy of 15p. each time they enter the Denton Road pool.

Swimming Club members have already paid this year's subscriptions, but the levy takes immediate effect.

The club committee has agreed to stand the first two weeks' levies out of funds, the first week alone costing £20.40. Therefore, it was calculated, the club would have to find £1,200 per annum to cover the levies. If the club absorbed this kind of amount into its annual budget, by 1985 there would be no funds left in the bank.

At a meeting of older members and parents of younger swimmers, the club's Chairman, Mrs. Pam Clarke, explained the Council's demands.

## Income

Concern was expressed by several parents that some families with two or more members would not be able to keep their membership on and this, too, would ultimately affect the club's income. It was indicated that one family had four children in membership, nine families had three children and 25 families had two children, these numbers accounting for 50 per cent of swimmers at Denton Road.

Having started their swimming lessons at Ilkley Grammar School, children are moved to classes at Denton Road, where voluntary instructors develop swimming skills, in certain cases children being involved on more than one night each week. This would also add to the financial burden on certain families.

## A Bit Much

One parent commented that the increased hire charge was "fair enough", but added, "the 15p levy per head on top is a bit much." In reply to another parent, it was explained that there was no possibility of more swimming time at Ilkley Grammar School to relieve demands on Denton Road.

Following a show of hands of members likely to withdraw from membership as a result of the additional demand by the Council, the club secretary, Mrs. Margaret Smith, estimated a drop in membership by as much as one quarter. "We need more members to help cover costs, not less," she said.

It was emphasised that subscriptions were kept as low as possible, thanks to a subsidy available through the hard work of a tireless Social Committee, but an extra £1,200 per year was rather a lot to expect of them.

The feeling was expressed by a number of people that the Denton Road pool was "scandalously under-used", bearing in mind that the pool was always closed at holiday periods. "If it were not for Ilkley Swimming Club being there 42 weeks of the year, the pool would hardly be used," it was commented.

Summing up, Mrs. Clarke told members that the Council was even insisting that one of their attendants check the number of Swimming Club people who entered the building at each swimming session — and that included all the voluntary instructors, whose levy would total £20 each per year. "Bradford Council are really gunning for us," she added.

Representatives of all swimming clubs affiliated to the Amateur Swimming Association in the Bradford Metropolitan area met on Tuesday to discuss the Council's move.

## CHANGES TO LOCAL RAIL SERVICE

Regular local rail travellers will have to get used to a new timetable on the Wharfedale Line from Leeds and Bradford to Ilkley from next Monday (14 May).

Changes to the timetable include:-

The 1525, 1825 and 19.7 Leeds to Ilkley service will be re-timed to 1519, 1819 and 1919 respectively on pattern.

The 2150 Bradford Forster Square to Ilkley will be re-timed to 2230 arriving at Ilkley at 2300, to provide a more appropriate late evening train.

The 1800 Ilkley-Bradford will be re-timed to 1753.

The 1812, 1912, 2012 Ilkley-Leeds will be re-timed to 1805, 1900, 2000 respectively.

The 2000 Ilkley-Bradford will be re-timed to 1935, arriving at Bradford at 2006.

A reduction in the level of peak service provision on Saturdays to hourly is under consideration for introduction in October.

## 11 MAY 84 Christian Heritage Year Launched

Christian Heritage Year was launched with a service of thanksgiving in Westminster Abbey, at which Dr. Runcie, the Archbishop of Canterbury, spoke.

On Sunday congregations throughout the land are invited to remember their local, as well as their national, Christian Heritage.

Ilkley's Christian Heritage began in A.D. 627, and it is appropriate that the year should be marked by the bells chiming from Ilkley Parish Church. A peal of 720 changes will be rung at 3 p.m. on Sunday.

The start of the Year coincides with Christian Aid Week (May 14-19), which gives an opportunity for practical expression of responsibility to those in need.

## 11 MAY 84 MIDDLE SCHOOLS HIT BY TEACHERS' ACTION

Middle Schools in the Ilkley area were badly hit by the National Union of Teachers' Day of Action on Wednesday, with those at Addingham, Ilkley and Burley all closed for the day.

Spokesmen from Addingham and Burley said their N.U.T. members had gone to the union's meeting in Bradford, but Ilkley Middle School would not comment further.

Apart from Addingham 1st School, where most of the teaching staff are N.U.T. members, the primary schools were open as usual. There had been no picketing and head masters and non-N.U.T. members managed to keep the younger children at school as normal. Bolling Road School had to close the school to two classes as their teachers were striking but two classes were at school and the remaining class were out on a trip arranged some considerable time ago.

Mr. C. Allen, assistant headmaster at Ilkley Grammar School, said that the C.S.E. examinations and assessments now taking place had

gone on as usual, and that every effort was being made to ensure that examination pupils would not suffer. The school tried to follow the timetables, but where the class teachers were on strike children were having to be sent home. Dinners had been suspended at school apart from special cases. Free meals, meals for disabled pupils and a few others were still being provided, but the supervision was by "dinner ladies" and not by teachers. Most of the children were having to leave the school premises during the dinner break.

Mr. G. J. Edwards, at Burley 1st School, said the teachers' action underlined the dependence of the schools on the good-will of the staff, particularly where non-teaching activities were concerned.

Ties  
Ilkley  
greatly  
recent  
ioners  
Cathol  
ances.  
The  
and i  
memb  
church  
them  
service  
The

2.0  
the  
Mon  
Blac  
crick  
ente  
of t  
a ch  
T



## Christians From Coutances Visit Ilkley 11 MAY 84



Ties between Christians in Ilkley and Coutances were greatly strengthened during a recent visit by thirty parishioners from the Roman Catholic Cathedral of Coutances.

The French families, couples and individuals stayed with members of the various Ilkley churches, and accompanied them to Sunday morning service.

The two French priests con-

celebrated mass with Father Roche at the church of the Sacred Heart of Jesus on the Saturday evening, and Abbe Pierre Tournier read a lesson and pronounced the blessing at the Anglican service in All Saints Church on the Sunday morning.

Another ecumenical highlight occurred during a visit to York Minster. The group were welcomed by Rev. David Newton and taken to the

chapel of Unity in the Crypt, where the Lord's Prayer was said in French and English.

On the Monday evening a large group of people gathered for a discussion on the theme "Living in unity in 1984" and each community learned much from the other about the ways of dealing with current problems.

On the Sunday evening a Safari-style surprise supper was held in the homes of a

number of Ilkley Christians to the great enjoyment of all.

Already the Bishop of Coutances has invited Ilkley Christians to return the visit in 1985, and this occasion is eagerly awaited by the many Ilkley people who found the recent weekend such an enriching experience.

Picture shows the French group with Mr. Ron Beaver, the English organiser (left), shaking hands with the French organiser, M. Luc Sourdin.

## "GREAT DUCK RACE" RAISED £800 TOWARDS

11 MAY 84

### A GUIDE DOG FOR THE BLIND

2,000 plastic ducks took to the River Wharfe at Ilkley on Monday in the interval of the Black Hats v White Hats comic cricket match — and promptly entered into the carnival spirit of the day by milling round in a circle and refusing to race. Tickets had been sold to

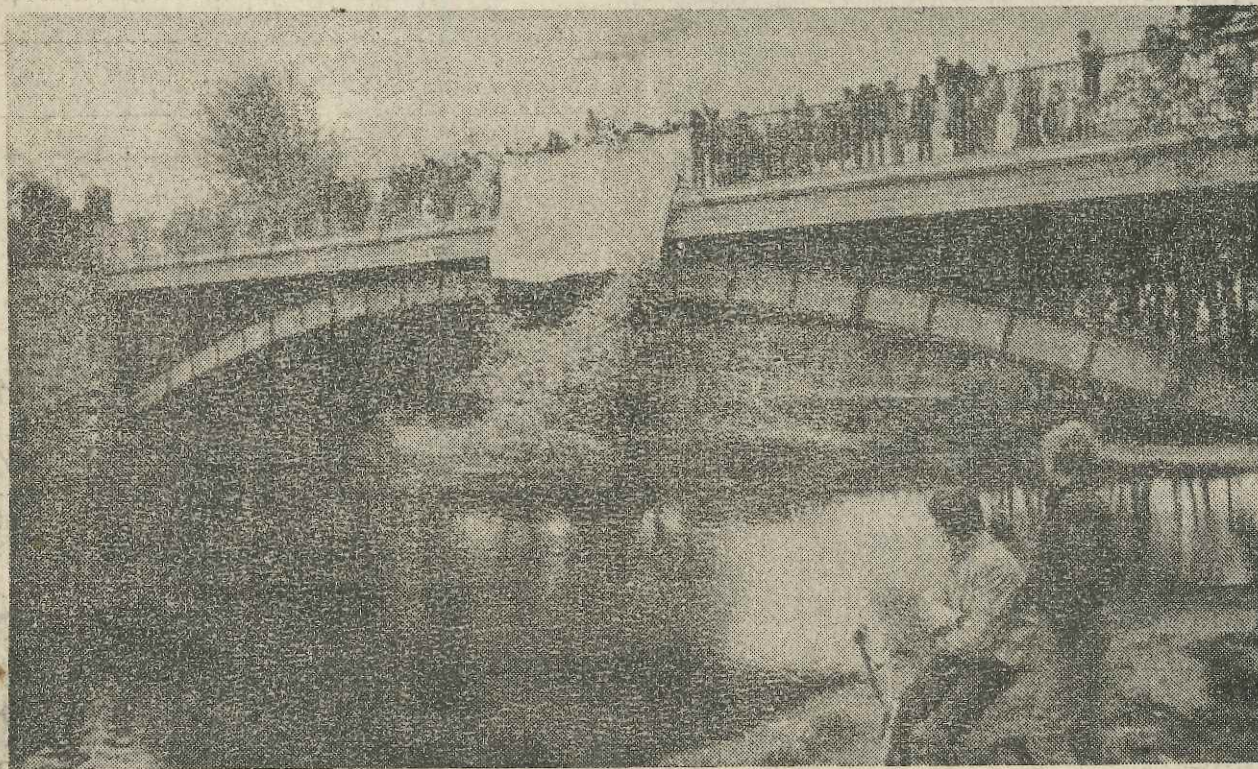
entrants who each sponsored a duck — the first six into a net further down the river being the winners. However for a time it looked as if the race might be a non-event. Eventually about 20 ducks broke free, though, and the leaders were then frantically pulled from

the water by wading members of the Wharfedale Lions Club.

A spokesman for the Lions Club, who organised the event, said there had been a fantastic response and the race had been greatly enjoyed by all who saw it. About £800 had been raised towards the £1,000

needed for a guide dog for the blind, and they were hoping the rest could be produced by a sponsored walk in June.

Picture shows the 2,000 plastic ducks being launched from the New Bridge at Ilkley on Monday.





## Plan For Car Park "Really Plumbs The Depths"

Sir,—Of all the outrageous planning applications to which Ilkley has been subjected recently, the one to turn the land at the corner of Bridge Lane/Church Street into a car park for Glovers Garage really plumbs the depths.

Some years ago Ilkley Gardeners raised a sum of money which was given to local schoolchildren to beautify an area of their choice. All Saints pupils chose to plant bulbs on this piece of land—with council knowledge and approval—and it must have been a source of pride to each one of them ever since.

For Glovers to be permitted to vandalise this area is unthinkable, and one would imagine a bad business proposition, considering how many of these schoolchildren must now be approaching the age of purchasing their first car!

Mrs. ANNE GRAHAM  
1 Chantry Close,  
Ilkley.

## Important Part Of Ilkley's Heritage

Sir,—Following your article concerning the proposed car park on the corner of Bridge Lane and Church Street, I would like to make the following points:-

1. The car park would not solve the problem of on-street parking in Bridge Lane. In my opinion one major cause of this is car users taking advantage of free parking near the town centre. There was little congestion when the central car park was free. If part of Bridge Lane was made suitable for parking by residents only, then congestion would be eased and the need for the development reduced.

2. The area in question will not be "improved" by the development as claimed. If trees are required for screening, they will hide something obviously inferior to the existing area.

3. Parking provision for four local residents is, I suggest, of advantage mainly to the developer if it takes those residents' cars away from the busy activities around the garage area.

4. The steep banks and cuttings proposed will much increase the safety hazard for children and elderly residents. Of particular concern is the potential use of the area by BMX cycle fans.

In conclusion your article states that the car park would be a "better use of the land" Certainly better for the continued growth of a commercial enterprise, but at what cost to a small but important part of Ilkley's heritage.

D. R. GILL  
9 Bridge Lane,  
Ilkley.

## Gratitude Of Ilkley Talking Newspaper

Sir,—May I through the courtesy of your newspaper and on behalf of the committee of the Ilkley Talking Newspaper, acknowledge our gratitude to Bradford Metropolitan Council, which has made over a share of its annual Community Budget to our work?

For the maintenance of our weekly taped news-service we have to rely on a steady flow of donations, but this grant of £1,200 has been given to help forward our aim to improve the sound-proofing of our studio at the rear of The Music Shop in Leeds Road.

There is no doubt that what influenced this award when an official of the council came to examine our premises and organisation, was the evidence of how much our community had already been prepared to do for itself. Your readers too might like to know that in a seven-week rota period we enjoy the faithful support of over one hundred voluntary workers - technicians, readers, distributors and fund-raisers.

May I add that this impressive figure still leaves room for anyone who yet wants to join us? We are always pleased to welcome those who think our project worthwhile and fee able to take some part in it. Every Saturday morning, sixty-three tapes are delivered personally, five of these being to groups in hospitals and residential homes, covering the area from Menston through to Addingham. This free service, including where necessary the loan of a cassette player, is available to anyone who through disability cannot read a newspaper. We watch our list of 'listeners' grow and are thankful that we no longer have to say "Wait".

So thanks, and thanks again, to the Press, to Bradford Council, to voluntary workers, to the shop, which in addition to being our host also acts as a message exchange, to donors, covenants and all

Mrs. KATHLEEN NEWMAN  
33 Bridge Lane,  
Ilkley.

## Fouling Of Paths

Sir,—In reply to the letter from Mr. B. R. Jewell, in your edition of 19 April, 1984, I have to agree with him that the fouling of footpaths by dogs is a problem not only in the Ilkley Area but throughout the country as a whole.

In this authority's area, there is a bye-law which makes it an offence for any person in charge of a dog to allow the dog to "foul the footway of any street or public place by depositing its excrement thereon".

In order to take proceedings under this bye-law, therefore, it is necessary to have evidence as to who was in charge of the dog, the time the offence was committed and the location of the offence.

If any member of the public can provide this information to the Council, I can assure them that the evidence will be presented to the Council's City Solicitor with a view to taking legal proceedings.

J. R. HOBSON,  
District Manager  
Environmental Health Office  
Ilkley Town Hall.

## "Storm In A Tea Cup" At Day Centre

Sir,—We strongly object to the diktat imposed by the Management Committee at the Day Centre, enforcing the serving of tea and coffee with the addition of the vile tasting UHT milk or cream.

It is said that this for a trial period of three months, but I think that this practice will be found to be permanent.

What was a happy, relaxed atmosphere is now one of resentment.

G. WELTON and  
C. WELTON

6 Belle Vue,  
Ilkley.

● Mr. G. R. Vere, Management Committee Chairman, said, "Unfortunately your correspondent does not appear to be in possession of the facts. Action by the Management Committee arose out of a reappraisal of catering and hygiene standards, and in this we have the full backing of the Area Environmental Health Service.

Improvements are instituted for two sound reasons—for the benefit of patrons, and to cause less work for all those who so willingly give of their spare time for the well-being of others.

"It is illogical to imply that small containers of milk have caused an adverse effect on the atmosphere within the Day Centre. Although we cannot possibly hope to cater for everyone's tastes, our aim is to provide the highest possible standard of hygiene, and most people appreciate this fact.

"Misleading statements can do much harm. Who would have thought that a genuine desire to improve service would have produced this storm in a tea cup!"