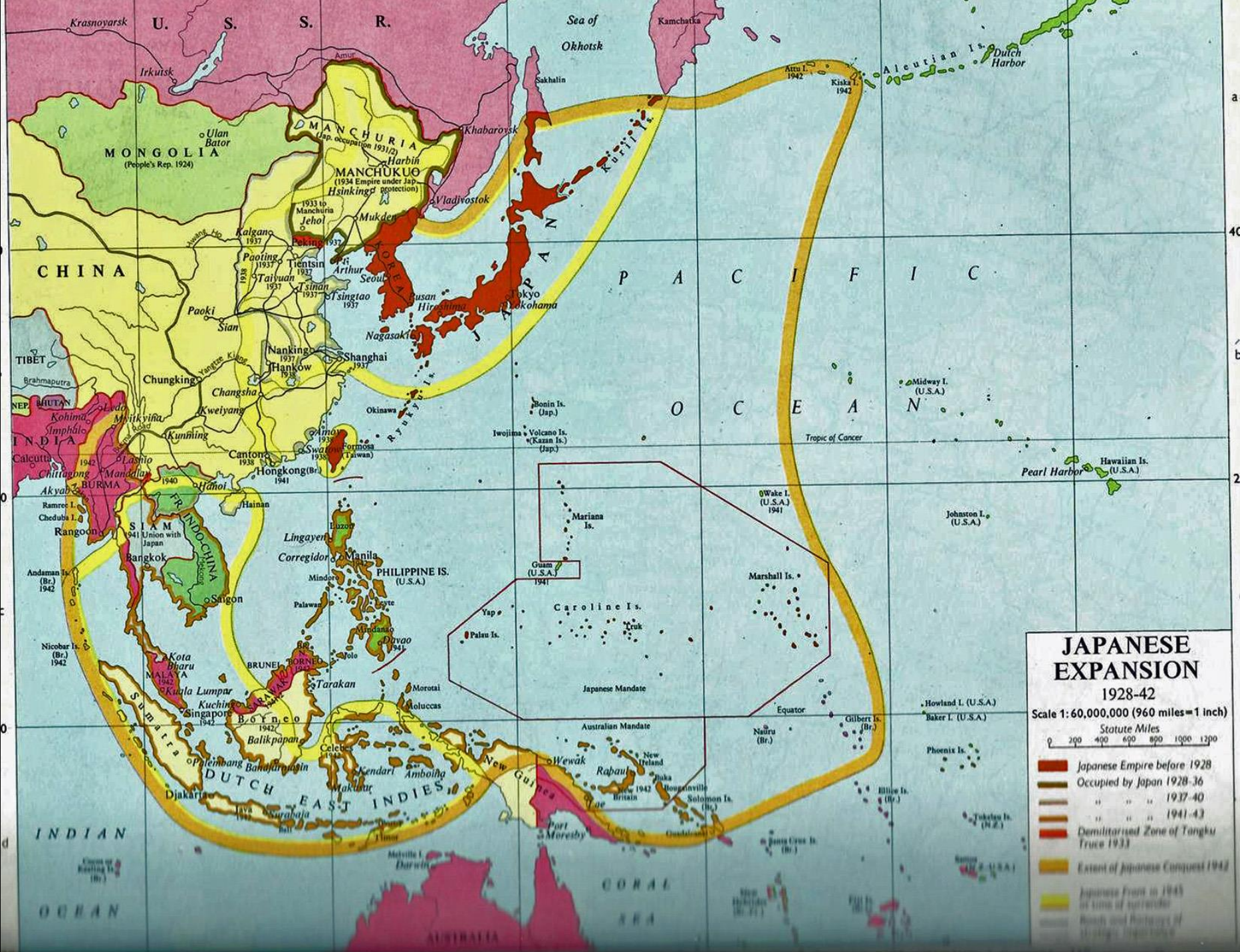


The Burma-Siam Railway



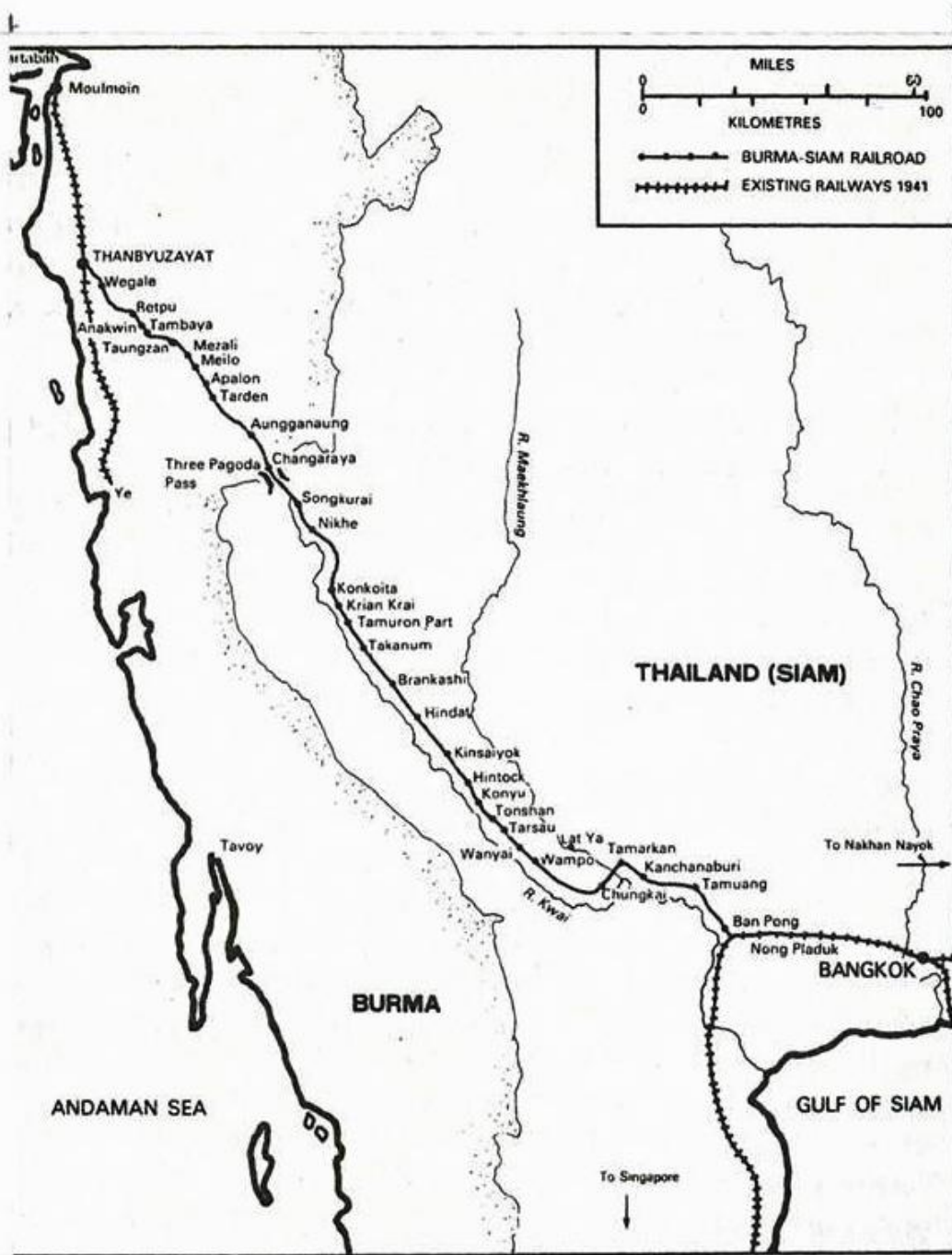
JAPANESE EXPANSION

1928-42

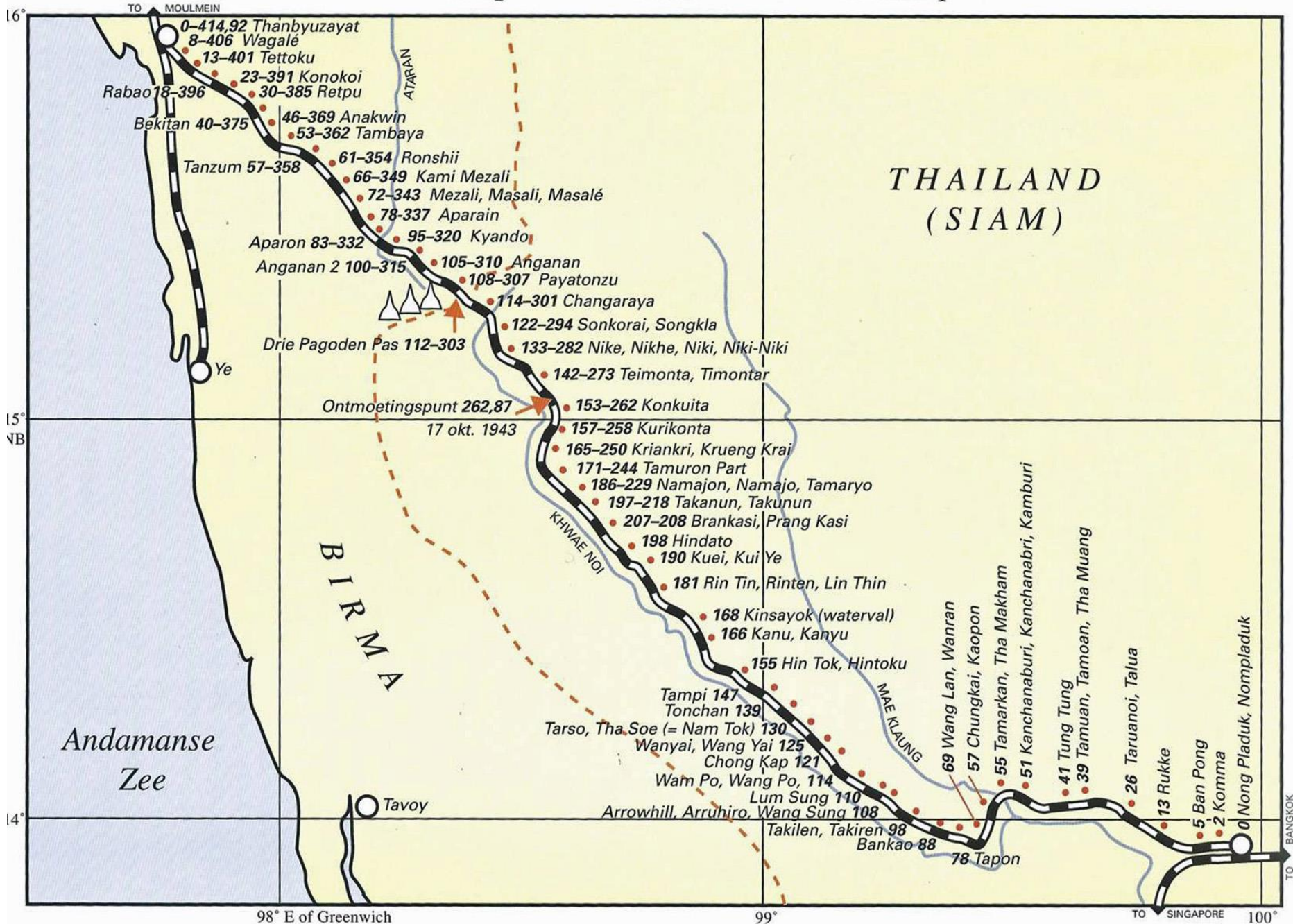
Scale 1:60,000,000 (960 miles=1 inch)



- Japanese Empire before 1928
- Occupied by Japan 1928-36
- " " " 1937-40
- " " " 1941-43
- Demilitarized Zone of Tangku Truce 1933
- Extent of Japanese Conquest 1942
- Japanese Front in 1942
- Boundaries and Portages of Strategic Importance



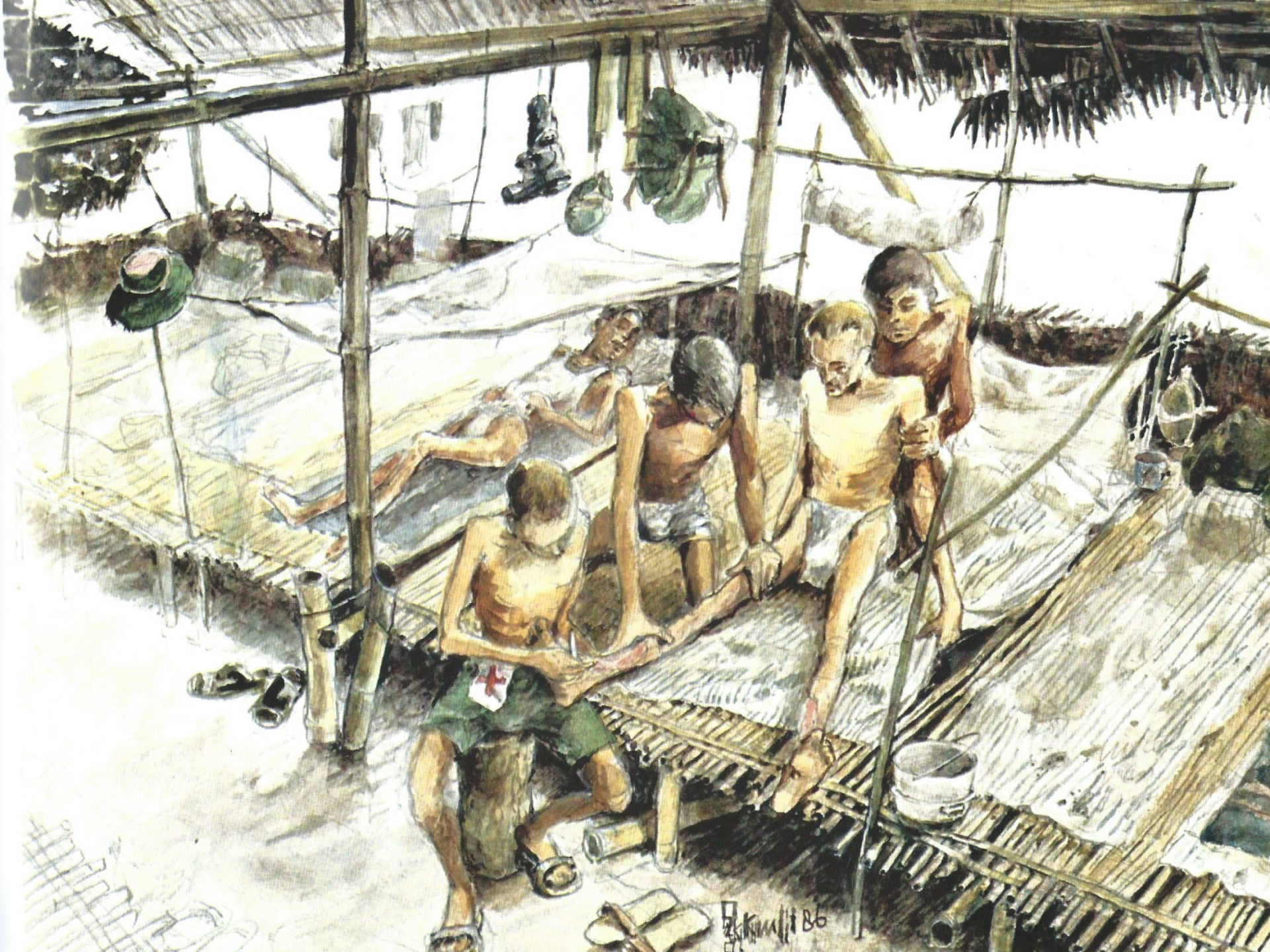
POW Camps of the Burma-Siam Railway



- December 1941 Pearl Harbor
- June 1942 0 km post
- Jan 1943 Speedo begins
- Oct 1943 Railway completed
- March 1944 Japanese offensive against Imphal
- November 1944 British advance into Burma
- June 1945 Tha Makham bridges destroyed
- Aug 1945 War ends



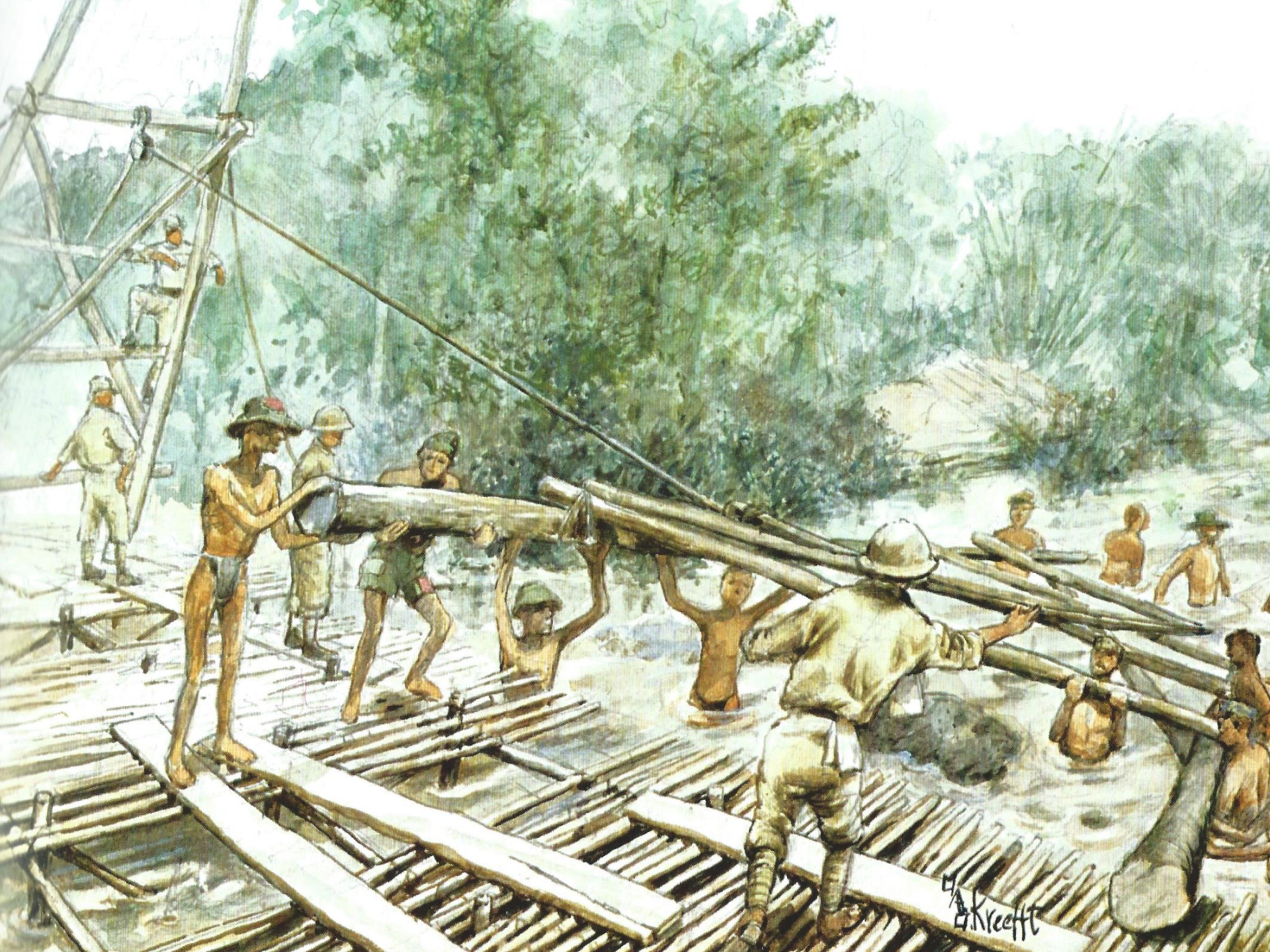




86









Kresfft 88

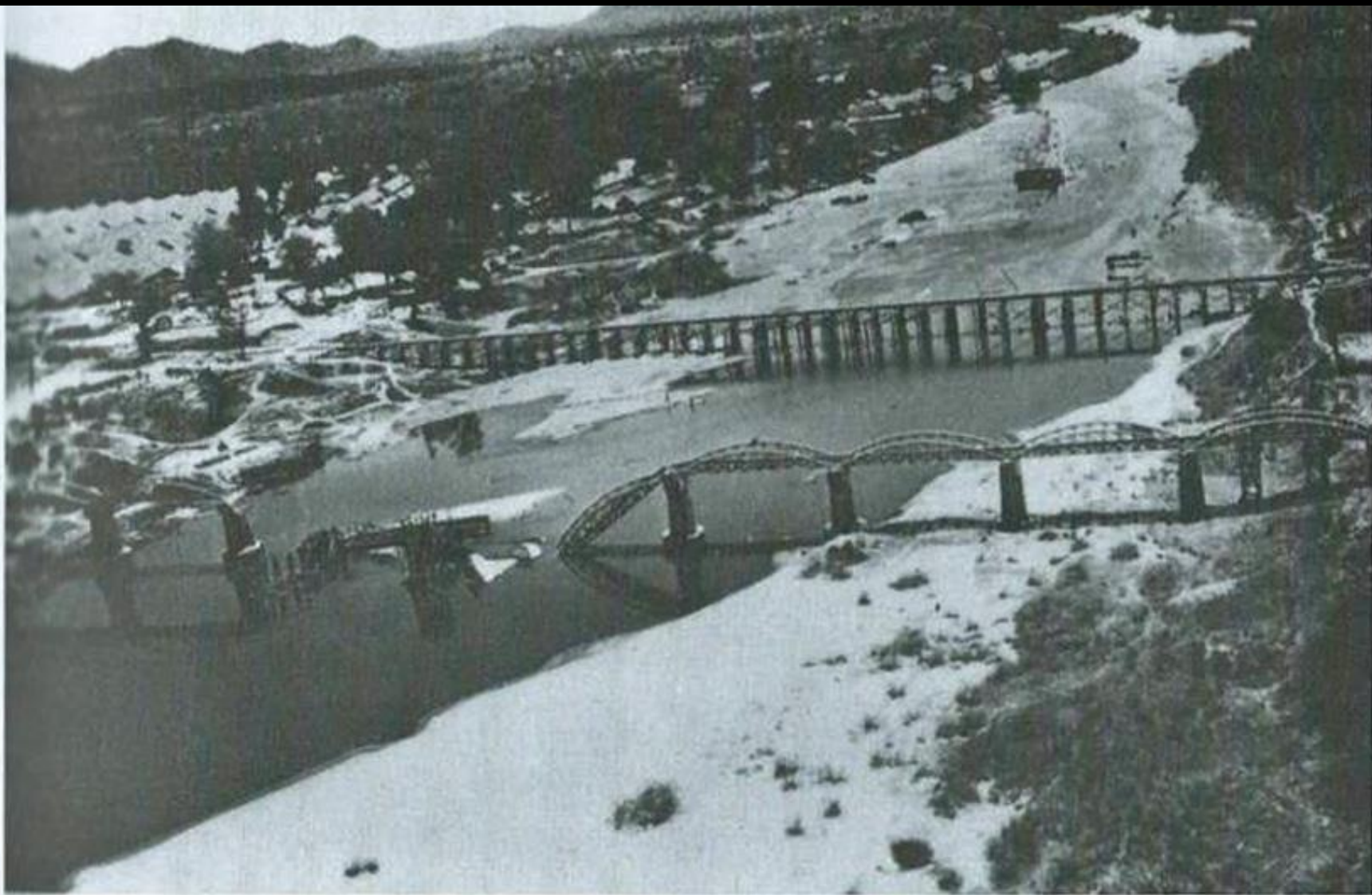
Japanse spoor
weg project
Bouwen van





702





RAF reconnaissance photograph showing the destroyed steel bridge at Tha Makham after the 24 June air raid. The wooden bridge damaged in the same attack has been repaired.

The human cost

Nationality	POWs	deaths	% rate
British	30,131	6,904	23%
Australian	13,004	2,802	22%
Dutch	17,990	2,782	15%
American	686	133	19%
Asian	300,000 ?	150,000 ?	50% ?
Japanese	12,000	1,000	8%



