An aerial, black and white photograph of the St. Pancras area in London. The image shows a dense urban environment with numerous buildings, streets, and railway tracks. The St. Pancras Station building is prominent in the center, with its distinctive architecture. The surrounding area is filled with residential and commercial buildings, creating a complex pattern of rooftops and streets. The overall scene captures the historical and industrial character of the area.

The Rise, Decline & Rebirth of St. Pancras Station London





SOMERS TOWN

EUSTON

PANCRAS INT

PANCRAS

BUS STA

BRITISH LIB

MORNINGTON CRESCENT

LONDON STUDIOS KING'S CROSS

Coll. ROAD

HAMPSTEAD ROAD

PANCRAS ROAD

EUSTON STREET

BRIDBOROUGH ROAD

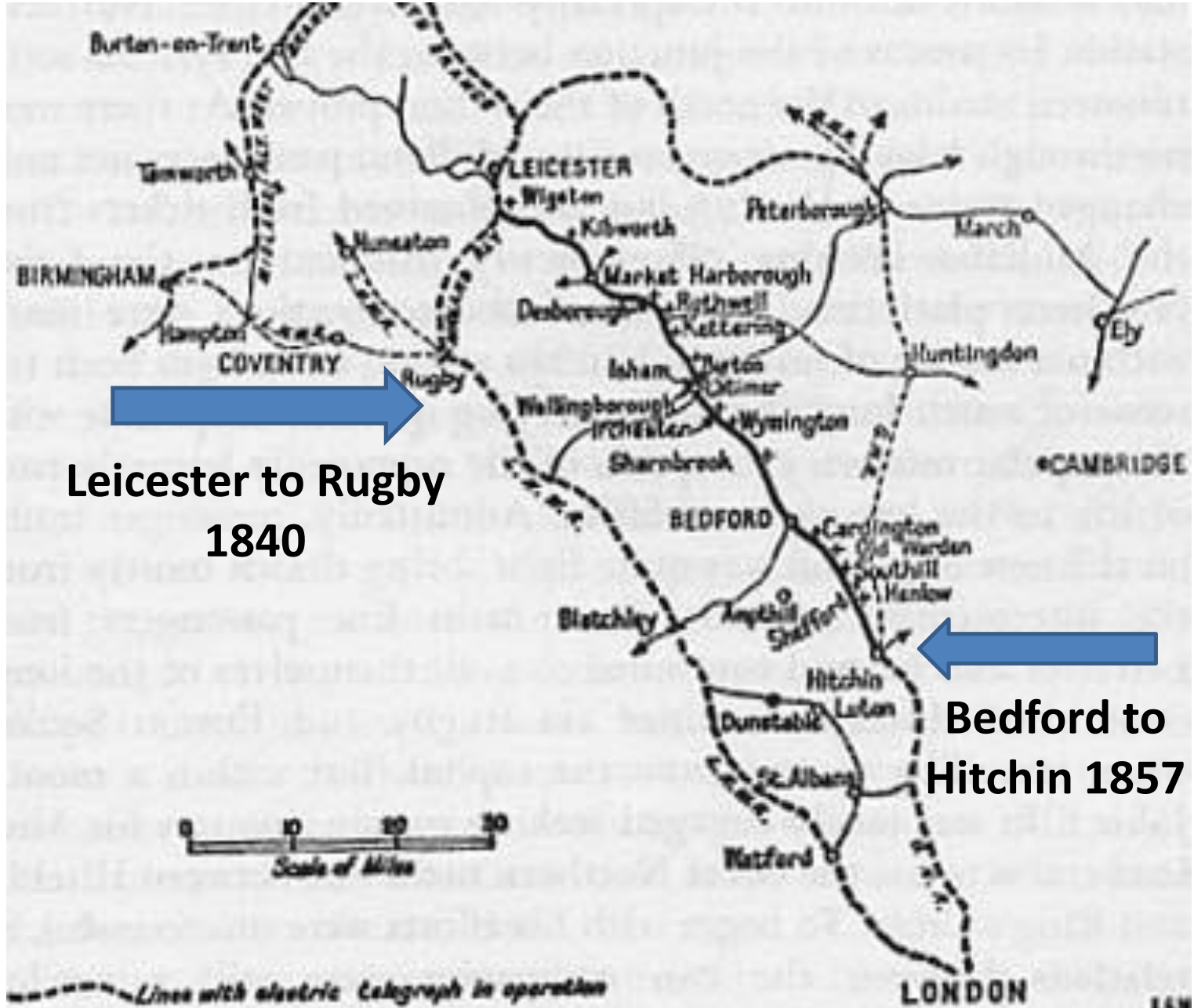
COBOURG STREET

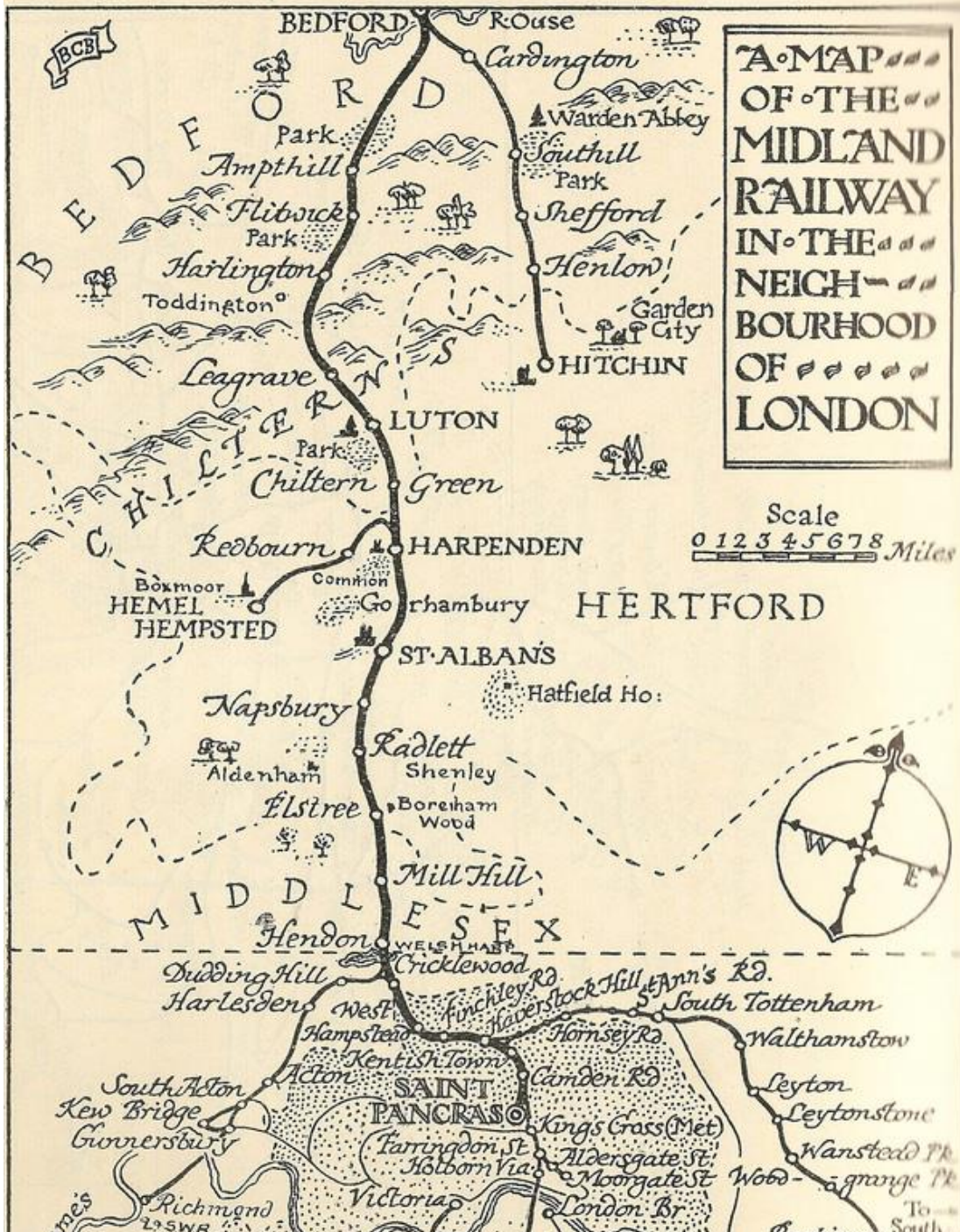
JUDD STREET

This Presentation Covers

- **Why build a station & hotel at this location**
- **Victorian Design & Construction**
- **Architects & Engineers Involved**
- **Decline of Station & Hotel**
- **Why St. Pancras became St. Pancras International**
- **Redeveloped Station**
- **Redeveloped Hotel**

Why build a new railway to London

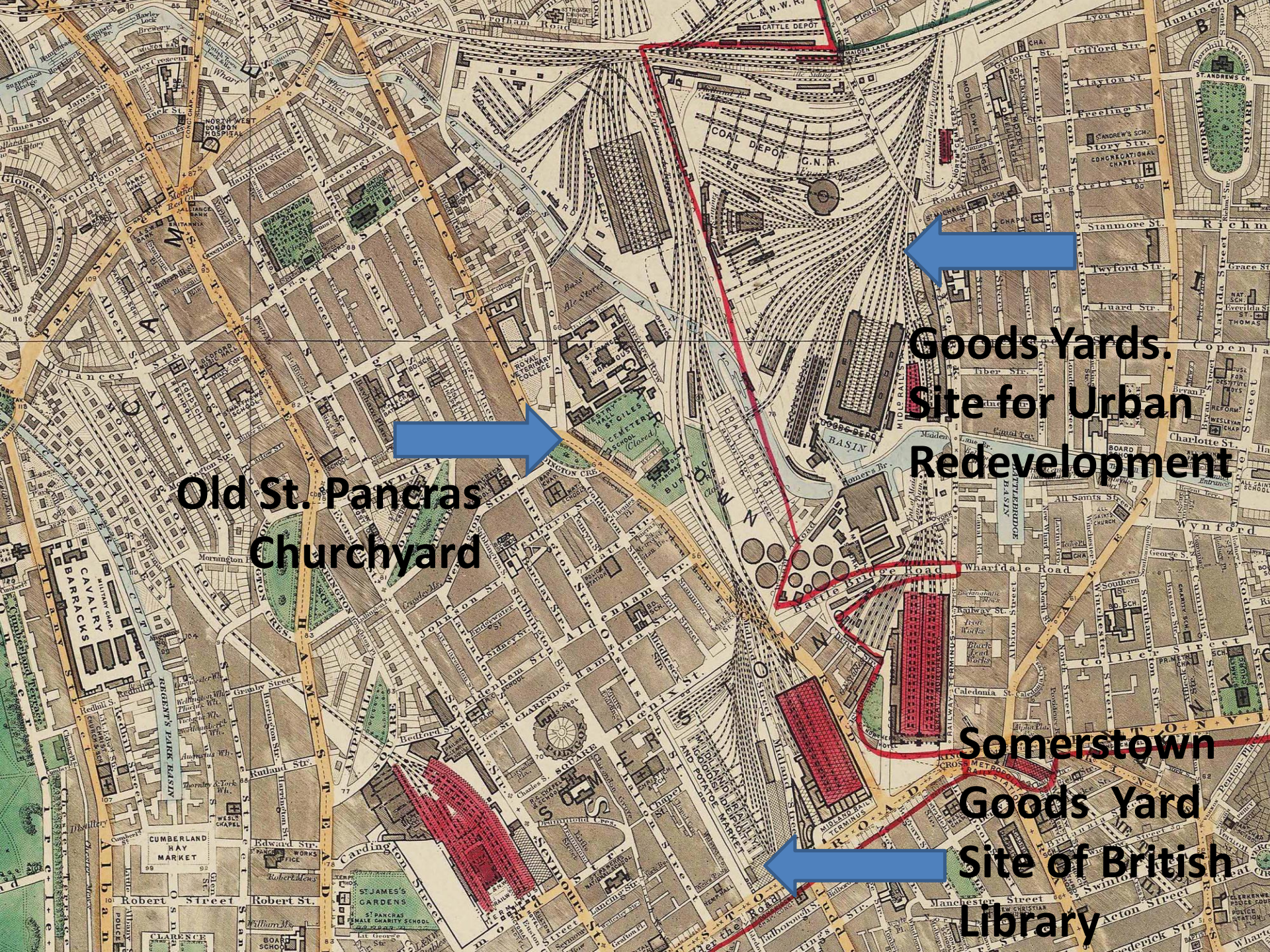




A MAP OF THE MIDLAND RAILWAY IN THE NEIGHBOURHOOD OF LONDON

Scale
0 1 2 3 4 5 6 7 8 Miles

BEDFORD
Rouse
Cardington
Warden Abbey
Southill Park
Sheffield
Henlow
Garden City
HITCHIN
Leagrave
LUTON
Chiltern Green
HARPENDEN
Hertford
Hemel Hempstead
Napsbury
Radlett
Shenley
Elstree
Boreham Wood
Mill Hill
Middlesex
Hendon
Cricklewood
Walthamstow
Leyton
Leytonstone
Wanstead Pk
Wood-grange Pk
London Br
Victoria
Farringdon St
Holborn Vias
Aldersgate St
Moorgate St
Kings Cross (Met)
Camden Rd
Hornsey Rd
Haverstock Hill
Archley Rd
West Hampstead
Kentish Town
Acton
South Acton
Kew Bridge
Gunnersbury
Richmond
WELSH HART
ANN'S RD
SOUTH TOTTENHAM
WALTHAMSTOW
LEYTON
LEYTONSTONE
WANSTEAD PK
WOOD-GRANGE PK
LONDON BR
VICTORIA
FARRINGDON ST
HOLBORN VIAS
ALDERSGATE ST
MOORGATE ST
KINGS CROSS (MET)
CAMDEN RD
HORNSEY RD
HAVERSTOCK HILL
ARCHLEY RD
WEST HAMPSHIRE
KENTISH TOWN
ACTON
SOUTH ACTON
KEW BRIDGE
GUNNERSBURY
RICHMOND
WELSH HART
ANN'S RD
SOUTH TOTTENHAM
WALTHAMSTOW
LEYTON
LEYTONSTONE
WANSTEAD PK
WOOD-GRANGE PK
LONDON BR
VICTORIA
FARRINGDON ST
HOLBORN VIAS
ALDERSGATE ST
MOORGATE ST
KINGS CROSS (MET)
CAMDEN RD
HORNSEY RD
HAVERSTOCK HILL
ARCHLEY RD
WEST HAMPSHIRE
KENTISH TOWN
ACTON
SOUTH ACTON
KEW BRIDGE
GUNNERSBURY
RICHMOND



**Old St. Pancras
Churchyard**

**Goods Yards.
Site for Urban
Redevelopment**

**Somerstown
Goods Yard
Site of British
Library**





St. Pancras Old Church

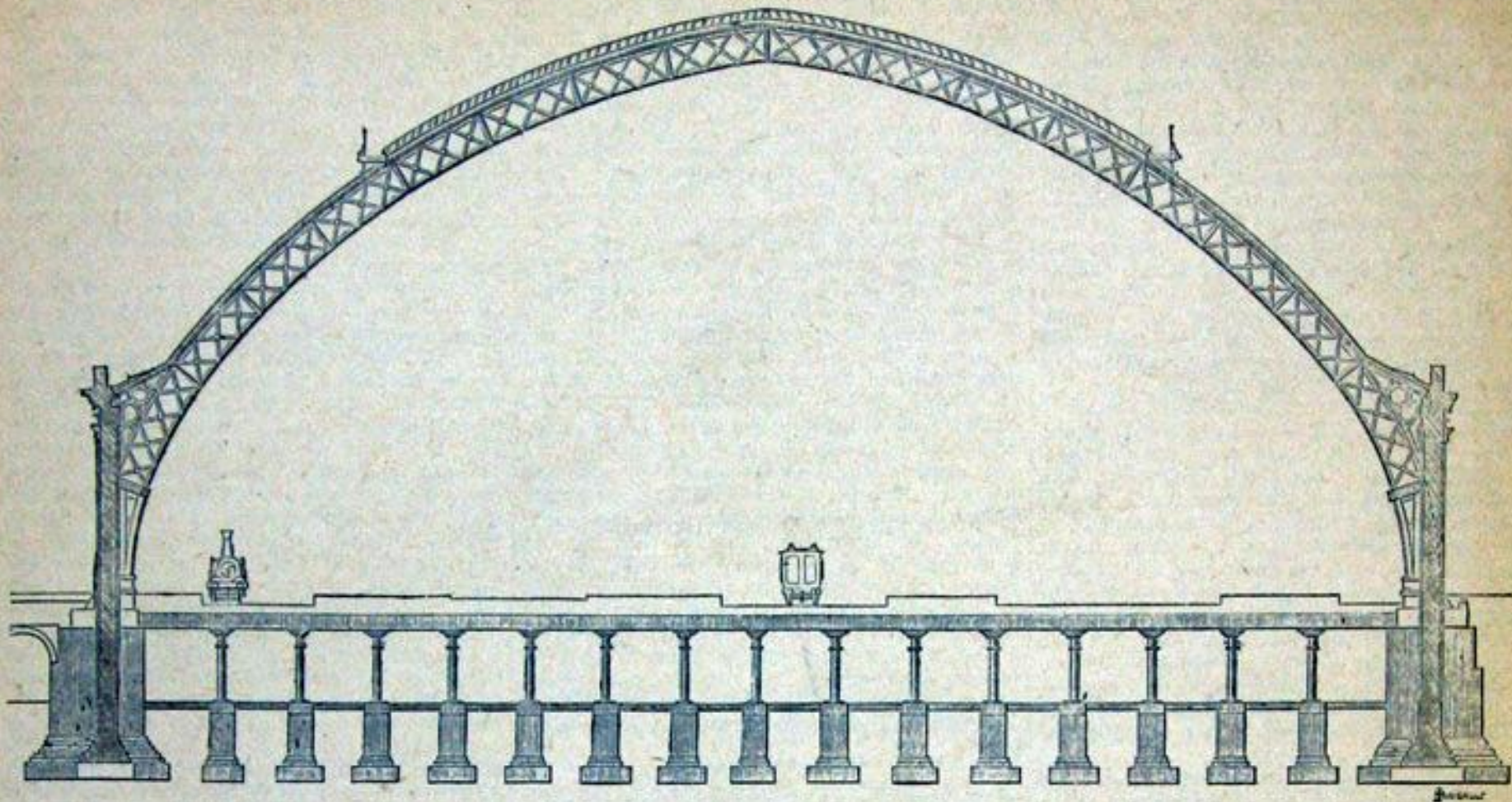


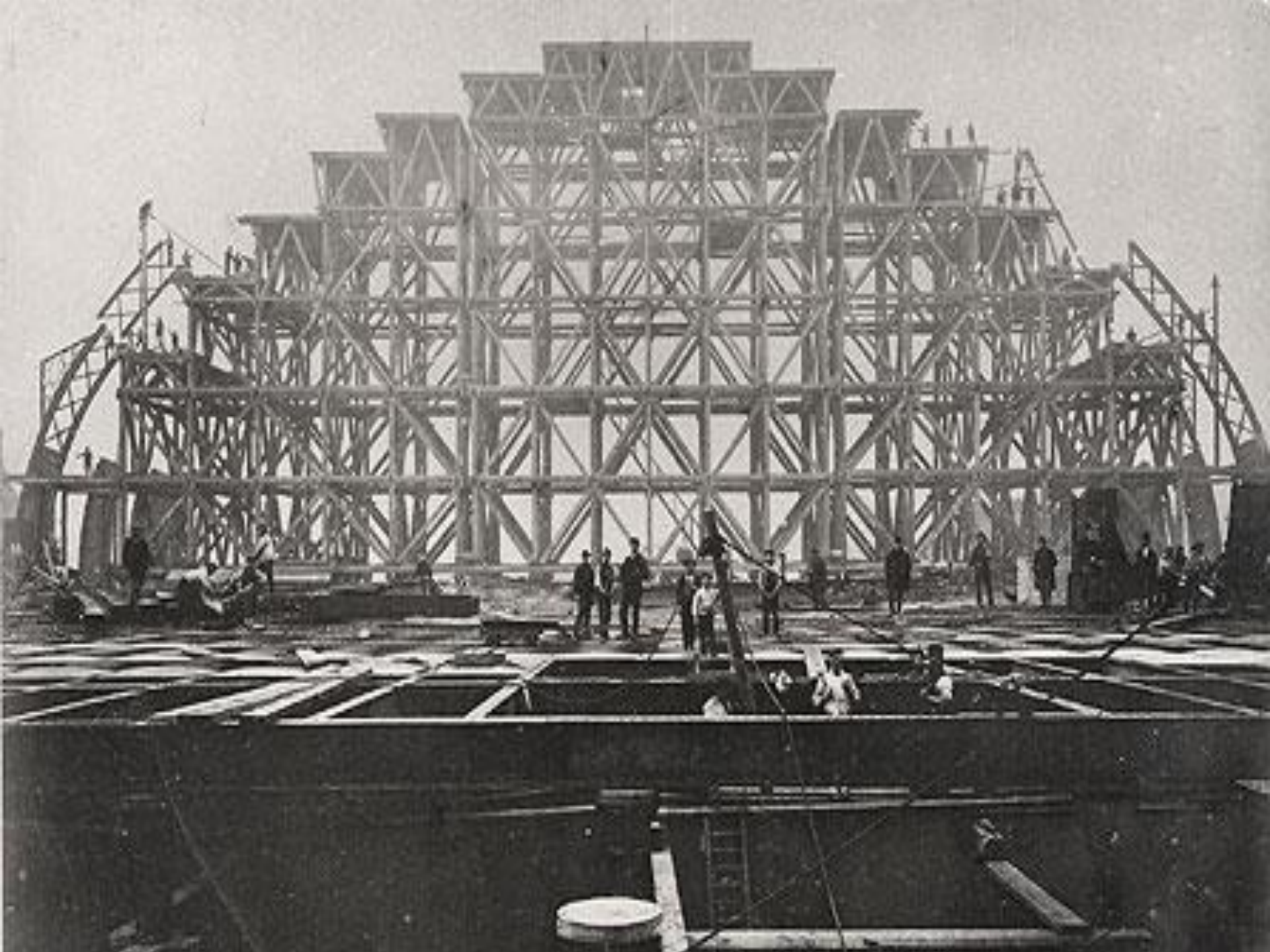




Design & Construction

ROOF OF THE SAINT PANCRAS STATION—MIDLAND RAILWAY.

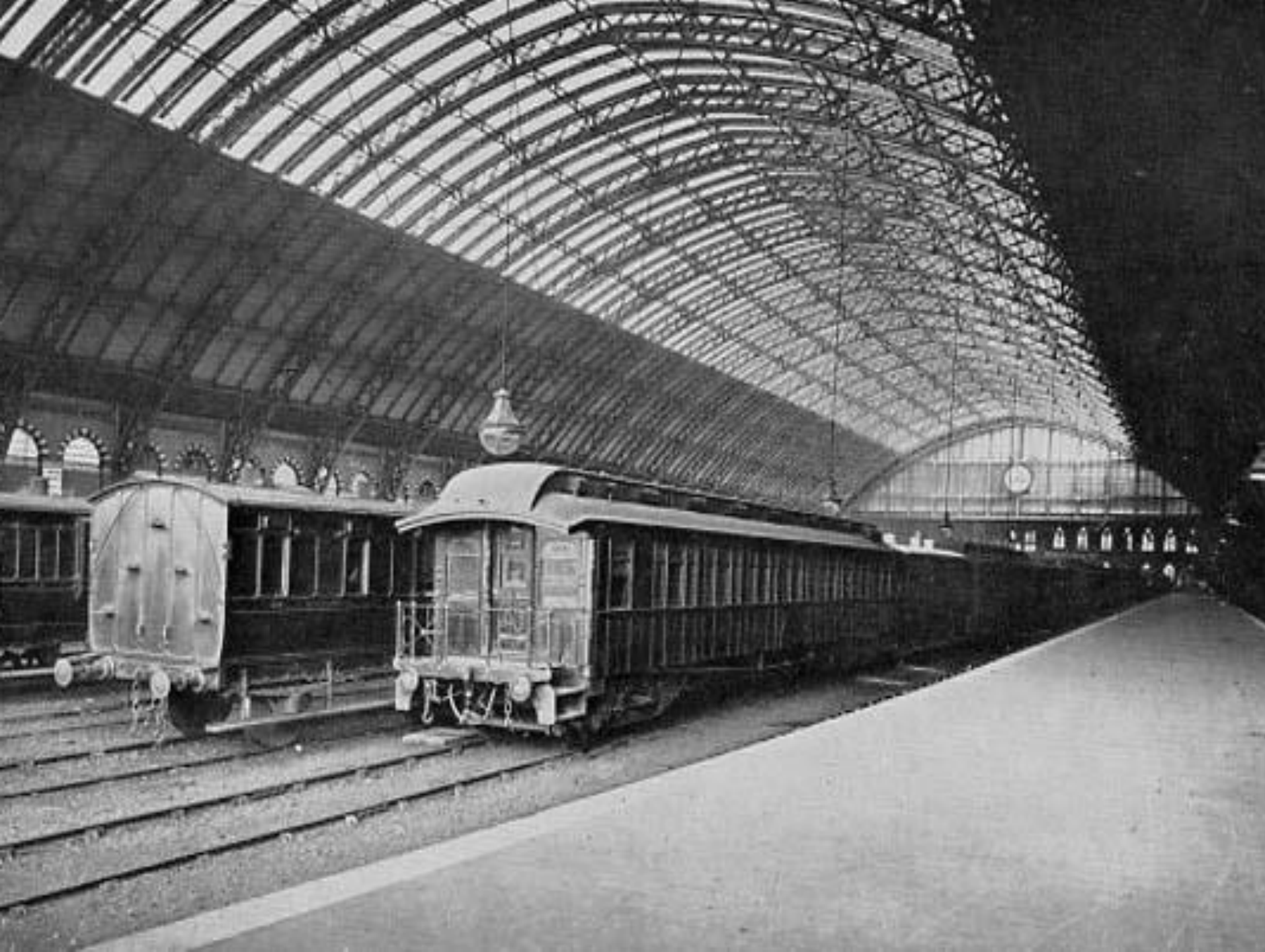












**In commemoration of the
First Pullman Car service in Britain**

**On 1st June 1874,
the first Pullman train in Great Britain
left this station for London, St Pancras**

THE PULLMAN SOCIETY

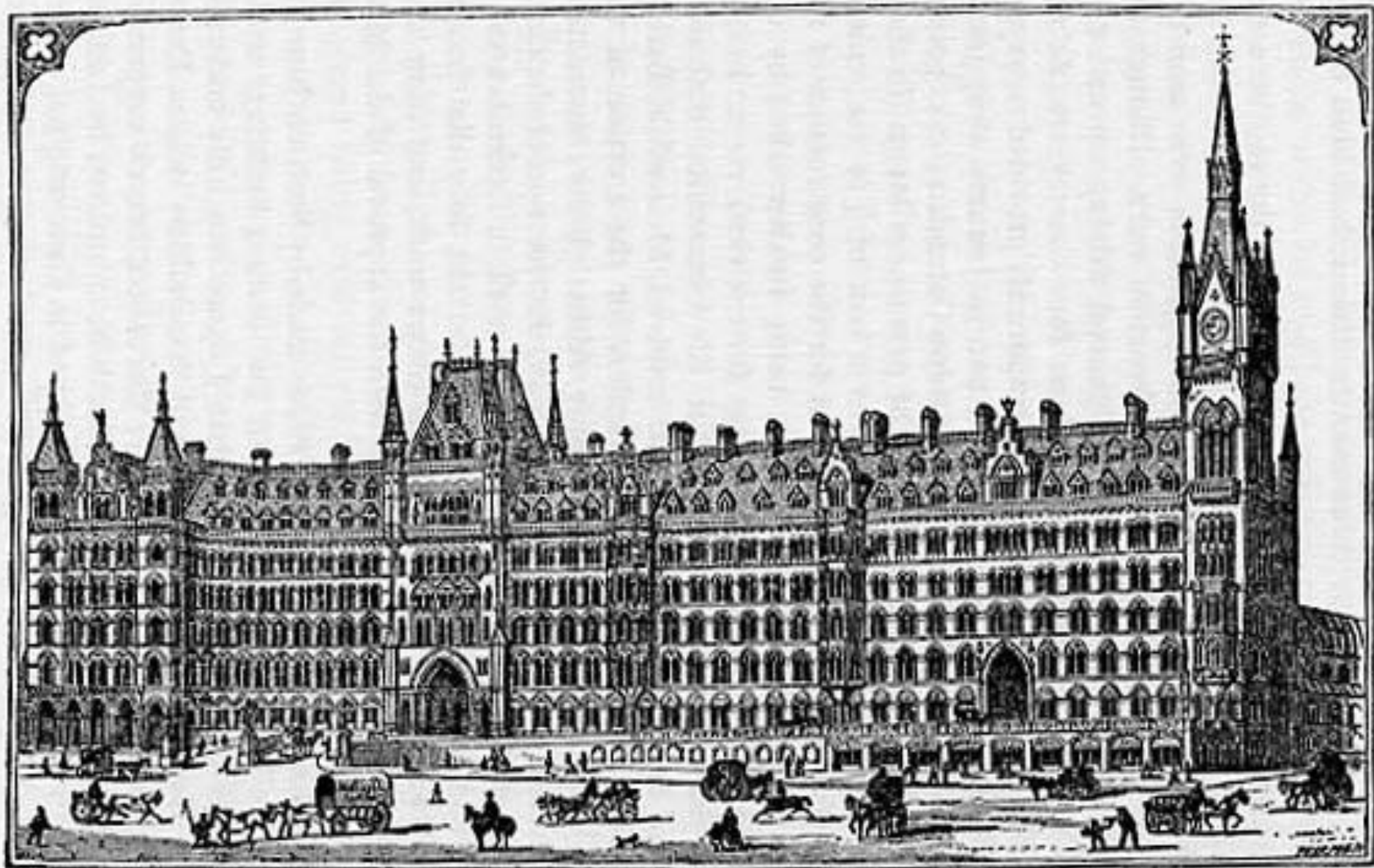






OLAND RAILWAY
BRIDGE ST. COAL DEPOT





40. The Midland Grand Hotel, St. Pancras, as it appeared in 1873

Financial Crisis 1866

Overend Gurney & Co (wholesale discount bank) fails owing £11 Million (£981m today)

Last run on a UK bank until Northern Rock

UK. Interest rates increase to 10%

Several railway companies go bankrupt

Midland has to cut costs & expansion plans.



SUPERB:
COMFORTABLE
ECONOMICAL



SHILLING CAB FARES
TO NEARLY ALL THEATRES
BUSINESS & WEST-END
CENTRE

MIDLAND GRAND HOTEL

LONDON · NW.

W Towle,
MANAGER.



ARTESIAN WELL WATER
ELECTRIC
LIGHT



AWAY FROM THE RIVER FOGS.
CLOSE TO CUSTOMS
&
KINGS-CROSS

















GOING NORTH ?



ST PANCRAS

Architects & Engineers

William Henry Barlow
(1812 – 1902)



Sir George Gilbert Scott
(1811 – 1878)



Rowland Marsh Ordish
1824 - 1886

The Years of Decline







Years of Decline

1902

Only 150 train movements per day

Years of Decline

1902

Only 150 train movements per day

1923

Midland Railway becomes part of LMS, now with two London termini in close proximity

Years of Decline

- 1902** Only 150 train movements per day
- 1923** Midland Railway becomes part of LMS, now with two London termini in close proximity
- 1935** Midland Grand Hotel closes

Years of Decline

- 1902** Only 150 train movements per day
- 1923** Midland Railway becomes part of LMS, now with two London termini in close proximity
- 1935** Midland Grand Hotel closes
- 1960s** Electrification of track West Coast line

Years of Decline

- 1902** Only 150 train movements per day
- 1923** Midland Railway becomes part of LMS, now with two London termini in close proximity
- 1935** Midland Grand Hotel closes
- 1960s** Electrification of track West Coast line
- 1966** BR campaign to run all remaining services via King's Cross

Years of Decline

- 1902** Only 150 train movements per day
- 1923** Midland Railway becomes part of LMS, now with two London termini in close proximity
- 1935** Midland Grand Hotel closes
- 1960s** Electrification of track West Coast line
- 1966** BR campaign to run all remaining services via King's Cross
- 1967** St. Pancras designated Grade 1 listed building

Years of Decline

- 1902** Only 150 train movements per day
- 1923** Midland Railway becomes part of LMS, now with two London termini in close proximity
- 1935** Midland Grand Hotel closes
- 1960s** Electrification of track West Coast line
- 1966** BR campaign to run all remaining services via King's Cross
- 1967** St. Pancras designated Grade 1 listed building
- 1988** Removal of local Bedford services, now to run via King's Cross Thameslink

Years of Decline

- 1902** Only 150 train movements per day
- 1923** Midland Railway becomes part of LMS, now with two London termini in close proximity
- 1935** Midland Grand Hotel closes
- 1960s** Electrification of track West Coast line
- 1966** BR campaign to run all remaining services via King's Cross
- 1967** St. Pancras designated Grade 1 listed building
- 1988** Removal of local Bedford services, now to run via King's Cross Thameslink
- 1993** BR obliged to spend £9m to maintain buildings in weatherproof state





SUNSHINE ROOM
ANGEL FRANKLINTLEY

MIDLAND GRAND HOTEL









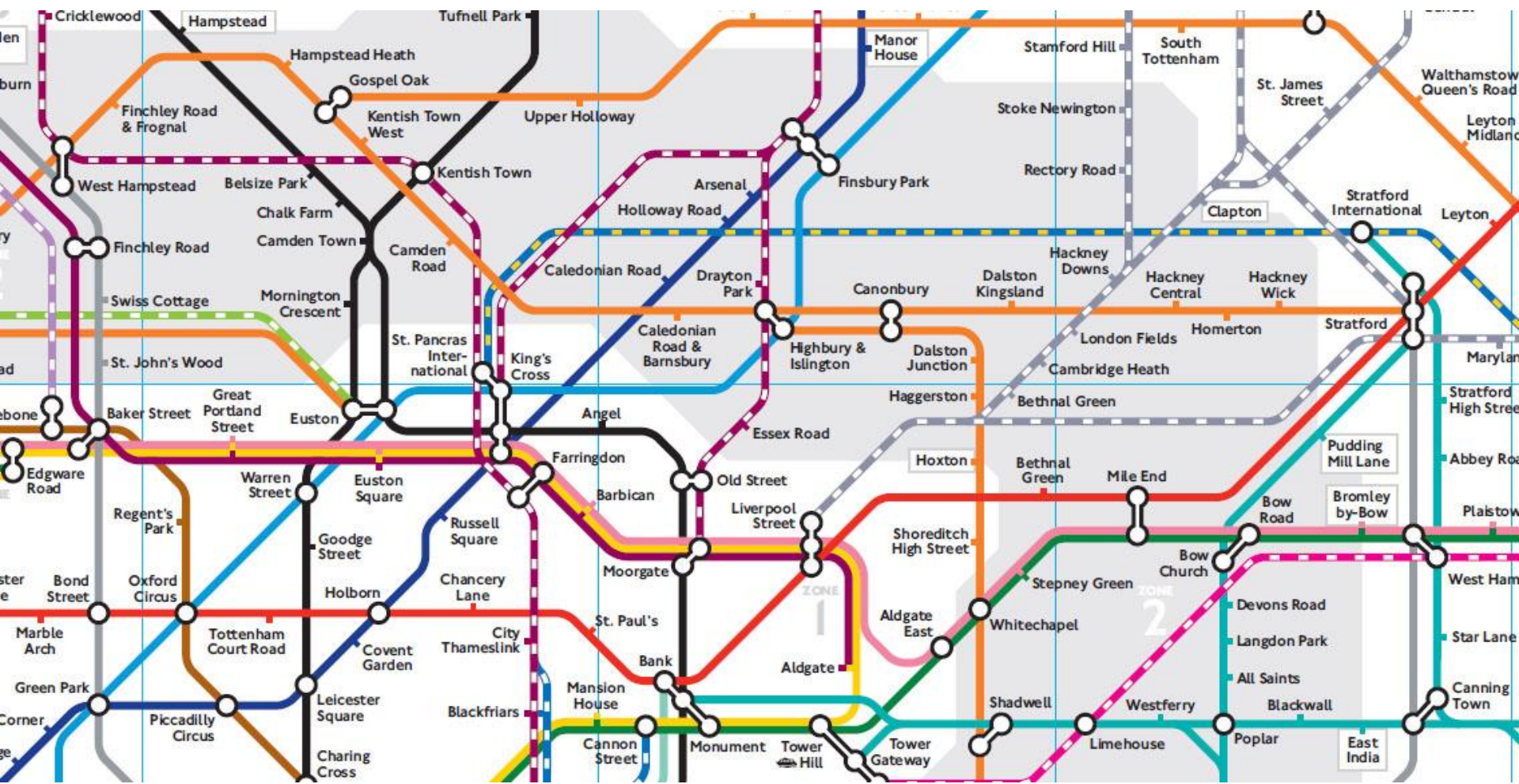






Why St. Pancras became St. Pancras International





Station Platform Allocation

Platform	Designation	Operator	Destinations
1 - 4	MML Domestic	East Midland	Leicester, Nottingham, Derby, Sheffield
5 - 10	HS 1 International	Eurostar	Lille, Paris, Brussels. Soon to include Amsterdam, Cologne & Frankfurt
11- 13	HS 1 Domestic	South-Eastern	Stratford, Ebbsfleet, Medway Towns, East Kent. Olympic service in 2012
A & B	Thameslink	First Capital Connect	<u>North</u> : St. Albans, Luton & Bedford <u>South</u> : Sutton, Gatwick, Brighton More in 2018 when 12 car trains will run up to 24 times every hour.



Mornington Crescent

King's Cross St. Pancras

Euston

Angel

Old Street

Warren Street

Euston Square

Farringdon

Live Street

Park

Russell Square

Barbican

Goodge Street

Chancery Lane

Moorgate

Tottenham Court Road

Holborn

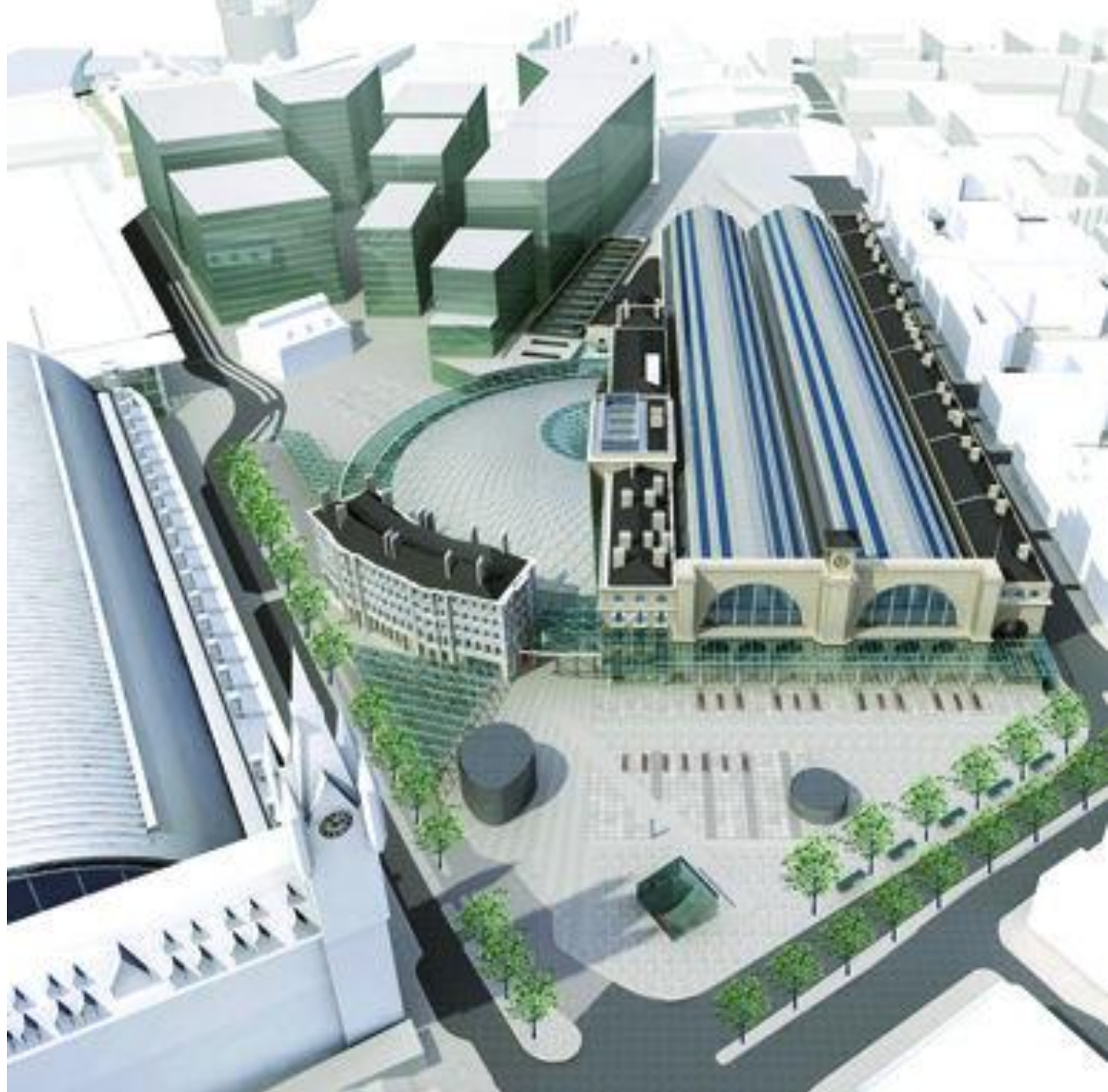
St. Paul's

Bank

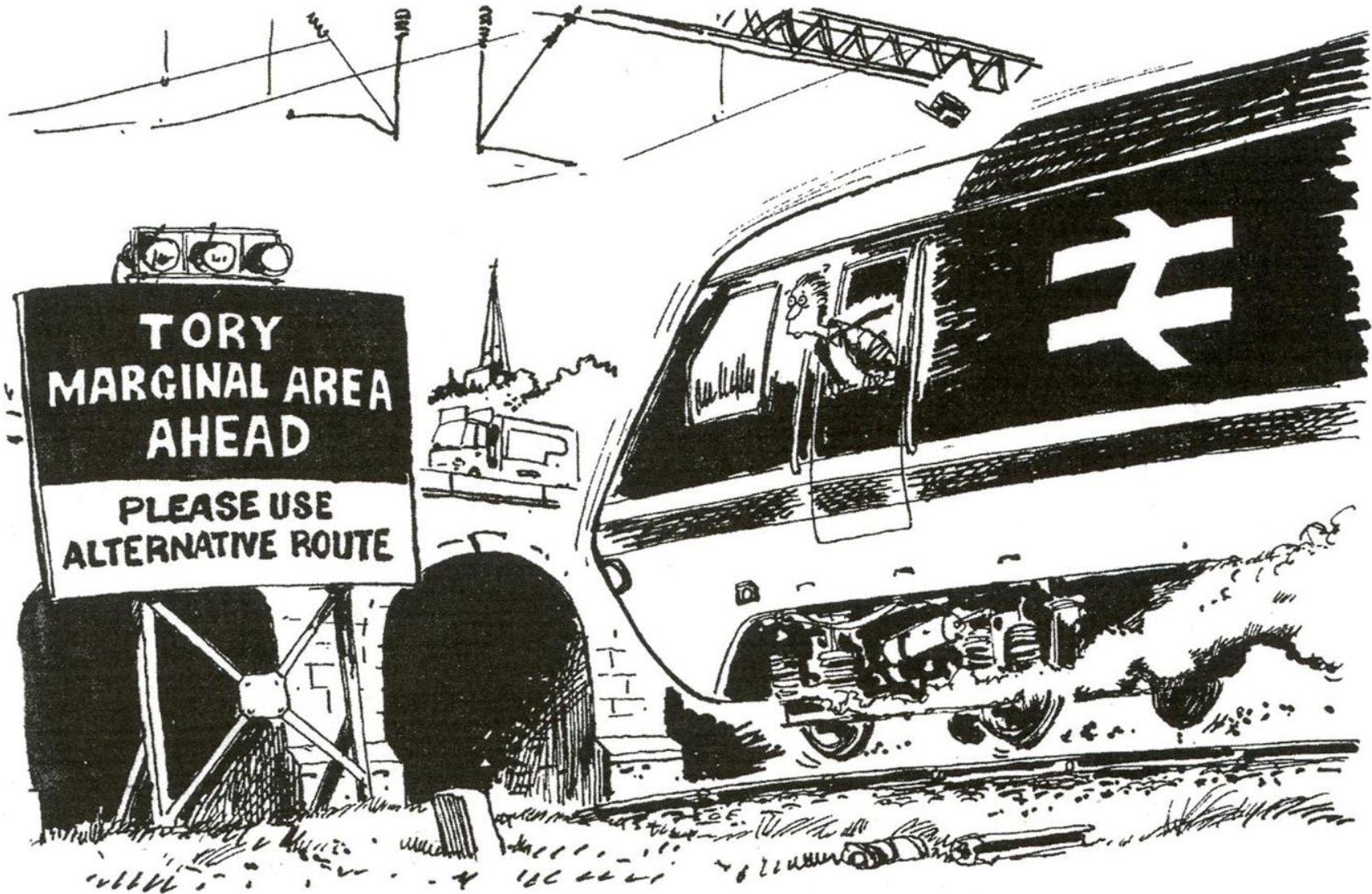
Covent Garden

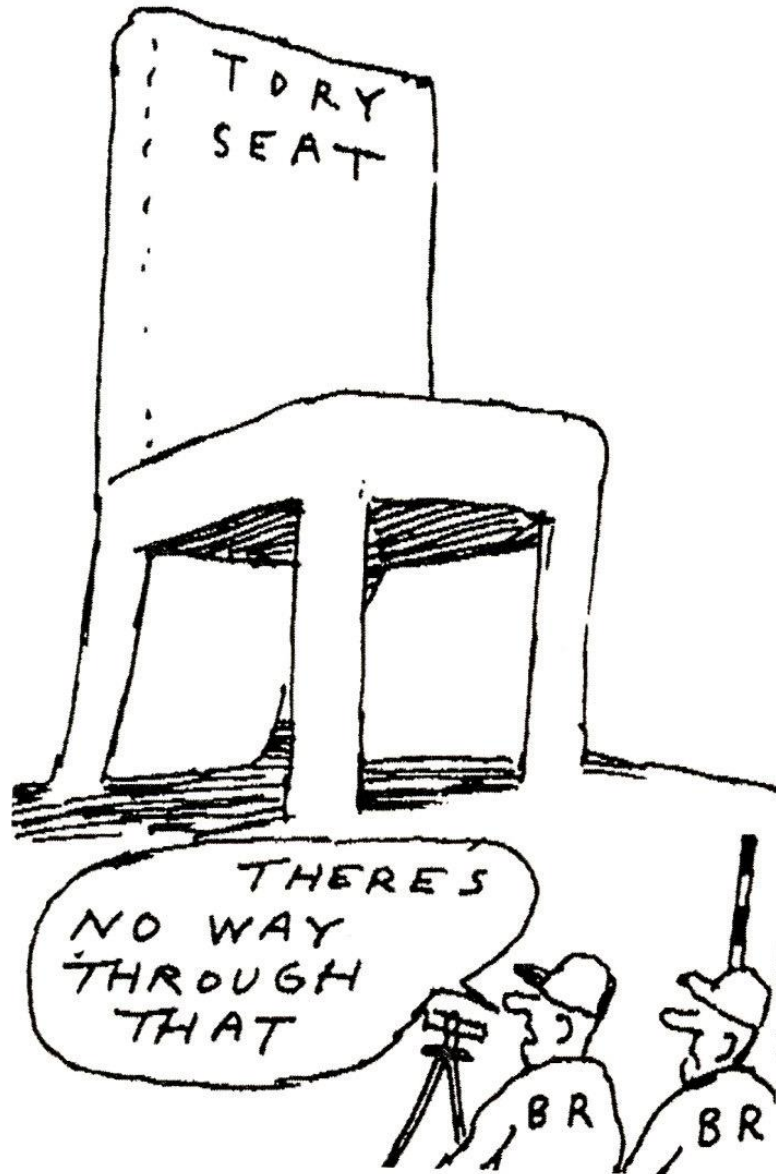
Leicester Square











Timetable for change

- 2004** Barlow train shed closed (12th April)
New eastern section of flat roof extension complete.
Midland Mainline & north bound Thameslink move .
Southbound Thameslink terminates at King's Cross.
- 2006** Midland Mainline moves to final home under
western section of flat roof extension. (14th July)
- 2007** Station opened by Queen (6th November)
Start of Eurostar via HS1 (14th November)
Thameslink through services start via low level
Platforms. King's Cross Thameslink closed (9th December)
- 2009** HS1 domestic services start to Medway towns & East Kent

Redeveloped Station















St Pancras
INTERNATIONAL PL

St Pancras
INTERNATIONAL PL





St Pancras INTERNATIONAL

The image shows the exterior of St Pancras International railway station. The building is constructed of red brick with prominent Gothic-style arches. A large glass canopy covers the entrance area. The text 'St Pancras INTERNATIONAL' is mounted on the brick wall above the canopy. Several people are visible walking on the sidewalk in front of the station, and a tall pole stands in the foreground.

St Pancras INTERNATIONAL













TREYN

Check-in

TRAVEL

Check-in

Check-in

Check-in

Check-in

Check-in

Check-in

Check-in







Plots 1-4: Class Midlands Trains
Eurostar and Taxis →
Coaches, parking
Luggage and Station Reception

St Pancras

The Children's War
and the...

← Southeastern
First Capital Connect
Toilets and luggage
Underground

chop'd

topo

ers

Isle Flowers

2

dyson



FOYLES





















Departures

Time Destination Plat Expected

Welcome
to
St. Pancras International
Station

14:24:38

12
Platform
highspeed

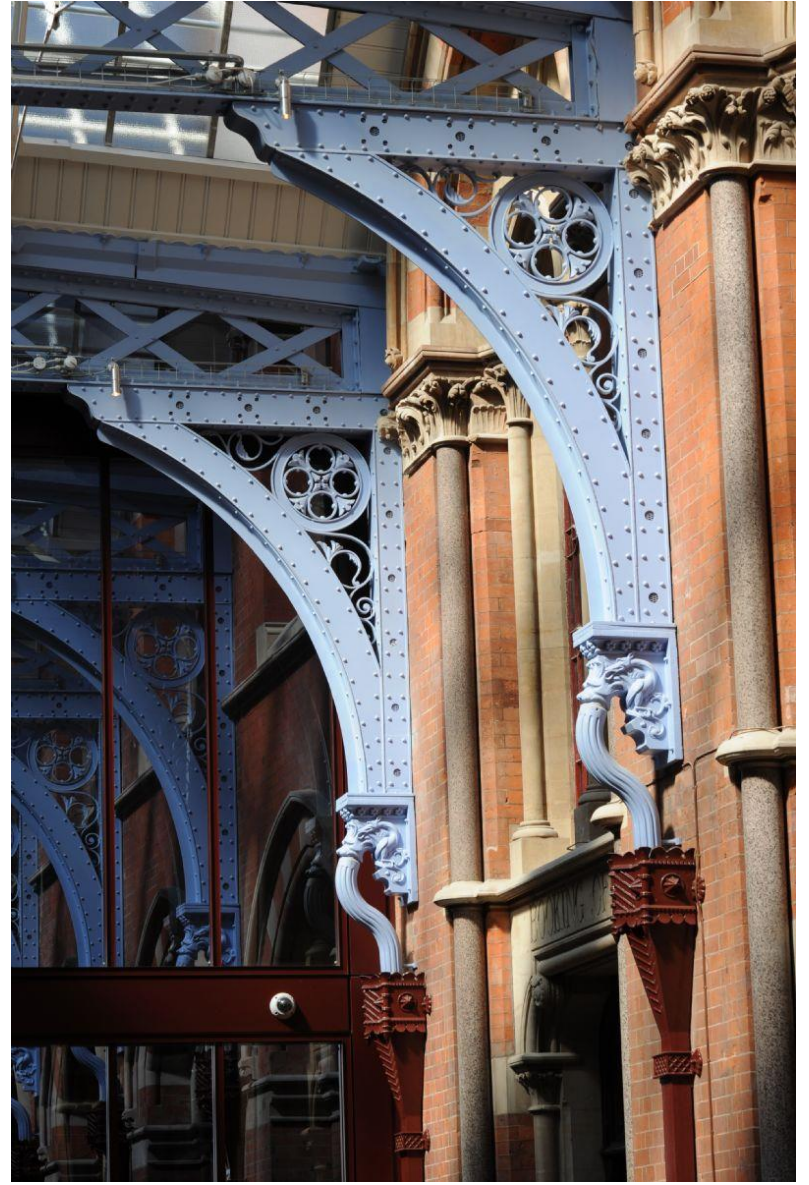








Redeveloped Hotel



























ESTD 1873

ST PAULS

RENAISSANCE HOTEL

LONDON













BOOKING OFFICE













Redeveloped Apartments



St Pancras Chambers

66 LUXURY APARTMENTS
1 UNIQUE £10 MILLION PENTHOUSE
www.stpancraschambers.com

ST PANCRAS CHAMBERS











